

GRAND  
CHAMPION

FEMALE

SUPER NATIONAL  
SHORT HORSE SHOW



CATES  
Farm

## STAR SEARCH XXIII SALE

SATURDAY, AUGUST 30, 2025 | NEW TIME ... 11:30 A.M. E.S.T. | at the farm | Modoc,  
IN



# Reserve Grand Champion

PUREBRED

CF ROSEBUD 3120  
Congratulations Skyler Ward



# Reserve Grand Champion

SHORTHORNPLUS

CF LADY CRYSTAL 41  
Congratulations Carter Wickard



# Fifth Overall Champion

SHORTHORNPLUS  
CF MONA LISA 484  
Congratulations Grady McGrew



# Grand Champion

CF LV MARGIE 430  
Congratulations Reagan James

E.D.G.E.







# Grand Champion R&O Bull

SHORTHORNPLUS  
CF PC WOOLSWORTH  
Congratulations Piper Cates

34 HEAD EXHIBITED  
AT THE 2025 NATIONAL  
JUNIOR SHORTHORN  
SHOW

- 21 Class Winners
- 16 top 3 Division Winners
- 7 Second in Class Placings

# Grand Champion R&O

SHORTHORNPLUS  
CF MARGIE 3140  
Congratulations Piper Cates



# Reserve Grand Champion R&O

SHORTHORNPLUS  
CF MARGIE 3140  
Congratulations Piper Cates



CF DREAM ONLY 485  
Reserve Division V Shorthorn,  
congratulations Weston Ward



CF MONA LISA 4124  
Reserve Division III Shorthorn,  
congratulations Smananth VanVorhis



CF MONA LISA PAYS 445  
Division VII Champion Shorthorn,  
congratulations Alyssa Meier



CF MONA LISA 4136  
Third Division III Shorthorn,  
congratulations Adison Ward



CF CHERRI 444  
Division Champion  
ShorthornPlus,  
congratulations  
Samantha VanVorhis



CF MONA LISA 440  
Champion Div VII ShorthornPlus,  
congratulations Gage Farrar

CF MAX ROSA 450  
Reserve Division VI  
ShorthornPlus,  
congratulation  
Mallory Inskeep



CF PC MISSING MIRAGE 474M  
Third Division VI Shorthorn,  
congratulation Karter Kornegay



CF ROSEBUD 3125  
Reserve Division Champion Shorthorn,  
congratulations Audrey Robertson



# SATURDAY, AUGUST 30, 2025

NEW TIME >>> 11:30 AM EST | at the farm | Modoc, Indiana

Entrance to parking is located at the intersection of US 36 and Indian Trail Road. It is 200 yards west of sale site.

## SCHEDULE OF EVENTS

### FRIDAY, AUGUST 29TH

6:00 pm View the cattle and enjoy a meal  
& fellowship with the Cates families

RC Cattle Open House  
[www.SCONlinesales.com](http://www.SCONlinesales.com)  
Cattle available Friday - Sunday

Smith Family Farms Cattlemen's Cut  
Open House - Cattle available Friday - Sunday

Cornerstone Farms Open House - Friday -  
Sunday. Sale day is September 2nd on  
[www.sconlinesales.com](http://www.sconlinesales.com)

### SATURDAY, AUGUST 30TH

11:30 am Cates Farms Star Search XXIII  
Shorthorn Production Sale

Lunch will be provided by Graze On Catering

4:00 pm Smith Family Farms Cattlemen's Cut  
Open House - Cattle available Friday - Sunday  
Sale day is September 8th on  
[www.amsonline.com](http://www.amsonline.com)

6:30 pm Indiana Fall Classic Sale

RC Cattle Open House  
[www.SCONlinesales.com](http://www.SCONlinesales.com)  
Cattle available Friday - Sunday



**WATCH & BID  
LIVE ONLINE**  
CCI.LIVE

## SALE DAY PHONES

Brian 765.969.0373  
Cortney 410.707.0267

## SALE ACCOMMODATIONS

Randolph Inn & Suites  
765.584.8281 Winchester, IN

Holiday Inn  
765.488.1975 Richmond, IN

Hampton Inn & Suites  
765.966.5200 Richmond, IN

## AUCTIONEER

Cody Lowderman 309.313.2171

## SALE MANAGERS

Aegerter Marketing Services, Inc.  
Jeff K. Aegerter 402.641.4696  
[jeff.aegerter@gmail.com](mailto:jeff.aegerter@gmail.com)  
[www.aegertermarketing.com](http://www.aegertermarketing.com)

Cagwin Cattle Services, LLC.,  
Don Cagwin, 217.341.7552  
Cindy Cagwin-Johnston, 217.370.6034  
[cagwincattle@casscomm.com](mailto:cagwincattle@casscomm.com)

Sears Marketing Services  
Alan K. Sears 970.396.7521 or 970.454.3986  
[alan.sears@aksears.com](mailto:alan.sears@aksears.com)  
[searsmarketingservices.com](http://searsmarketingservices.com)

## LIVESTOCK REPRESENTATIVES

Kent Jaecke, Special Representative, 405.408.2440

Darryl Rahn, *Shorthorn County*, 217.473.1124

Montie Soules, ASA Executive Secretary/Treasurer  
918.645.4322

Stuart Wilson, Sale Consultant, 217.454.9355

Scott Trennepohl, Sale Consultant, 765.620.1700

Jason Smith, Sale Consultant, 256.338.0023

Jeremey Hagg, Sale Consultant, 406.833.0117

Brent Elam, Sale Consultant, 615.573.5881

Colt Keffer, Sale Consultant, 765.376.8784

## INSURANCE

Cindy Cagwin-Johnston, 217.370.6034

## THANK YOU

Thank you to Tanner Cates, Kyle & Lauren Shoufler,  
Ryan Holaway, Jacob Bergman, Xander Robinson,  
Kaylee Eaton, Maggie Todd, and Dillon  
Doublehead for making our cattle on sale day look  
great. Photos taken by Cortney Cates, Kyle Shoufler  
and Cindy Cagwin-Johnston.



Tyler: 765.576.0035 | Cortney: 410.707.0267  
Kyle & Lauren Shoufler: 317.650.7999 | Tanner Cates | Jacob Bergman  
Brian & Angie: 765.969.0373 | Randy & Janet  
[www.catesfarms.com](http://www.catesfarms.com)



Cortney Hill-Dukehart Cates: 410.707.0267  
Tyler Cates: 765.576.0035  
Kyle & Lauren Shoufler: 317.650.7999  
Bob Hill & Marlene Dukehart

7893 South Indian Trail, Modoc, IN 47358

Like us on ...







*Shorthorn Plus*



Champion ShorthornPlus Female, '24  
Cattlemen's Congress Open & Jr Show  
~ Shown by Josie Beiser



Reserve Champion  
ShorthornPlus Female,  
'25 NJSS  
~ Shown by Carter  
Wickard



Reserve Champion ShorthornPlus Female,  
'25 Cattlemen's Congress Jr Show  
~ Shown by Samantha VanVorhis



Champion Female, '24 NJSS, NAILE Jr Show & Cattlemen's Congress Jr & Open Shows  
~ Shown by Carter Wickard



Champion Female, '24 NAILE Open Show & Reserve Champion,  
'25 Cattlemen's Congress Open Show  
~ Shown by Miller Smith



Reserve Champion Female, '25 NJSS  
~ Shown by Skyler Ward



Champion Female, '24  
American Royal & FWSS  
~ Shown by Reid Hanies



*Shorthorn*



*Angus*

Reserve Division V  
Champion, '25 NJAS  
~ Shown by  
Mercedes Ferree



Division II Champion, '25 NJAS  
~ Shown by Mercedes Ferree



Supreme Champion Female,  
'24 Cattlemen's Congress Jr Show  
~ Shown by Samantha VanVorhis



# The Mona Lisa Family



## 1A CF PC MONA LISA SMILE 51 RK X ET

Heifer | Polled | Roan | 01.01.2025 | 51 | \*x4395867

SULL RED KNIGHT 2030 ET  
CF SOLUTION X ET  
K-KIM MONA LISA 10T ET  
FREE K-KIM HOT COMMODITY  
CF CSF MONA LISA SMILE 997 HC X ET  
CF V8 MONA LISA SMILE 526

BEPD 1.9  
WEPD 51  
YEPD 71  
MEPD 15  
SBMI 122.01  
\$CPI 114.56

There have been 44 total lot one females in the Cates Farms sales over the years. So many of those cattle have gone on to achieve great things and even became breed changers. We feel this female has those capabilities and holds the coveted "Lot 1" spot proudly. This female is so picturesque from the side but is also incredibly three dimensional in her volume. I'm truly excited for what this female can do and can't wait to show her to you.

Retaining 50% ownership after show career.



CF V8 MONA LISA SMILES 526 ...  
Granddam of Lot 1's.



CF PC MONA LISA 350 ...  
National Champion Shorthorn Female,  
2024 NAILE shown by Miller Smith and  
granddaughter of 526.



CF MONA LISA 382 ...  
National Champion ShorthornPlus Female,  
2025 Cattlemen's Congress, shown by Jozie  
Beiser and granddaughter of 526.



# The Mona Lisa Family



**1B** CF PC MONA LISA SMILE 52 PRIMO ET  
Heifer | Polled | BWM | 01.01.2025 | 52 | \*ar4395868

BEPD 1.6 WEPD 57 YEPD 83 MEPD 14 \$BMI 114.83 \$CPI 136.27

**1C** CF PC MONA LISA SMILE 569 PRIMO ET  
Heifer | Polled | BWM | 03.30.2025 | 569 | \*xar4395885

COLBURN PRIMO

DAMERON FIRST CLASS  
SILVEIRAS SARAS DREAM 1339

CF CSF MONA LISA SMILE 997 HC X ET  
CF V8 MONA LISA SMILE 526

BEPD 1.6  
WEPD 57  
YEPD 83  
MEPD 14  
\$BMI 114.83  
\$CPI 136.27

LOT 1B ... This heifer is a Bred & Owned for Piper, and I came really close to keeping her. We are trying our very best to let her enjoy showing, but at the same time, this wonderful business is also our family's only source of income. When we clipped and pictured this one, I knew she had to be included in the sale if we want to continue offering our very best. This female's flawless structural design and maternal, classy look should help her reach great accolades for her lucky new owner.

LOT 1C ... This younger sister has the same maternal, feminine look and the same flawless structural build, with just a little splash of color. Both look like they are going to be nice-haired.



# The Mona Lisa Family



## 2

### CF MONA LISA 547 OM X ET

Heifer | Polled | RWM | 03.01.2025 | 547 | \*x4395880

TRN OMAHA 79

FREE K-KIM HOT COMMODITY  
GCC TURNERS MARGIE 542 E ET  
SULL RED REWARD 9321  
SULL MONA LISA REWARD ET  
CYT TIAWANA 864U ET

BEPD	4.1
WEPD	43
YEPD	61
MEPD	25
\$BMI	104.9
\$CPI	89.08

This has really turned out to be a great and proven mating, with heifers selling to the Inskeep, McGrew, and Kitchel families and being campaigned successfully. We all like this one quite a bit. She offers the extra stoutness and dimension sought after in today's industry, but does it with balance, grace, and a tremendous structural build.



## 2A

### CF PC MONA LISA 453 OM X ET

Bred | Polled | Red | 03.02.2024 | 452 | \*x4388469

TRN OMAHA 79

FREE K-KIM HOT COMMODITY  
GCC TURNERS MARGIE 542 E ET  
SULL RED REWARD 9321  
SULL MONA LISA REWARD ET  
CYT TIAWANA 864U ET

BEPD	4.1
WEPD	43
YEPD	61
MEPD	25
\$BMI	104.90
\$CPI	88.55

Bred to JSF Heritage 8L; due February 19, 2026.

This female looks like she will raise one with the big pieces and extras she possesses. She is freak-necked and huge-hipped with great bone and hair. Her trendy look, along with the cow power backed by her mother, makes her a good bet to be a money maker.



CF V8 MONA LISA 935 ... '20 American Royal Champion Female; '20 NWSS, Junior Show Reserve Grand Champion Female; and Division Champion at NAILE, NWSS & NJSS, Shown by Miller Smith



CF MONA LISA 0121 ... '22 NAILE & Cattlemen's Congress Division Champion and '22 NJSS Third Overall Champion Female, Shown by Carter Meyer



CF MONA LISA 148 ... '22 NJSS Reserve Grand Champion Female and Keystone Champion Shorthorn Female, Shown by Keagan McGrew



# The Mona Lisa Family



**3A**



**3B**

**3A**

## CF MONA LISA 568 RK X ET

Heifer | Polled | Roan | 03.30.2025 | 568 | \*x4395884

BEPD 2.4 WEPD 53 YEPD 79 MEPD 118 \$BMI 108.8 \$CPI 100.92

**3B**

## CF MONA LISA 568 RK X ET

Heifer | Polled | Roan | 04.14.2025 | 580 | \*x4395890

SULL RED KNIGHT 2030 ET  
SULL MONA LISA REWARD ET  
CF SOLUTION X ET  
K-KIM MONA LISA 10T ET  
SULL RED REWARD 9321  
CYT TIAWANA 864U ET

BEPD 2.4  
WEPD 53  
YEPD 79  
MEPD 18  
\$BMI 108.8  
\$CPI 100.92

This is a new mating for 3289, but one we certainly feel was a home run. Both of these females are great-colored and good-haired. Both have a tremendous look of quality from the side but also offer some muscle and punch from behind. These two females exemplify what we are trying to produce in order to make for a great and successful year of showing for dedicated young families. These two will both be very popular.



CF V8 MONA LISA REWARD 780 ...  
'18 NJSS Grand Champion Female,  
Shown by Miller Smith

## CF MONA LISA 2117

... '23 NJSS Fifth  
Overall Champion  
Female, Shown by  
Audrey Robinson



CF V8 MONA LISA REWARD 782 ...  
'18 NAILE Reserve Grand Champion Female, '18 NAILE  
and '19 NWSS Jr & Open Show & FWSS Grand  
Champion Female, Shown by Ryan Wickard





# The Mona Lisa Family



**CF MONA LISA PAYS 445 ...**  
Division Champion, NJSS, NAILE & FWSS,  
shown by Alyssa Meir

**4**

## CF MONA LISA 525 PW X ET

Heifer | Polled | Red | 02.08.2025 | 525 | \*x4395873

CF PAYWEIGHT X ET

BYLAND FLASH 9U106  
SULL CRYSTAL'S LADY 6265D ET

SULL MONA LISA REWARD ET

SULL RED REWARD 9321  
CYT TIAWANA 864U ET

**BEPD** 3.4  
**WEPD** 63  
**YEPD** 91  
**MEPD** 25  
**SBMI** 139.41  
**SCPI** 132.57

This female exemplifies why we love the Payweight cattle. She is so broody and functional in her design and truly correct in her structure. She has the balance and structure to compete in the show ring, but even the judges will tell you this one screams COW!



**5**

## CF MONA LISA 572 DM X ET

Heifer | Polled | RWN | 04.03.2025 | 572 | \*x4395886

SULL DREAM MAKER 9141G ET

SULL RED KNIGHT 2030 ET  
SULL DREAM ON 5158 ET

SULL MONA LISA REWARD ET

SULL RED REWARD 9321  
CYT TIAWANA 864U ET

**BEPD** 1.9  
**WEPD** 49  
**YEPD** 72  
**MEPD** 23  
**SBMI** 113.87  
**SCPI** 105.41

This is quickly becoming one of 3289's most potent mating's. We were very proud of the two full sisters to her that we took to Junior Nationals. One was reserve division for Samantha Vanvorhis, and the other was our top-selling female in the Spring sale—greatly admired by those who saw her and now owned by Kyson Gana. This young April sister has all the prerequisites to become a successful show heifer and tremendous donor cow.v



# The Mona Lisa Family

## 5A

### CF MONA LISA 43 DM X ET

Bred | Polled | RWM | 01.04.2024 | 43 | \*x4388468

SULL DREAM MAKER 9141G ET	SULL RED KNIGHT 2030 ET	BEPD 1.9
	SULL DREAM ON 5158 ET	WEPD 49
SULL MONA LISA REWARD ET	SULL RED REWARD 9321	YEPD 72
	CYT TIAWANA 864U ET	MEPD 23
		\$BMI 113.87
		\$CPI 105.41

Bred to JSF Heritage 8L; due January 17, 2026.

This is one of those bred's that, when she hits the picture pen, you realize you maybe should have sold her a year earlier as a show heifer. The positive is she still looks the part and is bred to be a money maker that will produce elite cattle for her new owner.



## DONATION LOT

## 5B

### CF MONA LISA 451 DM X ET

Bred | Polled | Roan | 03.01.2024 | 451 | \*x4388467

SULL DREAM MAKER 9141G ET	SULL RED KNIGHT 2030 ET	BEPD 1.9
	SULL DREAM ON 5158 ET	WEPD 49
SULL MONA LISA REWARD ET	SULL RED REWARD 9321	YEPD 72
	CYT TIAWANA 864U ET	MEPD 23
		\$BMI 113.87
		\$CPI 105.41

Bred to JSF Heritage 8L; due April 2, 2026.

This female is bred as well as we can make one. Her dam is our best and all-time greatest revenue-earning female, and her sire is one of the breed's most sought-after bulls. We proudly donate 100% of what this female brings to support the funding of our great breed's greatest event.



## GENERAL INFORMATION

**Feeding & Showing Terms:** We pride ourselves in the professional way we exhibit your purchases. Here, at Cates Farms, we employ some of the best fitters in the business at both the farm and the shows. We spare no expenses to exhibit your cattle to ensure your success. The charges below are not designed for us to make money, rather to insure we can continue to offer the best service to you. Each animal that will be located at Cates Farms show barn will be charged \$25/day. Each animal will be charged \$250/day while attending shows with Cates Farms crew. This will cover all expenses while at shows. All animals must be insured while in our care/possession. Any veterinary expense above routine will be owners obligation. All accounts will be billed monthly.

**Breeding Update/Calving Information:** There will be added information available at the sale site that will list any additions to the catalog information as to new calves born and new breeding information that will occur after the printing of this catalog.

**Half Interest Females:** The owner will own 100% of the animal. Cates Farms will get 1/2 of the embryos from each flush. Semen on all of our bulls will be available. Cost will be split.

**Breeding Guarantee:** All cattle sell under the Standard Breeding Guarantee recommended by the American Shorthorn Association. An exception would be through mishandling either obesity or under nourishment and illegal practices associated with showing the female.

**Registration & Transfer:** All animals sell with completed pedigrees or applications for registration.



# *The Mona Lisa Family*



6A



6B



6C



**CF MONA LISA 148 ...**

Full sib to the Lot 6's and Grand Champion Female,  
2022 KILE & Reserve Grand Champion Female,  
2022 NJSS, shown by Keegan McGrew



# The Mona Lisa Family



6D



6E

6A

## CF MONA LISA 534 LL X ET

Heifer | Polled | RWM | 02.16.2025 | 534 | \*x4395875  
BEPD 1.9 WEPD 40 YEPD 54 MEPD 118 \$BMI 111.61 \$CPI 114.4

6B

## CF MONA LISA 537 LL ET

Heifer | Horned | Roan | 02.20.2025 | 537 | \*4395877  
BEPD 1.9 WEPD 40 YEPD 54 MEPD 118 \$BMI 111.61 \$CPI 114.4

6C

## CF MONA LISA 555 LL ET

Heifer | Horned | RWM | 03.08.2025 | 555 | \*4395882  
BEPD 1.9 WEPD 40 YEPD 54 MEPD 118 \$BMI 111.61 \$CPI 114.4

6D

## CF MONA LISA 443 LL X ET

Bred | Polled | RWM | 02.25.2024 | 443 | \*x4388466  
BEPD 1.9 WEPD 40 YEPD 54 MEPD 118 \$BMI 111.61 \$CPI 114.4

6E

## CF MONA LISA 453 LL X ET

Bred | Polled | RWM | 03.03.2024 | 453 | \*x4388471

CSF LONG LOOK HC 706 ET

FREE K-KIM HOT COMMODITY

CF MARGIE 119 SOL X ET

SULL MONA LISA REWARD ET

SULL RED REWARD 9321

CYT TIAWANA 864U ET

BEPD 1.9  
WEPD 40  
YEPD 54  
MEPD 118  
\$BMI 111.61  
\$CPI 114.4

LOT 6A ... This is a really nice set of full sisters. A full sister to these females was Reserve Grand Champion Female at the Junior Nationals for Keagan McGrew. This female is extremely bold-made and powerfully built. She is dark cherry red and seems like she is going to have really good hair.

LOT 6B ... This full sister is big-time cowy in her design and reads with plenty of depth and volume.

LOT 6C ... This slightly younger sister is possibly the most complete and fault-free of the trio. It will be fun to see how everyone ranks these three.

LOT 6D ... Bred to JSF Heritage 8L; due February 3, 2026.

LOT 6E ... Bred to JSF Heritage 8L; due February 3, 2026.

If you have heard the expression "peas in a pod," it is very fitting here with these two full sisters. Both offer so much width and dimension. They are both great-patterned, attractive cattle that have a very modern look. They are built alike, colored alike, and even bred to the same bull due the same day.

6F

## 4 SEXED HEIFER IVF EMBRYOS

Selling one package of Four SEXED Heifer IVF Embryos.

CSF LONG LOOK HC 706 ET X SULL MONA LISA REWARD ET

This has been, and will continue to be, a very successful mating for us. This mating does not miss, as you can see. It has produced a Junior National Reserve Grand Champion as well as three other females that have been division winners at the national level.



# The Mona Lisa Family



7A



7B

7A

## CF MONA LISA 480 UH X ET

Bred | Polled | Roan | 04.14.2024 | 480 | \*x4388473

BEPD 2.5 WEPD 43 YEPD 62 MEPD 20 \$BMI 108.17 \$CPI 103.30

7B

## CF MONA LISA 486 UH X ET

Bred | Polled | Red | 04.20.2024 | 486 | \*x4388475

CF S/F UPPER HAND X ET LITTLE CEDAR AVIATOR 503X

CF HHF MARGIE 2106 HC X ET

SULL MONA LISA REWARD SULL RED REWARD 9321

CYT TIAWANA 864U ET

BEPD 2.5  
WEPD 43  
YEPD 62  
MEPD 30  
\$BMI 108.17  
\$CPI 103.30

LOT 7A ... Bred to JSF Heritage 8L; due February 3, 2026. There have been three full sisters to these bred females that have been really successful in the show ring. This beautiful female looks like she could have used a shot in the ring as well. She is very well-balanced and has great body shape.

LOT 7B ... Bred to JSF Heritage 8L; due March 27, 2026. This lighter roan is the biggest-boned and stoutest-featured of the three. She is extremely attractive fronted as well.

7C

## 4 SEXED HEIFER IVF EMBRYOS

Selling one package of Four SEXED Heifer IVF Embryos.

CF S/F UPPER HAND X ET X SULL MONA LISA REWARD

This has been a very proven mating that has produced at least three division winners at the national level. This mating combines the two most dominant cow families in Cates history: the Margies and Mona Lisa's.



### CF MONA LISA 336 ...

Full sib to the Lot 7's, Reserve Division Champion, 2023 NAILE, shown by Skyler Ward.



### CF MONA LISA 2112 ...

Full sib to the Lot 7's, Reserve Division Champion, 2023 NAILE, shown by Makayla Sugg.



### CF MONA LISA 2101 ...

Full sib to the Lot 7's, Division Champion, 2024 Cattlemen's Congress, shown by Miller Smith.



# The Mona Lisa Family



8A



8B



8C



**CF MONA LISA 484 ...**  
Full sib to the Lot 8's and Fifth Overall  
ShorthornPlus Female, 2025 NJSS, shown by  
Grady McGrew

8A

## CF MONA LISA 535 24K X ET

Heifer | Polled | Black | 02.16.2025 | 535 | \*xar4395876

BEPD 3.2 WEPD 64 YEPD 96 MEPD 24 \$BMI 117.23 \$CPI 115.42

8B

## CF MONA LISA 573 24K X ET

Heifer | Polled | Black | 04.04.2025 | 573 | \*ar4395887

BEPD 3.2 WEPD 64 YEPD 96 MEPD 24 \$BMI 117.23 \$CPI 115.42

8C

## CF MONA LISA 583 24K X ET

Heifer | Polled | BWM | 04.16.2025 | 583 | \*xar4395889

SCC SCH 24 KARAT 838  
SCC TRADITION OF 24  
FCF PROVEN QUEEN 419  
SULL RED REWARD 9321  
SULL MONA LISA REWARD ET  
CYT TIAWANA 864U ET

BEPD 3.2  
WEPD 64  
YEPD 96  
MEPD 24  
\$BMI 117.23  
\$CPI 115.42

8D

## 4 SEXED HEIFER IVF EMBRYOS

Selling one package of Four SEXED HEIFER IVF Embryos.

SCC SCH 24 KARAT 838 X SULL MONA LISA REWARD ET

The first female offered out of this mating was just named Fifth Overall Shorthorn Plus Female at the Junior Nationals for Grady McGrew. These three sisters are among the best we produced this year. They all have a tremendous showing look, but what probably makes them stand out the most is how stout-featured and powerful they are. They should compete well at jackpots as well as national shows.

As evidenced by the three heifer calves offered in this sale, this is—and will continue to be—a go-to mating here at Cates Farms.



# The Rose/ Mirage/ Ruby Family



9

## SULL ROSEBUD 7144E ET

Bred | Polled | Red | 01.20.2017 | 7144E | \*x4273727

SULL RED REWARD 9321 TEGM RED ADVANTAGE 100T  
MCV MARGIE MILLION 503Q  
SULL RED TRAVELER 2405Z E ET SULL TRAVELER 9807 ET  
HD RUBY 903

BEPD 2.4  
WEPD 50  
YEPD 76  
MEPD 23  
\$BMI 110.64  
\$CPI 119.11

Bred to CF Pay Weight; due December 27, 2025.

Not often is a big-time, proven donor cow in the prime of her life offered for sale. Rosebud has been a can't-miss female and is coming off a pretty impressive showing at this year's Junior Nationals. Thanks to her being an absolute monster egg producer, we are able to feature her this year. Rosebud has the extra frame size and growth to mate so well with today's more moderate bulls. She excels in her feet and legs and has a tremendous udder when she calves. This female can be a program-changer that could take your operation to a new level. She averages 16.5 freezable eggs per IVF flush. Selling full interest and possession

9A

## 4 SEXED HEIFER IVF EMBRYOS

Selling one package of Four SEXED Heifer IVF Embryos.

CF EVOLUTION X SULL ROSEBUD 7144E ET

Full sibs to an extremely proven mating here that just produced the Reserve Grand Champion Female at this summer's Junior Nationals.

9B

## 4 SEXED HEIFER IVF EMBRYOS

Selling one package of Four SEXED Heifer IVF Embryos.

CF IN DEMAND X SULL ROSEBUD 7144E ET

In Demand looks absolutely incredible, and we feel he could be our most popular sire produced in quite some time. This is a great opportunity to have some of his first offspring out of a very proven donor.



CF ROSEBUD 3120 ...  
Reserve Grand Champion  
Female, 2025 NJSS,  
shown by Skylar Ward



CF ROSEBUD 3125 ...  
Reserve Division Champion,  
2025 NJSS, shown by  
Audrey Robertson



CF ROSEBUD 2126 ...  
Reserve Division, 2024  
Cattlemen's Congress,  
shown by Carter Meyer



CF ROSEBUD ...  
Champion Shorthorn Female,  
2023 Indiana State Fair,  
shown by the Jester Family



CF ROSEBUD 3126 ...  
Many time Champion  
Shorthorn Female,  
shown by the Addison Ward



# The Rose/ Mirage/ Ruby Family



10



**CF PC MISSING MIRAGE 474 ...**  
Division Champion, NAILE; Reserve Division  
Champion, FWSS, and Third Overall Division,  
NJSS, shown by Carter Kornegy



10A

10

## SS MISSING MIRAGE 117 ET

Bred | Polled | Roan | 02.18.2021 | 117 | \*x4330808

SULL PROPEL 7187E ET	SULL RGLC LEGACY 525 ET HD RUBY 903	BEPD 3.1
		WEPD 49
CYT MISSING MIRAGE 2120 ET	CYT MAXIM 9202 ET SULL MIRAGE FOREVER EVER ET	YEPD 7
		MEPD 20
		\$BMI 96.49
		\$CPI 97.17

Bred to CF In Demand; due February 2, 2026.

Retaining 50% embryo interest.

This outstanding female is on a roll. Her first calf was a Hot Commodity bred heifer purchased by the Bishell family last year for \$8,250. Her second calf was the \$60,000 Payweight female that sold to Carter Kornegy and has been a consistent winner nationally. We feel this year's white Payweight heifer is one of the very best we will offer. She has easily bred AI every year and three times to sexed semen. We believe she has darn well earned her chance to be a big-time donor cow. Here is your chance to be our partner in a female that we feel will become a big part of our program. Her mating to In Demand excites us as well.

10A

## CF PC MISSING MIRAGE 544 PW X

Heifer | Polled | White | 02.28.2025 | 544 | \*x4395879

CF PAYWEIGHT X ET	BYLAND FLASH 9U106 SULL CRYSTAL'S LADY 6265D ET	BEPD 3.4
		WEPD 65
SS MISSING MIRAGE 117 ET	SULL PROPEL 7187E ET CYT MISSING MIRAGE 2120 ET	YEPD 95
		MEPD 23
		\$BMI 134.33
		\$CPI 129.87

We feel this is a big-time female that puts together so many positives into a very complete package. She offers exceptional growth, performance, and volume on a sound, attractive skeleton. What we believe this heifer is capable of will be well worth the purple soap.



# The Rose/ Mirage/ Ruby Family



11A



11B



11C



**CF TRAVELING RUBY 394 ...**  
Grand Champion Shorthorn Female, 2024  
American Royal and FWSS, shown by Reed Hanes

**11A** **CF BOY TRAVELING RUBY 519 EV ET**  
Heifer | Horned | Roan | 01.31.2025 | 519 | \*4395870  
BEPD 2.0 WEPD 49 YEPD 73 MEPD 20 \$BMI 124.46 \$CPI 123.12

**11B** **CF TRAVELING RUBY 531 EV X ET**  
Heifer | Polled | Roan | 02.14.2025 | 531 | \*4395874  
BEPD 2.0 WEPD 49 YEPD 73 MEPD 20 \$BMI 124.46 \$CPI 123.12

**11C** **CF TRAVELING RUBY 590 X ET**  
Heifer | Polled | Roan | 04.24.2025 | 590 | \*4395891

CSF EVOLUTION HC	FREE K-KIM HOT COMMODITY	BEPD 2.0
	CF BOY CAROLINE 210 ET	WEPD 49
		YEPD 73
SULL TRAVELING RUBY ET	SULL TRAVELER 9807 ET	MEPD 20
	HD RUBY 903	\$BMI 124.46
		\$CPI 123.12

This has been a great mating not just for us but for many Shorthorn breeders across the country. A full sister was our top seller two years ago to Reed Hanes. That female went on to win both Kansas City and Ft. Worth. Another full sister was the Grand Champion Female the year before for Kolten Greenhorn. All three of these heifers are really good, but each is a little different. The A heifer is fairly green for her age right now but has big upside and so much future. She has the big pieces to grow into something special. The B heifer is the cow, as she is so maternal in her build and very sound at the ground. The C heifer is an absolute chunk. She is big-boned, thick-made, and hairy.



# The Rose/ Mirage/ Ruby Family

## 12

### RUBY'S AVIATOR ET

Bred | Polled | RWM | 01.01.2021 | 2113 | \*x4325112

LITTLE CEDAR AVIATOR 503X	WHR SONNY 8114	BEPD 3.4
	NPS ROSES RIDER 031 ET	WEPD 50
SULL TRAVELING RUBY ET	SULL TRAVELER 9807 ET	YEPD 78
	HD RUBY 903	MEPD 23
		\$BMI 97.7
		\$CPI 83.82

Bred to CF Pay Weight SEXED HEIFER semen; due September 12, 2025.

This is a really nice young female that should appeal to many, not just because of her pedigree but also her physical appearance. She is well-balanced, sound-made, and just about to reach her prime productive years. The Payweight heifer calf she is carrying should get you well on your way to a strong return on investment.



## 13

### CF ROSEMARY 957 BW X

Bred | Polled | Red | 03.12.2019 | 957 | \*x4289461

LEVELDALE BOARDWALK 530C	STUDER'S TAYLOR MADE 7Y	BEPD 0.8
	SULL PAYDAY 1507 ET	WEPD 47
CF ROSEMARY 565 PAY DAY	SULL REWARD MARY 3078 ET	YEPD 71
		MEPD 21
		\$BMI 112.27
		\$CPI 124.93

Bred to CF Pay Weight; due late September 2025.

This has been a very solid cow for us. She probably doesn't get noticed as much because she has been so consistent, and we have never had any issues with her. She has raised a calf every year, has had no feet or udder issues, and stays fat all the time. If all cattle were like her, this business would be easy.



## 13A

### CF ROSEMARY 436 PW X

Heifer | Polled | Red | 02.11.2024 | 436 | \*x4388465

CF PAYWEIGHT X ET	BYLAND FLASH 9U106	BEPD 1.4
	SULL CRYSTAL'S LADY 6265D ET	WEPD 62
CF ROSEMARY 957 BW X	LEVELDALE BOARDWALK 530C	YEPD 91
	CF ROSEMARY 565 PAY DAY	MEPD 24
		\$BMI 141.9
		\$CPI 145.94

If this is any indication of what these Payweight females are going to look like as cows, his success is going to go way past the show ring. She already looks like a brood cow. With her mother as proof, this is one I could recommend to anyone, no matter where you live or what avenue you are targeting. This one could raise a big-time herd bull.





# The Crystal/ Dream Lady/ Margie Family



**CF LADY CRYSTAL 160...**  
Reserve Division Champion,  
2021 NAILE, shown by  
Reed Schumaker



**CF LADY CRYSTAL 290...**  
Division Champion, 2024  
Cattlemen's Congress,  
shown by Mark Inskeep



**CF PAYWEIGHT...**  
Grand Champion Bull, 2022  
& 2023 Cattlemen's Congress



## 14 SULL CRYSTAL'S LADY 6265D ET

Bred | Polled | Red | 01.17.2016 | 6265D | \*x4249644

JSF MARQUIS 127X	EIONMOR MARQUIS 86G	BEPD 2.6
	JSF MARVEL 12U	WEPD 62
		YEPD 85
	WHR SONNY 8114	MEPD 28
SULL LADY CRYSTAL-434P-1 ET	AF MARGIES DREAM LADY 05 ET	\$BMI 146.87
		\$CPI 126.25

Bred to JSF Heritage 8L; due December 17, 2025.

This great female is none other than the dam of CF Pay Weight. This cow has done so much for our program with the progeny we have sold, as well as what she will do with the embryos and pregnancies we have coming. She offers so much versatility in the directions you can go with her. Her biggest compliment came when Dereck Jungles said she was maybe the best Shorthorn cow he had ever seen. I'd say he has seen a lot of them and looks at a lot of great ones every day.



## 15 CF/ATWF LADY CRYSTAL'S M411

Heifer | Horned | Roan | 12.01.2024 | 411 | \*x4390636

	LITTLE CEDAR AVIATOR 503X	BEPD 2.6
CF S/F UPPER HAND X ET	CF HHF MARGIE 2106 HC X ET	WEPD 54
		YEPD 78
	BLYAND FLASH 9U106	MEPD 22
CF LADY CRYSTAL 163 PW X ET	SULL CRYSTAL'S LADY 6265D ET	\$BMI 132.40
		\$CPI 125.60

This great female is a prime example of what these young future donor cows we sell are capable of. This female's mother was our top-selling cow for half interest in last year's sale to our great friends, the Wampler family. This is the heifer calf she was carrying. That female is bred back, and they are about to start flushing her. The Wampler family also purchased a future donor in a past sale that just produced the Reserve Grand Champion Plus Steer at this summer's Junior Nationals as well as Fifth Overall Champion at the 2025 Indiana State Fair. It is our privilege to offer this tremendous December show heifer prospect with them.



# The Crystal/ Dream Lady/ Margie Family



16

## CF HANES CRYSTAL LUCY 582 RK X ET

Heifer | Polled | Roan | 0416.2025 | 582 | \*x4395888

	CF SOLUTION X ET	BEPD 2.9
SULL RED KNIGHT 2030 ET	K-KIM MONA LISA 10T ET	WEPD 54
	LITTLE CEDAR AVIATOR 503X	YEPD 81
SULL CRYSTAL'S LUCY ET	SULL LADY CRYSTAL-434P-1 ET	MEPD 23
		SBMI 108.61
		SCPI 89.28

Retaining 50% embryo interest after show career.

What more can be said for this outstanding mating? The phrase "you can never have too much of a good thing" certainly applies here. This is a full sister to two of the winningest heifers we have ever produced, both for our long-time customers, the Wickard family. This young female has all the integral pieces to follow in those footsteps. She is very extended in her design, tremendously well-balanced, and as good on the move as any we will offer. She is one of my very favorites right now, and I believe she will change as much as any between now and the sale.

## CF CRYSTAL LUCY 384 ...

Grand Champion  
Female, 2025  
Cattlemen's Congress  
Open Show, shown  
by Carter Wickard



## CF CRYSTAL LUCY 230 ...

Grand Champion  
Female, 2024  
Cattlemen's Congress  
Open Show, shown  
by Carter Wickard



# The Crystal/ Dream Lady/ Margie Family



**17A CF LADY CRYSTAL 521 PRIMO X ET**  
 Heifer | Polled | Blue | 02.02.2025 | 522 | \*ar4395872  
 BEPD 3 WEPD 60 YEPD 92 MEPD 16 \$BMI 97.25 \$CPI 113.59

**17B CF LADY CRYSTAL 540 PRIMO X ET**  
 Heifer | Polled | Blue | 02.24.2025 | 540 | \*xar4395878

COLBURN PRIMO	DAMERON FIRST CLASS	<u>BEPD 3.0</u>
	SILVEIRAS SARAS DREAM 1339	<u>WEPD 60</u>
	WHR SONNY 8114	<u>YEPD 92</u>
SHERWOOD LADY CRYSTAL ET		<u>MEPD 16</u>
AF MARGIES DREAM LADY 05 ET		<u>\$BMI 97.25</u>
		<u>\$CPI 113.59</u>

This is one of the most consistent and dominant ShorthornPlus mating's the breed has ever seen. Just this past summer, this mating produced the Reserve Grand Female for Carter Wickard at Junior Nationals. These two females should be very competitive for some lucky juniors this upcoming show season.



**CF LADY CRYSTAL 41...** Reserve Champion ShorthornPlus Female, 2025 NJSS, shown by the Wickard Family

## ~ SERVICE SIRES ~



**CF PAYWEIGHT** \*s4329601  
 BW: 3.8 | WW: 82 | YW: 117 | MK: 27 | BMI: 172.67 | CPI: 163.58  
 Byland Flash 9U106 X SULL Crystal's Lady 6265D

**JSF HERITAGE 8L**  
 \*x4356371  
 BW: -0.6 | WW: 46 | YW: 61  
 | MK: 29 | BMI: 149.65  
 | CPI: 174.27  
 Saskvalley Tradition 106T  
 X JSF Gold Rose 85C



**JSF KANE CINCH 61H** \*x4313477  
 BW: 0.3 | WW: 53 | YW: 77 | MK: 24 | BMI: 128.78 | CPI: 154.90  
 Saskvalley Outlaw 173Z X KANE Red Reba 613E



**CF IN DEMAND** \*x4383407  
 BW: 4.2 | WW: 67 | YW: 96 |  
 MK: 2 | BMI: 139.12 | CPI: 136.54  
 CF Payweight X X Red Banana ET



# The Crystal/ Dream Lady/ Margie Family



**18A**



**CF DREAM ONLY 485 ...**  
Reserve Division Champion, 2025 NJSS,  
shown by Weston Ward



**18B**

**18A**

## CF DREAM ONLY 591 EV X ET

Heifer | Polled | RWM | 04.29.2025 | 592 | \*x4395892

BEPD 2.6 WEPD 49 YEPD 69 MEPD 27 \$BMI 132.15 \$CPI 123.91

**18B**

## CF DREAM ONLY 597 EV X ET

Heifer | Polled | Roan | 05.02.2025 | 597 | \*x4395894

CSF EVOLUTION HC

SULL DREAM ONLY 7188E

FREE K-KIM HOT COMMODITY

CF BOY CAROLINE 210 ET

SULL RIGHT DIRECTION ET

SS DREAM LADY 161 E

BEPD 2.6  
WEPD 49  
YEPD 69  
MEPD 27  
\$BMI 132.15  
\$CPI 123.91

This pair of full sisters is built for the big stage, following in the footsteps of Westin Ward's heifer that was reserve in her division at Junior Nationals. The A heifer is ultra-complete with a balanced, eye-catching design, while the B heifer brings tremendous body shape and depth for her age. Both have the quality and look to be big-time national contenders.



# The Crystal/ Dream Lady/ Margie Family



**CF KLS DREAM ON 221...** Grand Champion Female, 2022 NAILE & 2023 Cattlemen's Congress, shown by Houston Ferree

## 19A CF KLS DREAM ON 548 NL X ET

Heifer | Polled | Black | 03.02.2025 | 548 | \*xar4395881

CONLEY NO LIMIT

EXAR BLUE CHIP 1877B

SILVEIRAS S SIS SANDY 2355

SULL DREAM ON 5158 ET

SULL RIGHT DIRECTION ET

SS DREAM LADY 161 ET

BEPD	3.8
WEPD	72
YEPD	109
MEPD	24
\$BMI	116.37
\$CPI	99.02

This mating has been responsible for more National Champion Plus females in the past five years than any other. The A female, we feel, is one of our best. She is a big, growthy, high-volume female that reads very cow-like in her rib shape but is still elegant enough in her design. The B heifer is ultra-complete and very nice in her structural build as well. She has an easy-feeding look to her and should be competitive at an early age.



## 19B CF KLS DREAM ON 596 NL X ET

Heifer | Polled | BWB | 05.01.2025 | 596 | \*xar4395895

CONLEY NO LIMIT

EXAR BLUE CHIP 1877B

SILVEIRAS S SIS SANDY 2355

SULL RIGHT DIRECTION ET

SULL DREAM ONLY 7188E ET

SS DREAM LADY 161 ET

BEPD	3.5
WEPD	69
YEPD	101
MEPD	26
\$BMI	117.42
\$CPI	100.5

This mating has been responsible for more National Champion Plus females in the past five years than any other. The A female, we feel, is one of our best. She is a big, growthy, high-volume female that reads very cow-like in her rib shape but is still elegant enough in her design. The B heifer is ultra-complete and very nice in her structural build as well. She has an easy-feeding look to her and should be competitive at an early age.



# The Crystal/ Dream Lady/ Margie Family

## 20A CF PC DREAM LADY 57 UH X

Heifer | Polled | RWM | 01.12.2025 | 57 | 4395869

CF S/F UPPER HAND X ET	LITTLE CEDAR AVIATOR 503X	BEPD 3.3
	CF HHF MARGIE 2106 HC X ET	WEPD 46
CSF DREAM LADY 2151 HC ET	FREE K-KIM HOT COMMODITY	YEPD 64
	CF CSF DREAM LADY 78 AV X ET	MEPD 18
		\$BMI 116.15
		\$CPI 105.44

This very complete Upperhand daughter is one we have liked from an early age. She is exceptional in terms of her body shape and depth of rib. She is a fluid moving individual that has good slope to her shoulder and is very soft at the ground. This one seems to also have a very nice disposition at his point a may be suited for a younger showman.



## 20B CF DREAM LADY 44 CINCH X

Bred | Polled | Red | 01.04.2024 | 44 | \*x4388463

JSF KANE CINCH 61H	SASKVALLEY OUTLAW 173Z	BEPD 0.9
	KANE RED REBA 613E	WEPD 48
CSF DREAM LADY 2151 HC ET	FREE K-KIM HOT COMMODITY	YEPD 65
	CF CSF DREAM LADY 78 AV X ET	MEPD 22
		\$BMI 126.18
		\$CPI 136.85

Bred to JSF Heritage 8L; due January 16, 2026.

This extremely nice Cinch daughter is out of a full sister to the Dream Girl female that was Grand at OKC as a calf and Reserve as a yearling for Miller Smith. There is plenty of width and dimension to this female, and she is functional on her feet and legs. Her mating to Heritage screams maternal.



## 21 CF MARGIE 481 PW X ET

Bred | Polled | Red | 04.14.2024 | 481 | \*x4388474

CF PAYWEIGHT X ET	BYLAND FLASH 9U106	BEPD 2.6
	SULL CRYSTAL'S LADY 6265D ET	WEPD 63
CF HHF MARGIE 2106 HC X ET	FREE K-KIM HOT COMMODITY	YEPD 88
	CF MARGIE 9114 SOL ET	MEPD 22
		\$BMI 150.98
		\$CPI 152.21

Bred to JSF Heritage 8L; due February 3, 2026.

This is one of the youngest, but also one of my favorites, in the bred heifer group. Her full sister was just crowned the Grand Champion Female of the E.D.G.E. Show at the Junior Nationals. I love this female's feminine look, sweeping rib cage, and impeccable structure. Imagine the possibilities with this mating to Heritage and the impressive set of numbers it will create.





# The Crystal/ Dream Lady/ Margie Family



22		CF KLS MARIGE 431 24K X			
Bred		Polled		Black	02.03.2024   431   *xar4388464
SCC SCH 24 KARAT 838		SCC TRADITION OF 24		BEPD	3
		FCF PROVEN QUEEN 419		WEPD	66
		FREE K-KIM HOT COMMODITY		YEPD	94
CF CSF MARGIE 885 HC X ET		CF MARGIE 119 SOL X ET		MEPD	20
				\$BMI	127.28
				\$CPI	125.79

Bred to JSF KANE Cinch; due January 16, 2026.

This female will likely be picked out of the group rather quickly. She is a very impressive individual. You will love her thickness and body volume, as well as her structure and balance. Cinch will work great on her.



23		CF ROSE 479 CHINCH X			
Bred		Polled		Roan	04.04.2024   479   *x4388472
JSF KANE CINCH 61H		SASKVALLEY OUTLAW 173Z		BEPD	1.3
		KANE RED REBA 613E		WEPD	49
		FREE K-KIM HOT COMMODITY		YEPD	68
R/F SARA'S ROSE 175 K ET		SULL SARA ROSE 8193 ET		MEPD	24
				\$BMI	128.01
				\$CPI	139.26

Bred to JSF Heritage 8L; due February 7, 2025.

This is an attractive young female with a very functional maternal pedigree. Margie's are usually safe bets to make cows.

# The Demi Family



24		CF NB DEMI 595 PRIMO X ET			
Heifer		Polled		Black	04.30.2025   595   *xar4395893
COLBURN PRIMO		DAMERON FIRST CLASS		BEPD	3.3
		SILVEIRAS SARAS DREAM 1339		WEPD	61
		CF SOLUTION X ET		YEPD	92
CF CSF DEMI 650 SOL ET		WHR LS DEMI 8931 ET		MEPD	14
				\$BMI	93.13
				\$CPI	110.47

This has been a very consistent mating for us. Grady McGrew showed a full sister that was Grand Champion Female at both the Junior Nationals and Louisville. Samantha Vanvorhis showed another full sister that was Reserve Grand at OKC and Top Five at Junior Nationals. The Demi cow was much beloved and brings back so many great memories of showing cattle with the Nikkel family.



CF NB DEMI 21 ... Grand Champion Female, 2023 NJSS, shown by the McGrew Family



# The Max Rosa Family



**SULL SPECIAL ROSA 1151J...**  
dam of Lot 24.



**25**

## CF SPECIAL ROSA 520 EV X ET

Heifer | Polled | RWM | 02.01.2025 | 520 | \*x4395871

CSF EVOLUTION HC

FREE K-KIM HOT COMMODITY  
CF BOY CAROLINE 210 ET

SULL SPECIAL ROSA 1151J

SULL DREAM MAKER 9141G ET  
SULL MAX ROSA 310-3 ET

BEPD 2.4  
WEPD 47  
YEPD 72  
MEPD 18  
\$BMI 115.84  
\$CPI 117.29

Retaining 50% embryo interest after show career.

You never want to get beat at a cow show, but the year this female's mother won Louisville for Kathy Lehman, there was little doubt she was the best one there that day. When I got up to the ring and saw her, I thought to myself, I hope we can be reserve to that one. That impression prompted me to invest in some of the highest-dollar eggs I'd ever bought. Let's just say it turned out pretty good. This one is special, and we would like to stay involved with her and build this cow family in our herd. This female is also a full sister to the ultra-hot GOAT bull. I feel this female's quality should do nothing but boost his popularity.



**26**

## CF KLS MAX ROSA 560 EV X ET

Heifer | Polled | Roan | 03.17.2025 | 560 | \*x4395883

CSF EVOLUTION HC

FREE K-KIM HOT COMMODITY  
CF BOY CAROLINE 210 ET

SS MAX ROSA 029 ET

SULL PROPEL 7187E ET  
CYT MAX CY ROSA 1110 ET

BEPD 2.4  
WEPD 47  
YEPD 70  
MEPD 19  
\$BMI 121.08  
\$CPI 132.29

This young heifer checks all the boxes to be a very successful show heifer for some lucky junior. She has amazing presence and eye appeal, along with extra muscle and shape from behind. Her color and hair are a big added bonus that will keep her competitive throughout the year. Selling Shorthorn show heifers would be easy if they all looked like this.



# Bred Females



## 27 CF MYRTLE BO 249 OM X ET

Bred | Polled | RWM | 03.01.2022 | 249 | \*x4359047

TRN OMAHA 79	FREE K-KIM HOT COMMODITY	BEPD 3.6
	GCC TURNERS MARGIE 542 E ET	WEPD 41
SULL MARTHA'S BO 7974E ET	LITTLE CEDAR AVIATOR 503X	YEPD 59
	SULL BO'S MARTHA 4101 ET	MEPD 21
		\$BMI 93.08
		\$CPI 74.39

Bred to CF Payweight with SEXED HEIFER semen; due September 12, 2025.

This will be a female that makes a strong impression if you're able to attend the sale. She is beautifully fronted and very striking, with plenty of width, power, and bone. Her cool and versatile pedigree makes her a potential donor cow. The Payweight heifer she's carrying could pay for her—and then some—on the very first calf.



## 28 CF CHERRI 456 PRIMO X ET

Bred | Polled | BWM | 03.05.2024 | 456 | \*xar4395861

COLBURN PRIMO	DAMERON FIRST CLASS	BEPD 1.2
	SILVEIRAS SARAS DREAM 1339	WEPD 52
SULL CHERRI 205 -2 ET	WHR SONNY 8114	YEPD 80
	MCKEE'S ASL CHERRI 742	MEPD 16
		\$BMI 90.24
		\$CPI 121.98

Bred to JSF Heritage 8L; due January 16, 2026.

You don't see many bred heifers selling anywhere with this kind of quality and "it" factor. This female has all the extras and will be a producer of quality that stands out. A full sister topped the sale last year to Baylor Cowden, and we feel strongly that heifer will be a big-time donor cow as well.



## 29 CF SIMMENTAL

Bred | Polled | Black | 04.30.2024 | 456 | \*xar4396985

CF PAYWEIGHT X ET	BYLAND FLASH 9U106	BEPD -
	SULL CRYSTAL'S LADY 6265D ET	WEPD -
SIM 78		YEPD -
		MEPD -
		\$BMI -
		\$CPI -

Bred to JSF Heritage 8L; due February 7, 2026.

This is a little different twist than the rest of the breds. My dad bought an extremely good, bred heifer from Jones Show Cattle in Ohio, and she has been an incredible female here, doing everything right. This Payweight female should be a model cow - great feet and legs, stout, and easy keeping. She was very gentle in the picture pen and, consequently, did not want to get her head real high for her photo. You will truly appreciate this female in person.



## SEXED HEIFER SEMEN ...

### 30

### CF PAYWEIGHT X ET

Bull | Scurred | Roan | 03.11.2021 | 164 | \*\$4329601

BYLAND FLASH 9U106	STUDER'S UNIVERSAL 10B	BEPD 3.7
	BYLAND CINDY BEAUTY5M106	WEPD 81
SULL CRYSTAL'S LADY 6265D ET	JSF MARQUIS 127X	YEPD 117
	SULL LADY CRYSTAL-434P-1 ET	MEPD 27
		\$BMI 171.56
		\$CPI 162.29

LOT 30A ... Selling two units of CF Payweight SEXED HEIFER semen.

LOT 30B ... Selling two units of CF Payweight SEXED HEIFER semen.

LOT 30C ... Selling two units of CF Payweight SEXED HEIFER semen.

CF Payweight is truly a unique sire. He offers outcross genetics to most of the popular show ring genetics. He offers the ability to consistently add frame size and tremendous growth without sacrificing body depth or durability. On paper he ranks in the top 1% for growth and \$BMI as well as the top 15% for \$CPI. His first four daughters were offered in the sale last year averaged over \$50,000. Those females all have won their division at a national show since then. We have sold two sons in the Summit Sale the past two years that have averaged \$81,000. The Champion E.D.G.E heifer at the junior nationals this year was a Payweight daughter. Payweight is right for the times in our great breed and its probably time to get on board and give him a try if you haven't yet.

## SEMEN ...

### 31

### JSF KANE CINCH 61H

Bull | Polled | Roan | 02.25.2020 | 61H | \*x4313477

SASKVALLEY OUTLAW 173Z	SASKVALLEY INNOVATION 131X	BEPD 0.3
	STAR P JODY ROSE 5X	WEPD 52
KANE RED REBA 613E	KANE CAPTAIN 10B	YEPD 76
	KANE LADY REWARD 613C ET	MEPD 24
		\$BMI 128.10
		\$CPI 153.83

LOT 31A ... Selling three units of JSF KANE Cinch 61H semen.

LOT 31B ... Selling three units of JSF KANE Cinch 61H semen.

LOT 31C ... Selling three units of JSF KANE Cinch 61H semen..

Cinch is on fire right now. I get asked frequently if we offer any Cinch semen for sale. He is an outcross sire that has proven the ability to produce National Champions. We will have a lot of cinch calves next year out of some of our best donors. We unfortunately lost Cinch this spring so future semen sales could be limited.

## SEMEN ...

### 32

### CF S/F UPPER HAND X ET

Bull | Polled | RWM | 03.05.2018 | 866 | \*X4276827

LITTLE CEDAR AVIATOR 503X	WHR SONNY 8114	BEPD 202
	NPS ROSES RIDER 031 ET	WEPD 43
CF HHF MARGIE 2106 HC X ET	FREE K-KIM HOT COMMODITY	YEPD 61
	CF MARGIE 9114 SOL ET	MEPD 16
		\$BMI 108.81
		\$CPI 101.60

LOT 32A ... Selling three units of CF S/F Upper Hand semen.

LOT 32B ... Selling three units of CF S/F Upper Hand semen.

LOT 32C ... Selling three units of CF S/F Upper Hand semen.

This very proven bull continues to work for us and many across the country. His ability to translate quality and completeness is incredible. He is still walking the pasture and Wickard's and Shouflers and looks unbelievable.



# cattlemen's congress champions



**CF CRYSTAL LUCY 384**  
'25 Grand Champion Female, Open Show  
... shown by Carter Wickard



**CF CRYSTAL LUCY 384**  
'25 Grand Champion Female, Junior Show  
... shown by Carter Wickard



**CF CRYSTAL LUCY 230**  
'24 Grand Champion Female, Open Show  
... shown by Carter Wickard



**CF MAX ROSA 332**  
'24 Grand Champion ShorthornPlus  
Female, Jr Show ... shown by  
Grady McGrew



**CF NB DEMI 21**  
'24 Reserve Grand Champion  
ShorthornPlus Female, Open Show ...  
shown by Grady McGrew



**CF CRYSTAL LUCY 230**  
'23 Grand Champion Female, Open Show  
... shown by Paige Wickard



**CF CSF DREAM LADY 140**  
'23 Reserve Grand Champion Female, Open  
Show ... shown by Miller Smith



**CF CSF DREAM LADY 140**  
'22 Grand Champion Female,  
Jr Shows ... shown by Miller Smith



**CF NB DEMI 024**  
'22 Reserve Grand Champion  
ShorthornPlus Female, Jr Show ...  
shown by Samantha Van Vorhis



**CF CSF CRYSTALS SWAN 015**  
'21 Grand Champion Female, Jr Show ...  
shown by Houston Ferree



**CF SUNFLOWER 965 UR**  
'21 Grand Champion Female, Jr Show ...  
shown by Makenzie Laughery



**CF CSF MONA LISA 934**  
'21 Grand Champion ShorthornPlus Female  
... shown by Samantha VanVorhis

# n.a.i.l.e. champions



**CF PC MONA LISA 350**  
'24 Grand Champion Female, Open Show  
... shown by Miller Smith



**CF PC MONA LISA 350**  
'24 Reserve Grand Champion Female,  
Jr Show ... shown by Miller Smith



**CF MONA LISA 238**  
'23 Reserve Grand Champion ShorthornPlus  
Female, Jr Show ... shown by  
Samantha VanVorhis



**CF KLS DREAM ON 221**  
'22 Grand Champion ShorthornPlus,  
Jr Show ... shown by Houston Ferree



**CF CSF DREAM LADY 135**  
'22 Reserve Grand Champion Female,  
Open Show ... shown by Skyler Ward



**CF MONA LISA OP**  
'22 Grand Champion ShorthornPlus, Open  
Show ... shown by Samantha VanVorhis



**CF MONA LISA OP**  
'22 Reserve Grand Champion  
ShorthornPlus, Jr Show ... shown by  
Samantha VanVorhis



**CF HHF MARGIE**  
'20 Grand Champion Female, Open Show ...  
shown by Houston Ferree



**CF CSF MONA LISA PRIMO**  
'20 Grand Champion ShorthornPlus, Jr &  
Open Show ... shown by Samantha  
VanVorhis



**CF HHF MARGIE**  
'20 Grand Champion Female Jr Show ...  
shown by Houston Ferree



**CF CSF MONA LISA PRIMO**  
'20 Grand Champion ShorthornPlus,  
Jr Show ... shown by Samantha VanVorhis



**CF CSF CRYSTAL SWAN 015**  
'19 Grand Champion Female, Jr Show ...  
shown by Mark Inskeep





**CF MONA LISA 382**  
'25 Grand Champion ShorthornPlus  
Female, Open Show ... shown by  
Jozie Beiser



**CF MONA LISA 382**  
'25 Grand Champion ShorthornPlus  
Female, Jr Show ... shown by  
Jozie Beiser



**CF PC MONA LISA 350**  
'25 Reserve Grand Champion Female,  
Open Show ... shown by Miller Smith



**CF CHERRI 944**  
'25 Reserve Grand Champion ShorthornPlus  
Female, Open Show ... shown by  
Samantha VanVorris



**CF KLS DREAM ON 221**  
'23 Grand Champion ShorthornPlus Female,  
Open Show ... shown by Houston Ferree



**CF KLS DREAM ON 221**  
'23 Grand Champion ShorthornPlus Female,  
Jr Show ... shown by Houston Ferree



**CF MONA LISA PRIMO 115X**  
'22 Grand Champion ShorthornPlus  
Female, Open Show ... shown by  
Houston Ferree



**CF CSF DREAM LADY 140**  
'22 Grand Champion Female,  
Open Show ... shown by Miller Smith



**CF MONA LISA 136**  
'22 Grand Champion ShorthornPlus  
Female, Jr Show ... shown by Shyan Bennett



**CF CRYSTAL LUCKY 384**  
'24 Grand Champion Female, Jr Show ...  
shown by Carter Wickard



**CF MARGIE 340**  
'24 Reserve Grand Champion ShorthornPlus  
Female, Jr Show ... shown by Piper Cates



**CF CRYSTAL LUCY 230**  
'24 Grand Champion Female, Jr Show ...  
shown by Paige Wickard



**CF CRYSTAL LUCY 230**  
'24 Reserve Grand Champion Female, Open  
Show ... shown by Paige Wickard



**CF NB DEMI 21**  
'23 Grand Champion ShorthornPlus  
Female, Jr Show ... shown by  
Grady McGrew



**CF CSF DREAM LADY 140**  
'21 Reserve Grand Champion Female, Jr  
Show ... shown by Miller Smith



**CF CRYSTALS LUCY 073**  
'21 Supreme Champion Shorthorn  
and Grand Champion Female, Open Show  
... shown by Reed Schumacher



**CF MONA LISA PRIMO 115**  
'21 Grand Champion ShorthornPlus,  
Jr Show ... shown by Houston Ferree



**CF MONA LISA PRIMO 115**  
'21 Grand Champion ShorthornPlus,  
Open Show ... shown by Houston Ferree



**CF CRYSTALS LUCY 073**  
'21 Grand Champion Shorthorn Female  
& Fifth Overall Supreme Champion Female,  
Jr Show ... shown by Reed Schumacher



**CF CSF CRYSTAL SWAN 015**  
'19 Grand Champion Female, Open Show ...  
shown by Mark Inskeep



**CF V8 MONA LISA REWARD 782**  
'18 Reserve Grand Champion Female,  
Jr Show ... shown by Ryan Wickard



**CF CSF MARGIE 611**  
'17 Reserve Grand Champion Female,  
Jr Show ... shown by Mark Inskeep



**CF CSF DREAM LADY 78**  
'17 Reserve Grand Champion Female, Open  
Show ... shown by Cornerstone Farms



**CF V8 MONA LISA SMILES 526**  
'16 Reserve Grand Champion Female,  
Open Show ... shown by John Reasor



# 10 YEARS OF CHAMPIONS / national junior shorthorn show



**CF ROSEBUD 3120**

'25 Reserve Grand Champion Female ...  
shown by Skylar Ward



**CF MONA LISA 484**

'25 Fifth Overall Champion Female ...  
shown by Grady McGrew



**CF LADY CRYSTAL 41**

'25 Reserve Grand Champion ShorthornPlus  
Female ... shown by Carter Wickard



**CF LV MARGIE 430**

'25 Grand Champion E.D.G.E. Heifer ...  
shown by Reagan James



**CF CRYSTAL LUCY 384**

'24 Grand Champion Female ...  
shown by Carter Wickard



**CF PC MONA LISA 350**

'24 Fourth Overall Champion Female ...  
shown by Miller Smith



**CF MONA LISA 182**

'24 Third Overall Champion ShorthornPlus  
Female ... shown by Josie Beiser



**CF DREAM ONLY 473**

'24 Fourth Overall Champion ShorthornPlus  
Female ... shown by Lindsey Jester



**CF NB DEMI 21**

'23 Grand Champion ShorthornPlus Female ...  
shown by Grady McGrew



**CF KLS DREAM ON 221**

'23 Third Overall Champion ShorthornPlus  
Female ... shown by Houston Ferree



**CF JOLENE 1223**

'23 Fourth Overall Champion ShorthornPlus  
Female ... shown by Samantha VanVorhis



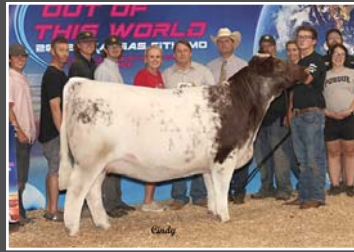
**CF MONA LISA 2117**

'23 Fifth Overall Champion Shorthorn Female ...  
shown by Audrey Robertson





**CF MONA LISA 148**  
'22 Reserve Grand Champion Female  
... shown by Keegan McGrew



**CF MONA LISA 0121**  
'22 Third Overall Champion Female  
... shown by Carter Meyer



**CF MONA LISA PRIMO 115**  
'22 Reserve Grand ShorthornPlus Female ...  
shown by Houston Ferree



**CF MONA LISA 136**  
'22 Fourth Overall ShorthornPlus Female ...  
shown by Shyan Bennett



**CF CSF CRYSTALS SWAN 015**  
'21 Grand Champion Female  
... shown by Houston Ferree



**CF MAX ROSA 025**  
'21 Fourth Overall Champion Female  
... shown by Kane Aegerter



**CF CSF MARGIE 093**  
'21 Fifth Overall Champion Female ... shown by  
Keegan McGrew



**CF NM DEMI 024**  
Fourth Overall ShorthornPlus Female ...  
shown by Samantha VanVorhis



**CF CSF AUGUSTA PRIDE 8147**  
'20 Grand Champion Female ...  
shown by Cole Whisman



**CF CSF MARGIE 830**  
'19 Fifth Overall Champion Female  
... shown by Mark Inskeep



**CF MAX ROSA 811**  
'19 Third Overall Champion Female  
... shown by Ryan Wickard



**CF CSF MAX ROSA 725**  
'18 Fifth Overall Champion Female  
... shown by Sara Sullivan



**CF V8 MONA LISA REWARD 780**  
'18 Grand Champion Female  
shown by Miller Smith



**CF CSF DEMI 650 SOL**  
'17 Fourth Overall Champion Female  
shown by Jacob Nikkel



**CF MARGIE 611H**  
'17 Reserve Grand Champion Female  
shown by Mark Inskeep



**CF CSF MARGIE 575**  
'16 Grand Champion Female  
shown by David Smith



# 2024 - 2025 champions



\$9,500

## CF PC MARGIE 4920 REV X

Reserve Division Champion,  
2025 Indiana State Fair

Congratulations Kayla Sankey



## CCF TRAVELING RUBY 394

Grand Champion Female, 2024 FWSS  
Grand Champion Female, 2024 American Royal  
Congratulations Reed Hanes



## CF MAX ROSA 324

Grand Champion Female,  
2024 Keystone Junior & Open Show  
Congratulations Bayler Cowden



## CF FERREE FITZ CRYSTAL SWAN

Reserve Grand Champion ShorthornPlus  
Female, 2025 FWSS  
Congratulations Samantha VanVorhis



## CF MONA LISA PAYS 445

Division Champion, 2024 NAILE  
Division Champion, 2025 Cattlemen's Congress  
Division Champion, 2025 FWSS  
Division Champion, 2025 NJSS  
Congratulations Alyssa Meier



\$20,000

## CF LADY CRYSTAL 41

Reserve Grand Champion ShorthornPlus  
Female, 2025 NJSS  
Reserve Division Champion Female,  
2024 American Royal  
Reserve Division Champion Female,  
2025 Cattlemen's Congress  
Congratulations Carter Wickard



\$12,000

## CF MONA LISA 42

Reserve Champion Shorthorn Female,  
2025 Ohio Beef Expo  
Congratulations Addison Jordan



## CF MONA LISA 410

Class Winner, 2025 NJSS  
Division Champion, 2024 Keystone Junior  
& Open Show  
Congratulations Sawyer McGrew



\$9,000

## CF MONA LISA 410S

Class Winner, 2024 NAILE  
Congratulations Jace Blaeser





\$10,000

### CF MONA LISA 488

Grand Champion Female, 2025 Pennsylvania Farm Show, Jr & Open Shows  
Congratulations Lilly Whiting



\$7,000

### CF MONA LISA 4100 LL

Reserve Grand Champion Female, 2025 Pennsylvania Farm Show  
Division Champion Female, 2024 Keystone  
Congratulations Iva Mummert



\$10,000

### CF MONA LISA 440

Champion ShorthornPlus Female, 2025 Ohio Beef Expo & Ohio AGR  
Reserve Division Champion, 2025 NJSS  
Congratulations Gage Farrar



### CF MARGIES DREAM 482

Division Champion, 2024 NAILE Junior Show  
Champion Shorthorn Female, 2025 Illinois Beef Expo  
Congratulations Maddox Reedy



\$12,000

### CF MONA LISA 3134

Division Champion, 2024 NAILE Junior Show  
Reserve Division Champion, 2025 Cattlemen's Congress Junior Show  
Third Overall Division Champion, 2025 NJSS  
Congratulations Maddox Reedy



### CF LV MARGIE 430

Division Champion, 2025 Cattlemen's Congress Junior Show  
Grand Champion Female, 2025 E.D.G.E. NJSS  
Congratulations Reagan James



### CF PC MISSING MIRAGE 474M

Division Champion, 2024 NAILE Junior Show  
Reserve Division Champion, 2025 FWSS  
Third Overall Division, 2025 NJSS  
Congratulations Karter Kornegay



### CF MONA LISA 4124

Reserve Division III Champion, 2025 NJSS  
Congratulations Samantha VanVorhis



### CF LV MONA LISA 460 TB

Class Winner, 2025 NJSS  
Congratulations Wyatt Dryer



\$15,000

### CF DREAM ONLY 485

Reserve Division Champion, 2025 NJSS  
Reserve Champion Shorthorn, 2025 Hoosier Beef Congress  
Division Champion, 2025 Indiana State Fair  
Congratulations Weston Ward



\$6,000

### CF MARGIE 3128

Division Champion Female, 2024 Dixie National  
Congratulations Samantha Cossett



\$10,000

### CF A/B DREAM LADY 2419 UR

Reserve Champion Female, 2024 Ohio Beef Expo  
Class Winner, 2024 NAILE  
Congratulations Kezlee Carson



\$17,000

### CF MAX ROSA 450

Division Champion, 2024 NAILE Junior Show  
Division Champion, 2025 Cattlemen's Congress, Junior & Open Shows  
Reserve Division Champion, 2025 NJSS  
Champion ShorthornPlus Female, 2025 Indiana State Fair  
Congratulations Mallory Inskip



### CF MAX ROSA 425

Reserve Division Champion, 2024 Keystone  
Reserve Grand Champion Female, 2025 WV Block & Bridle  
Congratulations Grady McGrew



\$6,000

### CF MONA LISA 455

Reserve Division Champion, 2024 Keystone  
Congratulations Emily Vance



### CF PC MARGIE 476

Division Champion, 2024 American Royal  
Reserve Division Champion Female, 2025 Cattlemen's Congress Jr & Open Show  
Division Champion, 2025 FWSS  
Class Winner, 2025 NAILE  
Class Winner, 2025 NJSS  
Congratulations Knox Neumayr





# CATTLEMEN'S CONGRESS *supreme champion*

## SSF ENVIOUS BLACKBIRD 5022

- Supreme Champion Female & Champion Angus, '24 Cattlemen's Classic Jr Show
- Champion Angus Female, '24 FWSS Open Show
- Fourth Overall Champion Female, '23 Atlantic Nationals Open Show
- Third Overall Champion Female, '23 All-American Angus Breeders' Futurity Open Show
- Division Champion, '23 NJAS & '23 All-American Angus Breeders' Futurity Junior Show

Congratulations Samantha Van Vorhis

# ANGUS *champions*



## SSF LADY 5030

- 2021 Atlantic National Junior Show Grand Champion Female
- 2021 Atlantic National Open Show Grand Champion Female
- 2021 All-American Breeders' Futurity Junior Show Grand Champion Female
- 2021 All-American Breeders' Futurity Open show Grand Champion Female
- 2021 American Royal Junior Show Grand Champion Female
- 2021 NAILE Junior Show Reserve Grand Champion Female
- 2021 NAILE Open Show Reserve Grand Champion Female
- 2022 Cattlemen's Congress Junior Show Grand Champion Female
- 2022 Fort Worth Stock Show Reserve Grand Champion Female
- 2022 All-American Breeders' Futurity Supreme Champion Female
- 2022 NJAS Grand Champion Cow/ Calf Pair

Congratulations Houston Ferree

'22 AMERICAN ANGUS ASSOCIATION

*show heifer  
of the year*



# 2024 - 2025 champions

/ *n.a.i.l.e*

## SSF BLACKCAP N123

Division Champion and Grand Champion Bred & Owned Female, '24 NAILE Jr Show  
Reserve Division Champion, '24 NAILE Open Show  
Congrtulations Piper Cates



## SSF DS LADY 1314

Division Champion, '24 NAILE  
Congrtulations Weston Hagg



## ALL DUE RESPECT

Reserve Grand Champion Bull, '24 NAILE  
Congrtulations to the Coulter Family,  
Four Corners and Circle M



## SSF HAG GEORGINA 9053

Division Champion, '24 NAILE  
Congrtulations Mercedes Ferree

/ *cattlemen's congress*



## SSF PROVEN QUEEN 4084

Division Champion,  
'25 Cattlemen's Congress  
Congrtulations Mercedes Ferree



## SSF BLACKCAP N123

Division Champion and Grand Champion Bred & Owned Female,  
'25 Cattlemen's Congress Jr Show  
Reserve Division Champion,  
'25 Cattlemen's Congress Open Show  
Congrtulations Piper Cates



## SSF HAG GEORGINA 9053

Reserve Division Champion,  
'25 Cattlemen's Congress Jr Show  
Congrtulations Mercedes Ferree



## atlantic national

### SSF BLACKCAP N123

Third Overall Champion  
Bred & Owned Female,  
'25 Atlantic National  
Congrtulations Piper Cates



### SSF HAG GEORGINA 9053

Third Overall Champion  
Female, '25 Atlantic  
National  
Congrtulations  
Mercedes Ferree

## national junior angus show

### SSF PROVEN QUEEN 4084

Division Champion,  
'25 NJSS  
Congrtulations  
Mercedes Ferree



### SSF HAG GEORGINA 9053

Division Champion,  
'25 NJSS  
Congrtulations  
Mercedes Ferree

## other champions

### SSF ENVIOUS BLACKBIRD 3304

Champion Angus Female and Fourth Overall, '25 Ohio Beef Expo  
Class Winner, '25 Cattlemen's Congress  
Congrtulations to Samantha VanVorhis



### SSF ENVIOUS BLACKBIRD 5024

Reserve Grand Champion Angus Female,  
'25 Kentucky Beef Expo  
Reserve Grand Champion Female,  
'25 All-American Futurity Kentucky Heifer  
Congrtulations Kennedy Evans



### SSF DS LADY 5214

Division Champion Female,  
'25 Dixie National ROV Show  
Congrtulations to Trey Davis



### SSF HAG GEORGINA 9293

Supreme Champion Female, '24 South Carolina  
Junior Beef Round-Up  
Division Champion, '25 Dixie National ROV Show  
Congrtulations Trey Davis



# The Lady Impression Family



**SSF LADY IMPRESSION O265**



**SSF DS LADY 5214...**  
Division Champion, Dixie National  
ROV Show, shown by Trey Davis



**SSF DS LADY 1314...**  
Division Champion, 2024 NAILE,  
shown by Westin Hagg



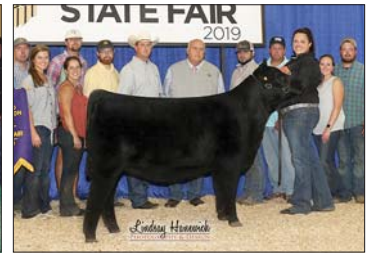
**SSF DS LADY 2262 ...**  
Grand Champion Female, '23  
Atlantic National Junior Show;  
Third Overall Champion Female,  
'23 Atlantic National Open Show;  
Grand & Supreme Overall Female,  
'23 All-American Angus Breeders'  
Futurity Jr show; Division Champion,  
'23 NJAS, shown by Kelly Spicer



**SSF DS LADY 4301 ...**  
Reserve Grand Champion Heifer,  
'24 Futurity ROV Show,  
shown by Anderson Pender



**SSF DS LADY 3023 ... '24 Atlantic**  
National Jr Show Fourth Overall  
Champion Owned Female & Division  
Champion; '24 Atlantic National  
Open Show Reserve Division  
Champion and '24 Cattlemen's  
Classic Class Winner,  
shown by Allison Davis



**SSF LADY 0138 ...**  
'19 Indiana State Fair Open Show  
Supreme Champion Female,  
shown by Katie Brock



**SSF LADY 4191 ...**  
'24 Ohio State Fair Reserve  
Champion Crossbred Female;  
Reserve Division Champion, NAILE,  
Reserve Grand Champion,  
Keystone; Reserve Division  
Champion American Royal and Fifth  
Overall Champion, Ohio Beef Expo,  
shown by Samantha VanVorhis



**SSF DS LADY 1183 ...**  
'24 Purdue AGR Champion  
Angus Female,  
shown by Caroline Shuman



**SSF LADY 5030 ... '21 Atlantic**  
National Junior & Open Shows  
Grand Champion Female; '21 All-  
American Breeders' Futurity Junior &  
Open Show Grand Champion  
Female; '21 American Royal Junior  
Show Grand Champion Female; '21  
NAILE Junior & Open Show Reserve  
Grand Champion Female; '22  
Cattlemen's Congress Junior Show  
Grand Champion Female; '22 Fort  
Worth Stock Show Reserve Grand  
Champion Female; '22 All-American  
Breeders' Futurity Supreme  
Champion Female and '22 NJAS  
Grand Champion Cow/ Calf Pair,  
shown by Houston Ferree



**SSF DS LADY 0062 ... '24 Atlantic**  
National Jr Show Senior Yearling  
Division Champion & Senior Yearling  
Division Reserve Champion, '24  
Atlantic National Open Show,  
shown by Weston Haag



# The Lady Impression Family



**33A**



**33B**

## **33A** SSF DS LADY 1145

Heifer | Black | 01.14.2025 | 1145 | AAA +21311450

## **33B** SSF DS LADY 2035

Heifer | Black | 02.03.2025 | 2035 | AAA +21311452

		BEPD 3.5
SCC SCH 24 KARAT 838	SCC TRADITION OF 24	WEPD 59
	FCF PROVEN QUEEN 419	YEPD 99
SSF LADY IMPRESSION O265	DAMERON FIRST IMPRESSION	MEPD 24
	COPPER CRK LADY LUT 1120	SC 146

LOT 33A ... When you talk about wow factor, this heifer comes to mind. I'm not sure we've ever had a female this chiseled in her front end and this stout featured. I believe she has the ability to compete on the biggest stages at the national level, but I also think she's as good an Angus heifer as we've ever had for the spring shows and jackpot setting. She is a little later maturing, and her hair is currently in a down phase, but she was the hairiest Angus calf we had at birth. I have full confidence in my crew that she'll hair back up and look the part when it matters most. Retaining 50% embryo interest after show career.

LOT 33B ... This may be the most complete and fault-free heifer in the group. She is flawless in her structural design, beautiful in her balance and underline, and so elegant through her front end. This one will make an awesome big-time show heifer and a beautiful Angus cow.

## **33C** 4 SEXED HEIFER IVF EMBRYOS

Selling one package of Four SEXED Heifer IVF Embryos.

SCC SCH 24 KARAT 838 X SSF LADY IMPRESSION O265

## **33D** 4 SEXED HEIFER IVF EMBRYOS

Selling one package of Four SEXED Heifer IVF Embryos.

KR CASINO 6243 X SSF LADY IMPRESSION O265



# The Lady Impression Family



**SSF DS LADY 2262 ...**  
full sister to Lot 34, shown by Kelly Spicer

**34**

## SSF DS LADY 3205

Heifer | Black | 03.20.2025 | 3205 | AAA +21311453

EXAR BLUE CHIP 1877B	DAMERON FIRST CLASS	BEPD 3.4
	GREENS PRINCESS 1012	WEPD 62
SSF LADY IMPRESSION O265	DAMERON FIRST IMPRESSION	YEPD 101
	COPPER CRK LADY LUT 1120	MEPD 14
		SC 158

This is a full sister to Kelly Spicer's heifer that was so dominant a couple of summers ago. Like that female, she offers a little extra growth and extension, but with even more center body and swoop. This cow doesn't miss - and these Blue Chips make incredible donors.

**34A**

## SSF DS LADY O103

Bred | Black | 10.10.2023 | 1145 | AAA +20953058

EXAR BLUE CHIP 1877B	DAMERON FIRST CLASS	BEPD 3.4
	GREENS PRINCESS 1012	WEPD 62
SSF LADY IMPRESSION O265	DAMERON FIRST IMPRESSION	YEPD 101
	COPPER CRK LADY LUT 1120	MEPD 17
		SC 158

Bred to PVF Blacklist 7077 SEXED HEIFER SEMEN; due January 16, 2026.

As many of you know, I'm always quick to talk about the Angus breeds we offer - I take just as much pride in them as I do the show heifers. This royally bred female will catch your eye, and she's carrying a Blacklist heifer calf that could easily double your investment. Our good friend and loyal SSF customer, Conner Dupler, is a great example of the success these Angus breeds can bring.



**35**

## SSF DS LADY 0053

Bred | Black | 10.05.2023 | 0053 | AAA PENDING

BNWZ DIGNITY 8017	PVF INSIGHT 0129	BEPD -
	CCC SARA'S DREAM 5116	WEPD -
SSF LADY IMPRESSION O265	DAMERON FIRST IMPRESSION	YEPD -
	COPPER CRK LADY LUT 1120	MEPD -
		SC -

Bred to Conley A1 4248; due February 2, 2026.

A big, powerful female with loads of mass and dimension. Her sire is as hot as any bull out there right now, and the bull she's bred to is one of the fastest-rising stars in terms of popularity. And to top it off - she's pregnant with a heifer calf.





# The Lady Impression Family

36

## SSF DS LADY 4194

Bred | Black | 04.19.2024 | 4194 | AAA +21312376

SSF ON POINT 4028

COLBURN PRIMO 5153

BEPD 2.6

PLUM CREEK ANNIE LU 4472

WEPD 52

SSF LADY IMPRESSION 0265

DAMERON FIRST IMPRESSION

YEPD 91

COPPER CRK LADY LUT 1120

MEPD 18

\$C 104



Bred to PVF Blacklist 7077 SEXED HEIFER SEMEN; due February 5, 2026.

Quite a few of these breds came into the picture pen and had me second-guessing my selection process last year. This female's structure and quality would have made her a very competitive show heifer. She's a full sister to the heifer shown so successfully by Allison Davis last year.



## All Due Respect

Champion Angus Bull, 2025 FWSS

Reserve Champion Angus Bull, 2024 NAILE, Atlantic National & Angus Futurity

Owned with Circle M Farms, Four Corners Farms & the Coulter Family



# The Proven Queen Family



37A



37B

## 37A SSF PROVEN QUEEN 1315

Heifer | Black | 01.31.2025 | 1315 | AAA +21311451

## 37B SSF PROVEN QUEEN 4305

Heifer | Black | 04.30.2025 | 4305 | AAA +21311454

SSC SCH 24 KARAT 838	SCC TRADITION OF 24	BEPD 3.9
	FCF PROVEN QUEEN 419	WEPD 57
	SILVEIRAS STYLE 9303	YEPD 97
	DAMERON PROVEN QUEEN 333	MEPD 18
SSF PROVEN QUEEN 5029		SC 160

## 37C 4 SEXED HEIFER IVF EMBRYOS

Selling one package of Four SEXED Heifer IVF Embryos.

KR CASINO 6243 X SSF PROVEN QUEEN 5029

LOT 37A ... This one has been big-time since birth. Without being a high birth weight calf, she was the most impressive one-day-old Angus heifer we've ever had born here. And she's done nothing but continue to impress every step of the way. Starting at the ground up, this heifer has some of the biggest feet I've ever seen on an Angus, with perfect, flexible joints and angles. She's very broody and cowy in her build, with genuine width at her pins, through her chest, and in her forerib. She's already getting big-haired and will no doubt be a favorite of many. Retaining 50% embryo interest after show career.

LOT 37B ... The 5029 cow is as hot right now as any we have. We own her in partnership with Breckyn Bloomberg and Porter Cattle. She recently produced the April female that won her division at Junior Nationals for Mercedes Ferree. We also have a full brother we're really excited about and plan to bring out this fall. This April female reminds us so much of her mother at this age - the same female that was so successful for Sara Sullivan.



# The Proven Queen Family



## 38

### SSF PROVEN QUEEN 9013

Bred | Black | 09.01.2023 | 9013 | AAA +21312441

S A V BISMARCK 5682

G A R GRID MAKER

S A V ABIGALE 0451

DAMERON PROVEN QUEEN 333

DAMERON FIRST CLASS

PVF PROVEN QUEEN 602

BEPD 1.7

WEPD 48

YEPD 79

MEPD 17

\$C 180

Bred to PVF Blacklist 7077 SEXED HEIFER SEMEN; due February 17, 2026.

This is one big, impressive female. The daughters and granddaughters of the 333 cow are known for their strong maternal qualities and beautiful udders - and we all know the kind of cows Bismarck daughters make. This one will make you stop in your tracks.



## 39

### SSF PROVEN QUEEN 0223

Bred | Black | 10.22.2023 | 0223 | AAA PENDING

SILVEIRAS STYLE 9303

GAMBLES HOT ROD

SILVEIRAS ELBA 2520

DAMERON PROVEN QUEEN 333

DAMERON FIRST CLASS

PVF PROVEN QUEEN 602

BEPD -

WEPD -

YEPD -

MEPD -

\$C -

Bred to PVF Blacklist 7077 SEXED HEIFER SEMEN; due February 17, 2026.

This is a full sister to 5029 and shares the same impeccable feet and leg structure. My uncle Randy purchased another full sister to this female - also bred to Blacklist sexed semen - and that mating quickly resulted in a heifer calf that sold for \$20,000 to the Sellmeyer family and has been extremely competitive. This female has those same capabilities.



### SSF PROVEN QUEEN 5029...

SSF Proven Queen 5029, Division Champion, '21 Atlantic Nationals, '21 Cattlemen's Classic and '20 NWSS, NJAS and American Royal, shown by Sara Sullivan



SSF PROVEN QUEEN 4084...  
Division Champion, NJAS & Cattlemen's Congress, and Reserve Champion Angus, '25 Indiana State Fair, shown by Mercedes Ferree





# The Envious Blackbird Family



40

## SSF ENVIOUS BLACKBIRD 3025

Heifer | Black | 03.02.2025 | 3025 | AAA +21311556

SSF ON POINT 4028

COLBURN PRIMO 5153

PLUM CREEK ANNIE LU 4472

PVF INSIGHT 0129

EXAR ENVIOUS BLACKBIRD 5983

EXAR ENVIOUS BLACKBIRD 1760

BEPD 3.9  
WEPD 59  
YEPD 100  
MEPD 15  
\$C 167

Kyle and I have been pretty high on this one from the start. She's a full sister to the Blackcrow bull we won Louisville with, along with Haggard Angus and Winegardner/Klingaman Show Cattle. She's also a maternal sister to Samantha VanVorhis's Supreme Champion in OKC. This female sets herself apart with her unique ability to be so long bodied while still carrying impressive shape in her muscle and rib design. She ties her neck in high and is as good out of her front knee and shoulder as any we've had out of her mother. We think this heifer does a lot of things right.



**SSF ENVIOUS BLACKBIRD 5022...** '24 Cattlemen's Classic Junior Show Supreme Champion Heifer & Champion Angus; Champion Angus Female, FWSS Open Show; Fourth Overall Champion, '23 Atlantic Nationals Open Show; Third Overall Champion Female, '23 All-American Angus Breeder's Futurity Open Show; and Division Champion, '23 NJAS & '23 All-American Angus Breeders' Futurity Jr Show, shown by Samantha VanVorhis



**SSF ENVIOUS BLACKBIRD 3304 ...** Champion Angus Female & Fourth Overall Champion, '25 Ohio Beef Expo and Class Winner, '25 Cattlemen's Congress, shown by Samantha VanVorhis



**SSF ENVIOUS BLACKBIRD 5024 ...** Reserve Champion Angus Female, '25 Kentucky Beef Expo, shown by Kennedy Evans



**HAGG BLACK CROW ...**  
Grand Champion Bull, '22  
NAILE

## SSF ENVIOUS BLACKBIRD 2243...

'24 Supreme Champion Heifer & Champion Angus, Ring 1 & 2 Michigan Fall Kick-off, Thumb Beef Jackpot, Paul Delong Memorial & Diamond Classic; Third Overall Champion, Sandusky Showdown; Reserve Champion Commercial Heifer, Michigan Winter Classic & Champion Angus Heifer, Ring 1 & Reserve Angus Heifer, Ring 2, Michigan AGR, shown by Lindsey Kavanagh





# The Envious Blackbird Family



## 41 SSF ENVOIOUS BLACKBIRD 1014

Bred | Black | 01.01.2024 | 1014 | AAA 21312442

STAG GOOD TIMES 201	SCC SCH 24 KARAT 838	BEPD 3.0
	SCC SCH PHYLLIS 6104	WEPD 60
EXAR ENVOIOUS BLACKBIRD 5983	PVF INSIGHT 0129	YEPD 102
	EXAR ENVOIOUS BLACKBIRD 1760	MEPD 21
		SC 205

Bred to PVF Blacklist 7077 SEXED HEIFER SEMEN; due February 6, 2026.

Lots 41 and 42 are a great example of the mass and power 5983 stamps into all her offspring. Lot 41 is a full sister to the heifer Samantha VanVorhis showed to a Third Overall finish at the Ohio Beef Expo this year. We're gearing that one up for the fall and feel she's looking really good.



## 42 SSF ENVOIOUS BLACKBIRD 1104

Bred | Black | 01.10.2024 | 1104 | AAA +21312444

SELDOM REST SANDMAN 6075	EXAR CLASSEN 1422B	BEPD 4.1
	SILVEIRAS S SIS SANDY 2354	WEPD 62
EXAR ENVOIOUS BLACKBIRD 5983	PVF INSIGHT 0129	YEPD 97
	EXAR ENVOIOUS BLACKBIRD 1760	MEPD 19
		SC 210

Bred to Conley Monoco; due April 10, 2026.

Lots 41 and 42 are a great example of the mass and power 5983 brings to all her offspring. Lot 42 is a very complete female who combines that power with the maternal strength of the Sandy cow family through her sire, Sandman.



WATCH & BID  
LIVE ONLINE  
CCI.LIVE



# The Georgina Family



43A



**SSF HAG GEORGINA 9295 ...**  
Senior Division Champion, '25 Dixie National  
ROV Show, shown by Trey Davis



**SSF HAG GEORGINA 9053 ...**  
Third Overall Champion Female, '25 Atlantic  
National Open Show; Division Champion, '24  
NAILE; and Fourth Overall Champion Female &  
Division Champion, '24 Atlantic National;  
Reserve Division Champion, '25 NJAS and  
Champion Angus Female, '25 Indiana State Fair,  
shown by Mercedes Ferree



43B

**43A SSF GEORGINA 3305**  
Heifer | Black | 03.30.2025 | 3305 | AAA +21312485

**43B SSF GEORGINA 4145**  
Heifer | Black | 04.14.2025 | 4145 | AAA +21312486

SCC SCH 24 KARAT 838 SCC TRADITION OF 24  
FCF PROVEN QUEEN 419  
EXAR BLUE CHIP 1877B  
HAGGARDS LH GEORGINA 1701  
CHAMPION HILL GEORGINA 3634

BEPD 4.6  
WEPD 58  
YEPD 102  
MEPD 18  
SC 177

These two outstanding show heifer prospects are full sisters to the impressive senior yearlings that have been so successful for Mercedes Ferree and Trey Davis. We feel the A heifer is one of our best. She is ultra complete and can compete at any level. The B heifer is really high performing and growthy with extra stoutness and great movement.

This year, we chose to sell only what we feel were our top eight heifer calves. It's getting harder to provide the level of customer service we believe our buyers deserve. With the number of Shorthorns we take to each show, it has pushed us to focus on a very select group of Angus heifers for the show ring. The upside? That focus is exactly what has made the Angus bred in our sale so high in quality.

**LOT 43A ...** Retaining 50% embryo inserts after show career.



# The Sandy Family



44A



44B



44C



**SSF SANDY 2163 ...**  
Reserve Breed Champion,  
'24 Ohio State Fair,  
shown by Samantha  
VanVorhis



**SSF SANDY 3054 ...**  
Fifth Overall Champion  
Female & Champion  
Angus, Fall Kick-off Show,  
shown by Lindsey  
Cavanaugh

**44A** **SSF SANDY 3144**  
Bred | Black | 03.14.2024 | 3144 | AAA +21312446

**44B** **SSF SANDY 4014**  
Bred | Black | 04.01.2024 | 4014 | AAA +21312447

**44C** **SSF SANDY 4024**  
Bred | Black | 04.02.2024 | 4024 | AAA +21312448

SCC SCH 24 KARAT 838

CONLEY S SIS SANDY 4313

SCC TRADITION OF 24  
FCF PROVEN QUEEN 419  
SILVEIRAS STYLE 90.

K N C CABIN CREEK SANDY 804

BEPD	5.1
WEPD	56
YEPD	92
MEPD	18
SC	164

LOT 44A ... Bred to Conley Manaco; due Februray 27, 2026.

LOT 44B ... Bred to PVF Blacklist 7077 SEXED HEIFER SEMEN; due Februray 6, 2026.

LOT 44C ... Bred to PVF Blacklist 7077 SEXED HEIFER SEMEN; due Februray 6, 2026.

These three full sisters are a great example of how focusing on a select group of show heifers can elevate the quality of your breds. When each of them came into the picture pen, I couldn't help but think they would've looked pretty dang competitive at Junior Nationals. The A heifer was actually one of our top picks last year but suffered a back injury. Thankfully, she healed up perfectly. These cattle look like show cattle - and they'll produce show cattle.



# The Sandy Family

45

## SSF GEORGINA 4145

Heifer | Black | 04.14.2025 | 4145 | AAA +21312486

SCC SCH 24 KARAT 838  
SCC TRADITION OF 24  
FCF PROVEN QUEEN 419  
EXAR BLUE CHIP 1877B  
HAGGARDS LH GEORGINA 1701  
CHAMPION HILL GEORGINA 3634

BEPD 4.6  
WEPD 58  
YEPD 102  
MEPD 18  
SC 177

Bred to Conley A1 4248 SEXED HEIFER SEMEN; due January 9, 20263

This striking female is 4313's natural calf, offered in partnership with Casey Kruckenberg and the Smith Family. She's a sleek, attractive female bred to calve early to the hot new sire, Conley A1.



## COULTER FCF ALL DUE RESPECT

| AAA 20794959

S | BNWZ DIGNITY 8017  
D | FCF PROVEN QUEEN 117  
(SILVEIRAS STYLE 9303)

## Service Sires

## PVF BLACKLIST 7077

| AAA +\*18944889

S | PVF INSIGHT 0129  
D | PVF BLACKBIRD 3070  
(DAMERON FIRST CLASS)



## CONLEY A1

| AAA +\*20177675

S | GATEWAY FOLLOW ME F163  
D | EXAR PRINCESS 6741  
(BC II SKYFALL 2812)

## SSF ON POINT 4028

| AAA +\*19272390

S | COLBURN PRIMO 5153  
D | PLUM CREEK ANNIE LU 4472  
(GAMBLES HOT ROD)



## CONLEY MANACO 3993

| AAA +\*20776610

S | J TRADEMARK 1037  
D | CONLEY SANDY 7350  
(EGB CONFEDERATE 504)





# The Blackcap Family



## 46 IVF CYCLE ... SSF BLACKCAP N123

Female | Black | 11.01.2023 | N123 | AAA +20929769

SSF ON POINT 4028	COLBURN PRIMO 5153	BEPD 2.8
	PLUM CREEK ANNIE LU 4472	WEPD 51
	S A V BISMARCK 5682	YEPD 83
SSF BISMARCK STRUCTURE 5220	SSF BLACKCAP STRUCTURE 4188	MEPD 18
		SC 148

This female has been so much fun for our family. She stems back to Courtney's reserve bred and owned champion female at the junior nationals when she was showing. The Bismark structure cow was our first angus donor cow and has definitely left her mark on our herd. "Gwen" as she is known here was fortunate enough to be the Grand Champion bred and owned female at both Louisville and OKC for Piper. Two Angus breeders I hold in very high regard have ask us to price half of this female but I have two bosses I live with that were not too keen on the idea. I felt offering this lot in the sale was a nice compromise. Her pedigree offers an endless amount of mating options to most of today's most popular sires.

## 47 SEMEN ... SSF ON POINT 4028

Bull | Black | 04.02.2018 | 4028 | AAA +\*19272390

COLBURN PRIMO 5153	DAMERON FIRST CLASS	BEPD 3.7
	SILVEIRAS SARAS DREAM 1339	WEPD 52
	GAMBLES HOT ROD	YEPD 92
PLUM CREEK ANNIE LU 4472	SH MISS ANNIE LU 6087	MEPD 11
		SC 85

The On Point cattle are definatley still working as evidenced by the one in this sale and by Pipers bred and owned heifer. We feel he is as good at fixing feet and leg structure as any bull in the breed, especially off their front end. Unfortunately he died at a very early age and we were left with a limited supply of semen, so we were forced to take it off the market. We are really using him hard again and feel he still has a lot to offer the breed

LOT 47A ... Selling three units of SSF On Point 4028 semen.

LOT 47B ... Selling three units of SSF On Point 4028 semen.

LOT 47C ... Selling three units of SSF On Point 4028 semen.





# Thank You

It is always hard to believe when it's time to start in preparation for this catalog every year. Outside of the opening speech it's the hardest part of having this sale. Thankfully I have amazing people around me that allow me the time to get it all put together.

This continues to be a family venture. My retired, but definitely not retired, dad continues to lead by example of what hard work is and what taking pride in something means. I thank my loving mom for giving up their retirement together to allow him to be here. My Cousin Tanner continues to be a big part of the operation leading the charge in hay production and grass maintenance. Kyle and Lauren Shoufler as well as their son Hudson are as important to this operation as the cattle themselves. They dedicate their lives to this place just like Cortney, Piper and I do. This operation is as much theirs as it is ours.

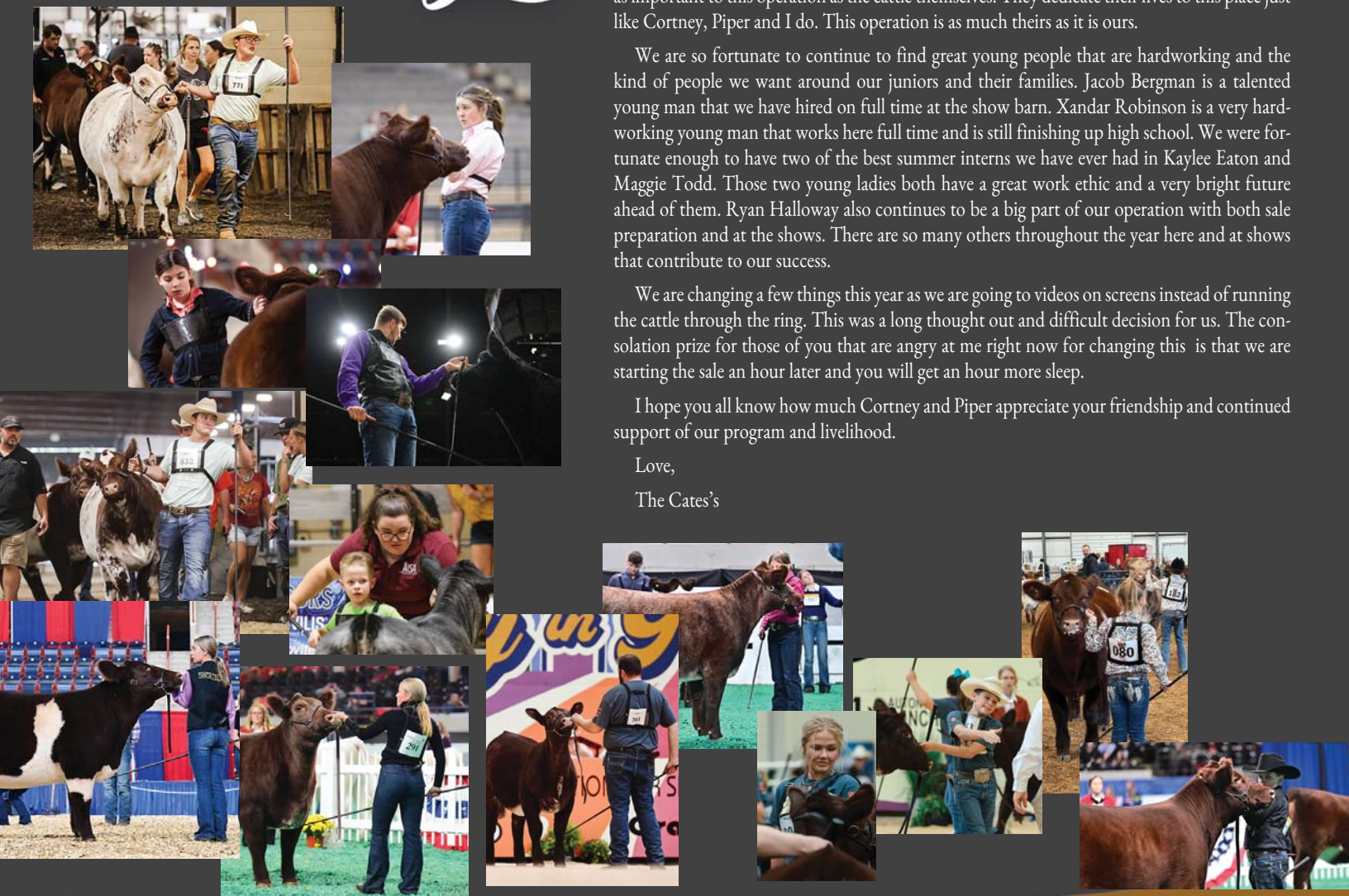
We are so fortunate to continue to find great young people that are hardworking and the kind of people we want around our juniors and their families. Jacob Bergman is a talented young man that we have hired on full time at the show barn. Xandar Robinson is a very hardworking young man that works here full time and is still finishing up high school. We were fortunate enough to have two of the best summer interns we have ever had in Kaylee Eaton and Maggie Todd. Those two young ladies both have a great work ethic and a very bright future ahead of them. Ryan Hallaway also continues to be a big part of our operation with both sale preparation and at the shows. There are so many others throughout the year here and at shows that contribute to our success.

We are changing a few things this year as we are going to videos on screens instead of running the cattle through the ring. This was a long thought out and difficult decision for us. The consolation prize for those of you that are angry at me right now for changing this is that we are starting the sale an hour later and you will get an hour more sleep.

I hope you all know how much Cortney and Piper appreciate your friendship and continued support of our program and livelihood.

Love,

The Cates's





Shorthorn Country  
7607 NW Prairie View Rd  
Platte Woods, MO 64151-1544

**FIRST CLASS  
PRE-SORTED  
PAID**

Montezuma, Iowa  
Permit No. 30



*Cates Farms*

**STAR**  
*search* XXIII

SATURDAY, AUGUST 30, 2025 | NEW TIME ... 11:30 P.M. E.S.T. | at the farm | Modoc, IN