



**SATURDAY, SEPTEMBER 2, 2023**

10:30 AM EST | at the farm | Modoc, Indiana

# STAR SEARCH XXI SALE

**SATURDAY  
SEPTEMBER 2, 2023**

10:30 AM EST  
at the farm  
Modoc, Indiana


Entrance to parking is located at the intersection of US  
36 and Indian Trail Road. It is 200 yards west of sale site.



Tyler, 765.576.0035 | Cortney, 410.707.0267  
Kyle & Lauren Shoufler, 317.650.7999  
Brian & Angie, 765.969.0373  
Randy & Janet, 765.853.5819 | Tanner Cates  
7893 South Indian Trail, Modoc, IN 47358  
[www.catesfarms.com](http://www.catesfarms.com)



Cortney Hill-Dukehart Cates, 410.707.0267  
Tyler Cates, 765.576.0035  
Kyle Shoufler, 317.650.7999  
Bob Hill & Marlene Dukehart  
7893 South Indian Trail, Modoc, IN

Like us on ... 

## SCHEDULE OF EVENTS

### FRIDAY, SEPTEMBER 1ST

6:00 pm View the cattle and enjoy a meal  
& fellowship with the Cates families

RC Cattle Open House  
[www.SCONlinesales.com](http://www.SCONlinesales.com)  
Cattle available Friday - Sunday

Smith Family Farms Cattleman's Cut  
Open House - Cattle available Friday - Sunday

### SATURDAY, SEPTEMBER 2ND

10:30 am Cates Farms Star Search XXI  
Shorthorn Production Sale

Lunch will be provided by Graze On Catering

4:00 pm Smith Family Farms Cattleman's Cut  
Open House - Cattle available Friday - Sunday

6:30 pm Cornerstone Farms Born To Be Rock Stars  
Volume IV Sale, Winchester, IN

6:30 pm Indiana Fall Classic Sale

RC Cattle Open House  
[www.SCONlinesales.com](http://www.SCONlinesales.com)  
Cattle available Friday - Sunday

**WATCH & BID LIVE ONLINE**  
CCI.LIVE



## SALE DAY PHONES

Brian 765.969.0373  
Randy 765.914.1504  
Cortney 410.707.0267

## SALE ACCOMMODATIONS

Randolph Inn & Suites  
765.584.8281 Winchester, IN

Holiday Inn  
765.488.1975 Richmond, IN

Hampton Inn & Suites  
765.966.5200 Richmond, IN

## AUCTIONEER

Cody Lowderman 309.313.2171

## SALE MANAGERS

Aegerter Marketing Services, Inc.  
Jeff K. Aegerter 402.641.4696  
[jeff.aegerter@gmail.com](mailto:jeff.aegerter@gmail.com)  
[www.aegertermarketing.com](http://www.aegertermarketing.com)

Cagwin Cattle Services, Inc.,  
Don Cagwin  
217.452.3051 or 217.341.7552  
FAX: 217.452.3053  
[cagwincattle@casscomm.com](mailto:cagwincattle@casscomm.com)  
Cindy Cagwin-Johnston, 217.452.3056

Sears Marketing Services  
Alan K. Sears 970.396.7521 or 970.454.3986  
[alan.sears@aksears.com](mailto:alan.sears@aksears.com)  
[searsmarketingservices.com](http://searsmarketingservices.com)

## LIVESTOCK REPRESENTATIVES

Kent Jaecke, Special Representative  
405.408.2440

Darryl Rahn, *Shorthorn Country*  
217.473.1124

Montie Soules, ASA Executive Secretary/Treasurer  
918.645.4322

Stuart Wilson, Sale Consultant  
217.454.9355

Scott Trennepohl, Sale Consultant  
765.620.1700

Jason Smith, Sale Consultant  
256.338.0023

Jeremey Hagg, Sale Consultant  
406.833.0117

## INSURANCE

Cindy Cagwin-Johnston, 217.452.3056

## THANK YOU

Thank you to Tanner Cates, Kyle Shoufler, Lauren Shoufler, Brad Johnson, Britany Blankinship, Colby Manning, Ryan Holaway and Carter Meyer for making our cattle on sale day look great.

Photos taken by Cortney Cates, Kyle Shoufler and Cindy Cagwin-Johnston.

# ANGUS



*Courtney*

ANGUS heifer selling as Lot 46A



2022 Angus Show  
Heifer of the Year  
- Shown by  
Houston Ferree



Fourth Overall Champion Female, '23 Atlantic National Open Show; Third Overall Champion Female, '23 All-American Angus Breeders Futurity; Div Champion, '23 NJAS  
- Shown by Samantha VanVorbis

Supreme Champion  
Female, '23 All-American Angus Breeders Futurity; Grand Champion Owned Female, '23 Atlantic National and Div Champion '23 NJAS  
- Shown by Kelly Spicer

# SHORTHORNPLUS



Grand Champion  
Female, '23 NJSS  
- Shown by  
Grady McGrew



Grand Champion  
Female, '22 NAILE  
Open Show & Reserve  
Grand Champion  
Female, '22 NAILE  
Junior Show  
- Shown by Samantha  
VanVorbis



Grand Champion Female, '23 Cattlemen's Congress Junior & Open Show and '22 NAILE Junior Show  
- Shown by Houston Ferree



SHORTHORNPLUS heifer selling as Lot 17B

# SHORTHORN



SHORTHORN heifer selling as Lot 1A



2022 Shorthorn Show Heifer  
of the Year  
- Shown by Miller Smith



Reserve Grand Champion Female, '22 NAILE Open Show  
- Shown by Skyler Ward

Grand Champion  
Female, '23 Cattlemen's  
Congress Open Show  
- Shown by Paige  
Wickard



# MONA LISA FAMILY



Full sib to Lots 1A & 1B ... CF Mona Lisa 281, '22 Keystone Reserve Champion Female and NAILE Division Champion, Shown by Keagan McGrew



Full sib to Lots 1A & 1B ... CF Mona Lisa 148, '22 NJSS Reserve Grand Champion Female and Keystone Champion Shorthorn Female, Shown by Keagan McGrew

LOT 1A

LOT 1B



Full sib to Lots 1A & 1B ... CF Mona Lisa 222, '22 NAILE and '23 Cattlemen's Congress Reserve Division Champion, Shown by Michael Frisbie



1A

**CF MONA LISA 2135 LL X ET**

Heifer | \*x4359088 | Polled | Roan | 12.22.2022 | 2135

FREE K-KIM HOT COMMODITY	BEPD 1.9
CSF LONG LOOK HC 706 ET	WEPD 42
CF MARGIE 119 SOL X ET	YEPD 60
SULL RED REWARD 9321	MEPD 22
SULL MONA LISA REWARD ET	
CYT TIAWANA 864U ET	

Retaining half embryo interest

I think that you will find with this offering, that the backdrops and banners aside, one cannot have too much of Mona Lisa reward 3289's influence in your herd. She is the standard for which all other Shorthorn females should be measured against for fertility and productivity. This is one of her best daughters to date. This December daughter is elite in her skeletal design and offers extra length and extension.

1B

**CF MONA LISA 3116 LL ET**

Heifer | \*4359089 | Horned | Red | 05.19.2023 | 3116

FREE K-KIM HOT COMMODITY	BEPD 1.9
CSF LONG LOOK HC 706 ET	WEPD 42
CF MARGIE 119 SOL X ET	YEPD 60
SULL RED REWARD 9321	MEPD 22
SULL MONA LISA REWARD ET	
CYT TIAWANA 864U ET	

This little girl was barely big enough to be caught by the head catch when we pictured her, yet you could still read the overall quality and presence she had when in the picture pen. I read her to have plenty of body and substance as she grows and matures.



LOT 2

2

### CF MONA LISA 388 OM X ET

Heifer | \*x4359095 | Polled | Roan | 04.17.2023 | 388

TRN OMAHA 79

FREE K-KIM HOT COMMODITY

BEPD 4.6

GCC TURNERS MARGIE 542 E ET

WEPD 46

SULL RED REWARD 9321

YEPD 65

SULL MONA LISA REWARD ET

MEPD 23

CYT TIAWANA 864U ET

Retaining half embryo interest

This female has defiantly been a farm favorite since birth and never has a bad day. This is a little different twist on the 3289 cows, and she continues to prove she works with each and every bull she is mated to. This young female will no doubt catch the attention of as many people as any and will cause you to dream of the possibilities with her. This is a very intriguing creature that will be high in the sale order.

2A

### 4 IVF SEXED HEIFER EMBRYOS

Selling one package of four Sexed Heifer embryos.

TRN OMAHA 79 X SULL MONA LISA REWARD ET

Full sib embryos to Lot 2.

## GENERAL INFORMATION

**Feeding & Showing Terms:** We pride ourselves in the professional way we exhibit your purchases. Here, at Cates Farms, we employee some of the best fitters in the business at both the farm and the shows. We spare no expenses to exhibit your cattle to ensure your success. The charges below are not designed for us to make money, rather to insure we can continue to offer the best service to you. Each animal that will be located at Cates Farms show barn will be charged \$25/day. Each animal will be charged \$250/day while attending shows with Cates Farms crew. This will cover all expenses while at shows. All animals must be insured while in our care/possession. Any veterinary expense above routine will be owners obligation. All accounts will be billed monthly.

**Breeding Update/Calving Information:** There will be added information available at the sale site that will list any additions to the catalog information as to new calves born and new breeding information that will occur after the printing of this catalog.

**Half Interest Females:** The owner will own 100% of the animal. Cates Farms will get 1/2 of the embryos from each flush. Semen on all of our bulls will be available. Cost will be split.

**Breeding Guarantee:** All cattle sell under the Standard Breeding Guarantee recommended by the American Shorthorn Association. An exception would be through mishandling either obesity or under nourishment and illegal practices associated with showing the female.

**Registration & Transfer:** All animals sell with completed pedigrees or applications for registration.

## MONA LISA Champions

CF Mona Lisa 0119 TP, '21 American Royal, NAILE and NWSS Division Champion, Shown by Gabriella Leone



CF Mona Lisa 002, Division Champion, '21 Cattlemen's Congress Junior Show and Reserve Division, '20 NAILE, Shown by Alyssa Carter



CF Mona Lisa 1121, Division Champion, '22 & '23 NJSS, '22 NAILE & '23 Cattlemen's Congress, Shown by Carter Wickard



# MONA LISA FAMILY



LOT 3A



LOT 3B



CF Mona Lisa 2101, Division Champion,  
'23 Cattlemen's Congress,  
Shown by Miller Smith

CF Mona Lisa 2112,  
Division Champion,  
'22 NAILE and  
Keystone  
International,  
Shown by  
Makayla Sugg



LOT 3C

3A

## CF MONA LISA 31 UH X ET

Heifer | \*x4359090 | Polled | Roan | 01.01.2023 | 31

3B

## CF MONA LISA 318 UH X ET

Heifer | \*x4359091 | Horned | Roan | 01.17.2023 | 318

3C

## CF MONA LISA 336 UH X ET

Heifer | \*x4359092 | Polled | Red | 02.13.2023 | 336

CF S/F UPPER HAND X ET

LITTLE CEDAR AVIATOR 503X

CF HHF MARGIE 2106 HC X ET

SULL RED REWARD 9321

SULL MONA LISA REWARD ET

CYT TIAWANA 864U ET

BEPD 2.6  
WEPD 45  
YEPD 68  
MEPD 22

LOT 3A - This has been a consistently good mating but with some differences among the flush mates. I personally love the broodiness and cow like appearance of this female. She is so long, deep bodied, and plenty stout. I love her soundness, foot size, and shape. She is not the freakiest necked animal, but her neck is plenty long and skillful, and a disciplined feeder could certainly get this female in the winner's circle.

LOT 3B - This is very solid heifer that should be a lot of fun for a lucky junior the next couple of years. She is attractive colored, good haired and has a stout dimensional build. She is tremendous behind her shoulders, down her top line, and out of her hip.

LOT 3C - This is maybe the most complete of the three sisters. She is probably the most attractive fronted and balances very nicely from the side. She is round and bold in her rib cage and powerful from behind.



LOT 4A

4A

### CF MONA LISA 355 SOL X ET

Heifer | \*x4359093 | Polled | RWM | 03.05.2023 | 355

4B

### CF MONA LISA 360 SOL X ET

Heifer | \*x4359094 | Polled | Roan | 03.16.2023 | 360

CF SOLUTION X ET

CF TRUMP X

BEPD 4.2

WEPD 54

YEPD 86

MEPD 20

NPS DESERT ROSE 004

SULL RED REWARD 9321

SULL MONA LISA REWARD ET

CYT TIAWANA 864U ET

4C

### 4 IVF SEXED HEIFER EMBRYOS

Selling one package of four Sexed Heifer embryos.

CF SOLUTION X SULL MONA LISA REWARD ET



LOT 4B

LOT 4A - This is a very good female that offers the body broodiness and fleshing ability of the 3289's but with more added size and performance. She has always had an extra gear compared to other sisters at this age.

It is hard to put a big hole in this one and these Solution daughters out of this cow just continue to win and produce at the highest level.

LOT 4B - This one will catch a lot of eyes, not just because of her cool and unique markings, but because of her substance and dimension as well. She is powerfully built and carries it well.

# MONA LISA

## Champions

CF Mona Lisa 0121, Division Champion, NAILE & Cattlemen's Congress; and Third Overall Champion Female, '22 NJSS, Shown by Carter Meyer



CF V8 Mona Lisa Reward 780, Grand Champion Female, '18 NJSS, Shown by Miller Smith



CF V8 Mona Lisa 935, Grand Champion Female, '20 American Royal; Reserve Grand Champion Female, '20 NWSS, Junior Show; and Division Champion at NAILE, NWSS & NJSS, Shown by Miller Smith



CF Mona Lisa 2117, '23 NJSS Fifth Overall Champion Female, shown by Audrey Robinson



CF V8 Mona Lisa Reward 782, Reserve Grand Champion Female, '18 NAILE and Grand Champion Female, '19 NWSS Jr & Open and FWSS, Shown by Ryan Wickard

CF Mona Lisa 1223, Division Champion, '23 NJSS, Shown by Baylor Cowden

SATURDAY, SEPTEMBER 2, 2023 7



| LOT 5



| LOT 6

5

**CF PC MONA LISA 350 CINCH X**

Heifer | \*x4359100 | Polled | Roan | 02.28.2023 | 350

JSF KANE CINCH 61H

SASKVALLEY OUTLAW 173Z

BEPD 2.2

AA KANE RED REBA 613E

WEPD 50

CSF CSF BACKDRAFT 703 RR ET

YEPD 77

CSF MONA LISA 2104 BD

MEPD 25

CF V8 MONA LISA SMILE 526

Retaining half embryo interest.

If there is anyone still worried about us keeping the best ones for Piper to show, this should end that discussion. This is Piper's bred and owned out of the very first heifer we bought for her from Jason Newcom. Piper wanted to show a bull at Junior Nationals, so I bred her cow to Cinch. Turns out this mating can produce an extremely high-quality show heifer and donor prospect as well. This female has the pieces to not only win the big shows but also make the kind that will. She offers a very fresh and different set of genetics and can be mated different ways for different purposes. For those that are now questioning my parenting and love for my daughter, I think her college fund could be seeing a pretty big bump come Labor Day weekend.

6

**CF MONA LISA 365 PW X ET**

Heifer | \*x4359102 | Polled | Red | 03.18.2023 | 365

CF PAYWEIGHT X ET

BYLAND FLASH 9U106

BEPD 4.5

SULL SULL CRYSTAL'S LADY 6265D

WEPD 68

CF SOLUTION X ET

YEPD 107

CF V8 MONA LISA REWARD 780 SOL X ET

MEPD 25

SULL MONA LISA REWARD ET

I truly wish I had more Payweights to offer this year, but the ones we do have are big time. We have two absolute stud bull calves you will be hearing from more this Fall and Winter. This is the only heifer calf we had by Payweight this year and if they all have this one's genuine build and functional cow like appearance than he is going to truly change and improve the breed. This females mother was a Junior National Champion for Miller Smith in 2018. I challenge you to envision a female you would rather have 50 of than this one in your cow herd.



LOT 7A



LOT 7B

7A

## CF MONA LISA 382 FER X ET

Heifer | \*xar4359990 | Polled | RWM | 04.10.2023 | 382

7B

## CF MONA LISA 3593 FER X ET

Heifer | \*xar4359991 | Polled | Black | 04.28.2023 | 3593

SULL FERRARI 6597D  
SILVEIRAS STYLE 9303  
SULL CRYSTAL JUDY 1471 ET  
COLBURN PRIMO  
CF CSF MONA LISA 934 PRIMO ET  
CF V8 MONA LISA SMILE 526

BEPD 3.1  
WEPD 64  
YEPD 100  
MEPD 52

LOT 7A - **ShorthornPlus** - This is maybe not the color of calf I expected when I watched this one come out, but as she grew this was exactly the quality I expected from this mating. Just like her mom this heifer is beautifully structured and has plenty of punch. This one will be fun.

LOT 7B - **ShorthornPlus** - This sister is the spitting image of her mother at this age. She is very advanced in her ribcage at an early age and very hairy and cool. Her ear hair is actually out of control! This heifer will be very popular sale day.

# MONA LISA *Champions*



CF Mona Lisa Primo 115X, '22 NJSS Reserve Grand Champion ShorthornPlus Female; '22 Cattlemen's Congress Open Show Grand Champion ShorthornPlus Female; '21 Hoosier Beef Congress Supreme Champion Female; and '21 NAILE Open & Junior Shows Grand Champion Female, Shown by Houston Ferree



CF Mona Lisa OP, '22 NAILE Grand Champion Female, Shown by Samantha Van Vorhis



CF Mona Lisa 136, '22 NJSS Fourth Overall Champion ShorthornPlus Female and Cattlemen's Congress Grand Champion ShorthornPlus Female, Shown by Shyan Bennett



Dam to Lots 7A & 7B ... CF CSF Mona Lisa 934, '21 Cattlemen's Congress & '20 NAILE Grand Champion ShorthornPlus Female; Scarlet & Grey, Midwest Showdown A & B; Clark County Cattle Battle A & B Champion ShorthornPlus; and Fifth Overall, DTS Cupid Classic A & B; Champion ShorthornPlus Ohio Best points, Shown by Samantha VanVorhis

# MAX ROSA FAMILY



Daughter of Lot 8 ... CF Max Rosa 811, '19 NJSS Third Overall Champion Female, Shown by Ryan Wickard



Daughter of Lot 8 ... CF Max Rosa 025, '21 NJSS Fourth Overall Champion Female, Shown by Kane Aegerter



Daughter of Lot 8 ... CF Max Rosa 195 Flash, '21 NAILE Reserve Division Champion, Shown by Brextyr Grabel



Daughter of Lot 8 ... CF Max Rosa 286 EV, '23 Kentucky Beef Expo Champion Shorthorn Female, Shown by Lane McCall



Granddaughter of Lot 8 ... LWFS Max Rosa, '23 NJSS Grand Champion Bred & Owned Heifer, bred and raised by Ryan Wickard

## 8

### CYT DSC MAX ROSA 4136 ET

Heifer | \*x4211128 | Polled | RWM | 03.16.2014 | 4136

WHR SONNY 8114  
LITTLE CEDAR AVIATOR 503X  
NPS ROSES RIDER 031 ET  
WHR SONNY 8114  
MINDEMANN MAX ROSA 310 ET  
HOMEDALE MAX ROSA

BEPD	5.8
WEPD	45
YEPD	83
MEPD	21

Open and ready to flush.

This has been one of our top producing donors over the past five years. Her added skeletal size and massive build has clicked so well with today's bulls. This female has put two daughters in the top five at the Junior Nationals and just had a granddaughter named Grand Champion Bred and Owned female for Ryan Wickard at this year's junior nationals. She has multiple other daughters that have been very successful as you can see in the support photos. This cow still IVF's and has averaged three frozen eggs per her last six cycles. I think that you will see by the offspring we are offering that this cow is still producing at as high a level as any in our program. It may only take one heifer calf to pay this cow off.



LOT 8A



LOT 8B

8A

CF MAX ROSA 324 TR X ET

Heifer

\*x4359097

Polled

Roan

01.26.2023

324

MILLBROOK FIREBALL 23F

MILLBROOK TRIBUTE FB 6023J

MAX SHADYBROOK VAL 60E

CYT DSC MAX ROSA 4136 ET

BEPD 3.1

WEPD 47

YEPD 74

MEPD 23

LITTLE CEDAR AVIATOR 503X

MINDEMANN MAX ROSA 310 ET

There were many qualities about the Tribute bull that caused us to get in on him and this female got them all. This female is beautifully colored, has great hair, and plenty of power and bone. She is square built but still has plenty of size and extension. I believe this one will be on many lists.

8B

CF MAX ROSA 340 UR X ET

Heifer

\*x4359099

Polled

RWM

02.18.2023

340

SULL RED REWARD 9321

CF CF S/F ULTIMATE REWARD ET

CF HHF MARGIE 2106 HC X ET

CYT DSC MAX ROSA 4136 ET

BEPD 2.3

WEPD 44

YEPD 72

MEPD 21

LITTLE CEDAR AVIATOR 503X

MINDEMANN MAX ROSA 310 ET

Very complete and fault free livestock here. This female is extremely attractive and extended through her front one third, but still very deep and soft through her center body. She is correct in her design and stout from behind. She may not be everyone’s favorite color, but I’ve never seen a heifer not win because she has white legs. In today’s world most people think the more chrome on them, the more they stand out.



LOT 8C



LOT 8D

8C

CF MAX ROSA 370 LL ET

Heifer

\*x4359103

Polled

RWM

03.26.2023

370

FREE K-KIM HOT COMMODITY

CSF CSF LONG LOOK HC 706 ET

CF MARGIE 119 SOL X ET

LITTLE CEDAR AVIATOR 503X

CYT DSC MAX ROSA 4136 ET

MINDEMANN MAX ROSA 310 ET

BEPD 3.2

WEPD 43

YEPD 69

MEPD 20

This female definitely elevated up in my rankings on picture day. She has a little more skeletal size like her mother, so she has been a little slower to mature. I have really struggled to find a reason why this female wouldn't be one of the very best ones in the end. This is a very good heifer backed by proven winning genetics.

8D

CF MAX ROSA 151 RR X ET

Bred

\*x4331604

Polled

Red

03.01.2021

151

SULL RED REWARD 9321

CYT DSC MAX ROSA 4136 ET

MINDEMANN MAX ROSA 310 ET

TEGM RED ADVANTAGE 100T

MCV MARGIE MILLION 503Q

LITTLE CEDAR AVIATOR 503X

MINDEMANN MAX ROSA 310 ET

BEPD 2.2

WEPD 44

YEPD 73

MEPD 22

Bred to Cinch due 09.22.2023.

This will be a really nice young female. She is high quality but just had some bad luck. She herself was stepped on as a calf and we never thought she would make it but she eventually caught up and looked great by the time she was a yearling. She bred first time AI last year but unfortunately lost it last September when it was really hot. The quality and genetics are here for sure, and her luck is due for a change. Her calf by Cinch should be very marketable regardless of sex.



LOT 9



CF SBF Max Rosa 124, '21 NAILE Reserve Division Champion, Shown by Paige Wickard



Maternal Sib to Lot 10 ... CF CSF Max Rosa 725, '18 NJSS Fifth Overall Champion Female, Shown by Sara Sullivan



Full sib to Lot 10 ... CF Max Rosa 245 RK, '23 FWSS Division Champion, Shown by Carter Meyer



LOT 10

9

**CF MAX ROSA 322 PRIMO X ET**

Heifer | \*xar4359108 | Polled | Black | 02.05.2023 | 332

COLBURN PRIMO	DAMERON FIRST CLASS	BEPD 2.8
	SILVEIRAS SARAS DREAM 1339	WEPD 55
	WHR SONNY 8114	YEPD 86
SULL MAX ROSA 310-3 ET	HOMEDALE MAX ROSA	MEPD 15

**ShorthornPlus**

Here is a direct daughter of the Max Rosa 310 donor cow. This has been a good female from the get-go. She is very true, and square built up high as well as at the ground. She balances very nicely from the side and has good volume and performance. This heifer should be competitive at any level.

10

**CF MAX ROSA 3100 RK X ET**

Heifer | \*x4359106 | Polled | Red | 05.02.2023 | 3100

	CF SOLUTION X ET	BEPD 3.2
SULL RED KNIGHT 2030 ET	K-KIM MONA LISA 10T ET	WEPD 64
	CF SOLUTION X ET	YEPD 105
CYT MAX ROSA 1145 ET	MINDEMANN MAX ROSA 310 ET	MEPD 23

I have stated before that I thought that 1145 was the best Max Rosa I ever saw. This May Red Knight daughter is very nicely made. She is elegant fronted and very balanced from the side. We sold a full sister to this heifer to Carter Meyer last year that won her division at Fort Worth.

# MAX ROSA FAMILY



11

## CF MAX ROSA 376 REV X

Heifer | \*x4359235 | Polled | RWM | 04.03.2023 | 376

RGLC SULL REVERENCE 013  
SULL RGLC LEGACY 525 ET  
KOLT WW SABLE GIRL 533 YET  
BSG PROFITWISE 1767  
SHADYBROOK PROSA 47H ET  
SULL TEETS MAX ROSA ET

BEPD	3.2
WEPD	47
YEPD	68
MEPD	24

We are extremely pleased with our Reverence calves so far. We have a bull that we are very high on that is sired by Reverence and out of Crossovers mother. This attractive young female is out of what was my pick of the Shadybrook sale in 2021. This female offers a unique and cool pedigree to breed off of, all the while being very competitive in the show arena.

SHORTHORN SHORTHORN SHORTHORN SHORTHORN SHORTHORN SHORTHORN SHORTHORN SHORTHORN SHORTHORN SHORTHORN

# RUBY/ RED TRAVELER FAMILY



12

## CF RED TRAVELER 311 RR X ET

Heifer | \*x4359096 | Polled | Red | 01.14.2023 | 311

SULL RED REWARD 9321  
TEGM RED ADVANTAGE 100T  
MCV MARGIE MILLION 503Q  
SULL TRAVELER 9807 ET  
SULL SULL RED TRAVELER 2405Z E ET  
HD RUBY 903

BEPD	2.1
WEPD	52
YEPD	82
MEPD	27

Retaining half embryo interest

This cow family is becoming more and more prevalent at Cates Farms as well as the entire breed. This powerful young female is a full sister to our 7144 donor cow. I'm not sure how many of you have been raising Shorthorns long enough to remember our Nobody's Fool cow, but this is the 2020's version of her. That cow changed our herd and the breed by injecting so much volume, muscle, and stoutness into her offspring at a time it was needed. I believe this female could make a tremendous impact on the breed by producing both male and female progeny.

RUBY  
Champs



SULL Traveling Ruby ET, dam of Lot 13 & 14.



SULL Red Traveler 2405Z, dam of Lot 12.



SULL Rosebud 7114E



CF Rosebud 090, '21 Cattlemen's Congress Open Show Division Champion  
Shown by Ryan Wickard



| LOT 13



| LOT 14

13

**CF TRAVELING RUBY 394 EV ET**

Heifer | \*4359105 | Horned | Red | 04.27.2023 | 394

CSF EVOLUTION HC	FREE K-KIM HOT COMMODITY	BEPD 2.2
	CF BOY CAROLINE 210 ET	WEPD 52
	SULL TRAVELER 9807 ET	YEPD 80
SULL TRAVELING RUBY ET	HD RUBY 903	MEPD 21

Retaining half embryo interest

This female checks all the boxes for Kyle and I on what it takes to be a national level show female - plus she has the extras. We believe she is extra correct in her angles and on the move. We believe she has extra muscle bone and rib. We think she has extra extension and look up front and we think she will be extra fun the next two years to go and compete with.

14

**OLSN RED HOT RUBY 3252 13D**

Bred | \*x4253136 | Polled | RWM | 09.12.2016 | 013D

	K-KIM ALLURE 124M ET	BEPD 1.5
FREE K-KIM HOT COMMODITY	K-KIM MEG 270N ET	WEPD 50
	SULL TRAVELER 9807 ET	YEPD 73
SULL TRAVELING RUBY ET	HD RUBY 903	MEPD 24

Bred to Cinch; due 10.20.2023.

This female is a past division champion at the Junior Nationals for Sara Sullivan. This female is a beast as she is so massively designed all the way through. I feel this cow family is just going to continue to grow in popularity.

# LADY CRYSTAL/ DREAM LADY FAMILY



LOT 15



Full sib to Lots 15 & 16 ... CF Crystal Lucy 230,  
Grand Champion Female, '23 Cattleman's Congress,  
Shown by Paige Wickard

LOT 16



Full sib to Lots 15 & 16 ... CF Crystals Lucy 073,  
'21 NAILE Open Show Grand Champion Female,  
Shown by Reed Schumacher



15

## CF CRYSTAL LUCY 384 RK X ET

Heifer | \*x4359104 | Polled | Roan | 04.13.2023 | 384

	CF SOLUTION X ET	BEPD 3.5
SULL RED KNIGHT 2030 ET	K-KIM MONA LISA 10T ET	WEPD 58
	LITTLE CEDAR AVIATOR 503X	YEPD 90
SULL CRYSTAL'S LUCY ET	SULL LADY CRYSTAL-434P-1 ET	MEPD 23

Retaining half embryo interest

Not many mating's are hotter than this one is currently. This is a full sister to both Reed Schumacher's Naile Champion and Paige Wickard's Champion at last year's Cattleman's Congress. She is also a full sister to our high selling fall of Reed Hanes that we expect to earn plenty of her own accolades this Fall and next Summer. This heifer calf is tremendous in terms of her genuine width and dimension from front to rear. She is still very sound and balanced, and symmetrical from the side. We are pretty high on this one as well.

16

## CF CRYSTALS LUCY 9100 RK X ET

Bred | \*4289505 | Polled | RWM | 05.01.2019 | 9100

	CF SOLUTION X ET	BEPD 3.6
SULL RED KNIGHT 2030 ET	K-KIM MONA LISA 10T ET	WEPD 58
	LITTLE CEDAR AVIATOR 503X	YEPD 91
SULL CRYSTAL'S LUCY ET	SULL LADY CRYSTAL-434P-1 ET	MEPD 23

Bred to Reverence; due 03.16.2023.

Here is another full sister to the extremely hot mating of Red Knight and Sull Crystal Lucy. This female herself was a division champion for Simon Farms in Louisville. 9100 is a model cow in so many ways. She is a moderate framed, stout made female that has a picture-perfect udder and tremendous structure and foot quality. This is an incredible opportunity to purchase a young donor cow with a red-hot pedigree that also covers all the brood cow fundamentals right before her prime producing years.



Dam of Lots 17A - 17C ... CF CSF Crystal Swan 015, Grand Champion Female at '20 NAILE Jr & Open Show, '21 Cattlemen's Congress and NJSS, Shown by Houston Ferree

17A

CF FERREE FITZ CRYSTALS SWAN 39 ET

Heifer | \*xar4359064 | Polled | BWM | 01.10.2023 | 39

17B

CF FERREE FITZ CRYSTALS SWAN 322 ET

Heifer | \*xar4359065 | Polled | Black | 01.23.2023 | 322

	SCC TRADITION OF 24	BEPD 2.5
SCC SCH 24 KARAT 838		WEPD 62
	CSF EVOLUTION HC	YEPD 93
CF CSF CRYSTALS SWAN 015 EV X ET		MEPD 21
	SULL CRYSTAL'S SWAN ET	

LOT 17A - **ShorthornPlus** - Not many Shorthorn females attained the feats that Crystal Swan 015 did for Houston Ferree. She was the only female I can remember to win both Louisville and Cattlemen’s Congress as a calf then come back and win Junior Nationals as well. This female has the same structural design and body shape that Houston’s heifer was so admired for. This is a very complete female that could be the pick of many of the Plus buyers.

LOT 17B - **ShorthornPlus** - Here is the freak. I’m not sure we have ever sold a female with a more exotic look than this female.

She was on a worthless recip and came in so skinny I really thought we would have to wait and sell her later. We went ahead and clipped and pictured her and as soon as she struck the first pose Kyle and I just looked at each other and smiled. This one could be very very special.

17C

CF FERREE FITZ CRYSTALS SWAN 2130 ET

Heifer | \*xar4359066 | Polled | Blue Roan | 12.05.2022 | 2130

SILVEIRAS STYLE 9303

GAMBLES HOT ROD

BEPD 3.6

SILVEIRAS ELBA 2520

WEPD 58

CF CSF CRYSTAL'S SWAN 015 EV X ET

FREE K-KIM HOT COMMODITY

YEPD 91

SULL CRYSTAL'S SWAN ET

MEPD 23

### ShorthornPlus

What a job 015 is doing for the Ferree Fitzgerald operation producing three females of this caliber in her first year of production. This December Style daughter has a beautiful silhouette and is extremely sound on the move. The December Plus purchased by the Jester Family in last year’s sale went on to get a piece of her division at NAILE, Cattlemen’s Congress as well as Junior Nationals.

# LADY CRYSTAL/ DREAM LADY FAMILY

Flush  
18

## SULL CRYSTAL'S LADY 6265D ET

Heifer | \*x4249644 | Polled | Red | 01.17.2016 | 6265D

JSF MARQUIS 127X

EIONMOR MARQUIS 86G

BEPD 2.7

JSF MARVEL 12U

WEPD 59

WHR SONNY 8114

YEPD 87

SULL LADY CRYSTAL-434P-1 ET

AF MARGIES DREAM LADY 05 ET

MEPD 28

IVF Flush with a guarantee of six embryos. If more than six are produced, buyer gets them all.

Open and ready to flush immediately.

This is the mother of Payweight and everyone's favorite cow when they come to visit. She truly puts the "beef" in beef cow production. She has an amazing udder and is perfect on her feet and legs. She has proven to not only be able to produce a breed changing herd sire, but all of her daughters to this date have excelled in the show ring as well. I get approached about eggs on this female more than any other cow so I thought I would offer this rare opportunity to obtain these great females genetics - and to any bull you want, including any of our bulls.



Daughter of Lot 18 ... CF Lady Crystal 160 BW, '21 NAILE Reserve Division Champion



Daughter of Lot 18 ... CF Crystal Lady 290 UR, Division Champion, '23 Cattlemen's Congress



Son of Lot 18 ... CF Payweight

19A

## CF DREAM ONLY 0120 AV X ET

Bred | \*x4359045 | Polled | Red | 09.01.2020 | 120

19B

## CF DREAM ONLY 0122 AV X ET

Bred | \*x4359046 | Polled | RWM | 09.01.2020 | 122

LITTLE CEDAR AVIATOR 503X  
WHR SONNY 8114  
NPS ROSES RIDER 031 ET  
SULL RIGHT DIRECTION ET  
SULL DREAM ONLY 7188E ET  
SS DREAM LADY 161 ET

BEPD 4.1

WEPD 53

YEPD 84

MEPD 28

LOT 19A - Bred to Reverence; due 03.09.2023.

LOT 19B - Bred to Reverence; due 03.13.2023.

These two young females are royally bred and young and just entering their prime producing years. They are out of a full sister to Dreammakers mother and sired by Aviator. These genetics are extremely hot and should be extremely sought after.



Dam of Lot 19A & 19B ...  
SULL Dream Only 7188E, dam of Lots 19A & 19B.

19C

STEER 377

Steer | Pending | Horned | Black | 04.04.2023 | 377



PENDING (MAINE-ANJOU)

ONLY KNIGHT ET

SULL RED KNIGHT 2030ET

SULL DREAM ONLY 7188E ET

ShorthornPlus/ MaineTainer

SHORTHORN

SHORTHORN

SHORTHORN

SHORTHORN

SHORTHORN

SHORTHORN

SHORTHORN

SHORTHORN

SHORTHORN

SHORTHORN

SHORTHORN

MARGIE FAMILY

20

CF S/F MARGIE 860 AV X ET

Bred | \*x4271882 | Polled | RWM | 02.24.2018 | 860

WHR SONNY 8114

BEPD 3.3

LITTLE CEDAR AVIATOR 503X

WEPD 53

NPS ROSES RIDER 031 ET

YEPD 81

FREE K-KIM HOT COMMODITY

MEPD 22

CF HHF MARGIE 2106 HC X ET

CF MARGIE 9114 SOL ET

Bred to Payweight; due 04.15.2023.

This is a full sister to Upperhand and former successful show heifer for Cole Whisman. This female milk's well and transmits quality and growth to her progeny. We have sent her last two bull calves both to sell at Jungles and one was our top seller there. Her mating to Payweight should be awesome.



20A

CF MARGIE 3109 CINCH X

Heifer | \*x4359107 | Polled | Roan | 05.13.2023 | 3109

SASKVALLEY OUTLAW 173Z

BEPD 2.1

JSF KANE CINCH 61H

WEPD 55

AA KANE RED REBA 613E

YEPD 83

LITTLE CEDAR AVIATOR 503X

MEPD 26

CF CF S/F MARGIE 860 AV X ET

CF HHF MARGIE 2106 HC X ET

This is a very skeletally extended, beautifully designed female that is going to do nothing but explode between now and sale time. We think she could develop into something very special.





21A

CF S/F MARGIE 591 RR X ET

Bred | \*x4289664 | Polled | Red | 04.27.2015 | 591

SULL RED REWARD 9321

CF HHF MARGIE 2106 HC X ET

TEGM RED ADVANTAGE 100T

MCV MARGIE MILLION 503Q

FREE K-KIM HOT COMMODITY

CF MARGIE 9114 SOL ET

BEPD 0.4

WEPD 46

YEPD 68

MEPD 22

Bred to Payweight; due 04.01.2024.

This a full sister to Ultimate Reward and is a very well-made brood cow. This female is sound on her feet and legs, and still possesses a very nice functional udder. This female’s mating to Payweight could be absolutely amazing.



21B

CF MARGIE 284 SON X ET

Bred | \*x4359060 | Polled | Roan | 04.04.2022 | 284

WHR SONNY 8114

CF HHF MARGIE 2106 HC X ET

CF TRUMP X

WR4 RODEO CUMBERLAND 3R52

FREE K-KIM HOT COMMODITY

CF MARGIE 9114 SOL ET

BEPD 3.0

WEPD 44

YEPD 68

MEPD 18

Bred to CF Cinch; due 03.07.2024.

We really like this female and feel she will be one of the most sought after bred’s in the sale. She has the right build and has a really cool old school pedigree. This one possesses the color and hair to raise the high selling kind. She matches very well with Cinch.



21C

CF MARGIE 289 SOL X ET

Heifer | \*x4359061 | Polled | RWM | 04.17.2022 | 289

CF SOLUTION X ET

CF HHF MARGIE 2106 HC X ET

CF TRUMP X

NPS DESERT ROSE 004

FREE K-KIM HOT COMMODITY

CF MARGIE 9114 SOL ET

BEPD 3.4

WEPD 58

YEPD 89

MEPD 18

Bred to Cinch; due 03.06.2023 Donation heifer

The Shorthorn Junior Nationals is known across the show cattle industry as being absolutely second to none. We want to do our part in helping provide the funding and allow our great staff to keep making our Junior Nationals the best in the business. We proudly are donating this female as part of the Shorthorn Royal Society.

22

CF MARGIE 271 SD ET

Bred | \*4359059 | Horned | Roan | 03.19.2022 | 271

STUDER'S TAYLOR MADE 7Y

BEPD 3.4

BYLAND SOGGY DOG 7TM73

WEPD 63

BYLAND CINDY BEAUTY 5M48

YEPD 103

CF MARGIE 9114 SOL ET

MEPD 18

CF SOLUTION X ET

CF MODOC MARGIE 523 TPX ET

Bred to Cinch; due 02.01.2024.

I know this is one of Kyle's favorite breds. She not only offers a little different pedigree, but she also is a stout, rugged made female that reads with longevity and function for the long haul. A Soggy Dog bred to Cinch could result in great revenue whether it is a bull or heifer.



MARGIE

Champions



CF CSF Margie 830, Grand Champion Female, '19 NAILE Junior & Open and '20 NWSS, Shown by Mark Inskeep

CF CSF Margie 611 HC, Reserve Grand Champion Female, '17 NJSS and Reserve Grand Champion Female, '17 NAILE Shown by Mark Inskeep



CF CSF Margie 575, Grand Champion Female, '16 NJSS & '17 NWSS Shown by David Smith



CF Margie 1119, '22 NAILE and NJSS Division Champion, Shown by Maddox Reedy

CF CSF Margie 820, Grand Champion Female, '19 Keystone; Division Champion '19 NWSS & FWSS; Reserve Division, '20 NWSS, Shown by Cornerstone Farms



CF Margie 2130, '23 NJSS Third Overall Division Champion, Shown by Maddox Reedy

# MARGIE FAMILY



23

## J-F MARGIE 2175 MO

Bred | \*x4336586 | Polled | Roan | 09.20.2021 | 2175

J-F J-F MOTION 1828 S ET	CF SOLUTION X ET	BEPD 2.6
	SULL MONA'S MASTERPIECE	WEPD 46
	FREE K-KIM HOT COMMODITY	YEPD 71
CF HHF MARGIE 715 HC X ET	CF MARGIE 9114 SOL ET	MEPD 20

Bred to Cinch; due 01.11.2024.

We truly appreciate the Jester family not only for their support of our program, but also the kind of people they are and how they function as a production agriculture family. This big stout powerhouse of a female is blessed with the best of our genetics on both the top and bottom side of her pedigree. She should mate very well to the very popular Cinch bull and have you a return on your investment early in the year.

24

## BF ROBIN 457

Bred | \*4344820 | Horned | Roan | 02.14.2022 | 457

JSF HOT WIRE 70A	LEVELDALE RIGHTEOUS 084 ET	BEPD 0.5
	JSF ADELAIDE 2R	WEPD 46
	CF CF S/F ULTIMATE REWARD ET	YEPD 63
KEVINS ROBIN	CF CF HHF MARGIE 799 HC X ET	MEPD 19

Bred to Cinch; due 02.16.2024.

This is a very well made complete young female. For those of you that focus on raising cattle geared towards the genomic side of things study this female in terms of her calving ease direct and the rest of her balanced genetic profile. She offers so much outcross and diversity in her pedigree that she could definitely appeal to a completely different set of clientele.

25

## CF MARGIE 285 CINCH X

Bred | \*x4359063 | Polled | Red | 04.26.2022 | 285

JSF KANE CINCH 61H	SASKVALLEY OUTLAW 173Z	BEPD 1.2
	AA KANE RED REBA 613E	WEPD 53
	LEVELDALE BOARDWALK 530C	YEPD 80
HCC HCC MARGIE 611 0402 ET	CF CSF MARGIE 611 HC ET	MEPD 23

Bred to Ultimate Reward; due 02.01.2024.

Here is another female that should spark the interest of fellow Shorthorn breeders focused on producing bulls and outcross females. This female is a Cinch out a Boardwalk bred to Ultimate Reward. She is a very big bodied, easy fleshing female that could survive anywhere.

26

## STEER 335

Steer | Pending | Horned | White | 02.12.2023 | 335

FSF PERFECTION	FSF NEAR PERFECT
	FSF SIERRA CRYSTAL
	FREE K-KIM HOT COMMODITY
CF CSF MARGIE 885	CF MARGIE 119 SOL X ET

# DEMI FAMILY

27

## CF DEMI 371 PRIMO X ET

Heifer | \*xar4359109 | Polled | Black | 03.28.2023 | 371

COLBURN PRIMO	DAMERON FIRST CLASS	BEPD 3.7
	SILVEIRAS SARAS DREAM 1339	WEPD 61
CF CSF DEMI 650 SOL ET	CF SOLUTION X ET	YEPD 92
	WHR LS DEMI 8931 ET	MEPD 15

This is a full sister to the Grand Champion ShorthornPlus female at this years Junior National. Samantha VanVorhis showed another full sister that was top five a Junior Nationals and Reserve Grand at Cattleman's Congress.

This young lady got off to a slow start because she opted to come out upside down and backwards, and spent a while nursing a bottle. She is really catching up now and thriving. This female is extremely striking and is blessed with a very nice coat of hair.



27A

## CF NB DEMI 257 BW X ET

Bred | \*x4359233 | Polled | Roan | 03.06.2022 | 257

LEVELDALE BOARDWALK 530C	STUDER'S TAYLOR MADE 7Y	BEPD 3.9
	LEVELDALE BLOSSOM 230Z	WEPD 54
CF CSF DEMI 650 SOL ET	CF SOLUTION X ET	YEPD 82
	WHR LS DEMI 8931 ET	MEPD 17

Bred to Cinch; due 02.01.2024.

Demi 650 was one of the most popular champions we have had the year she won in Denver. This female has the same eye appealing striking pose from the side. A Boardwalk female bred to Cinch offers pedigree options going further.



CF NB Demi 21, '23 NJSS  
Grand Champion ShorthornPlus  
Female, Shown by Grady McGrew

# DEMI

Champions



CF CSF Demi 650, '18 NWSS  
Junior & Open ShowGrand  
Champion Female,  
Shown by Jacob Nikkel



CF NB Demi 024, '22 Cattleman's Congress  
Reserve Grand Champion ShorthornPlus  
Female, Shown by Samantha VanVorhis



CF NB Demi 250,  
'22 NAILE Division  
Champion and '23  
Cattleman's Congress  
Class Winner, Shown by  
Karaline Schuman



30

**CF PC PROVEN QUEEN 399 EV X ET**

Heifer | \*xar4359110 | Polled | Blue Roan | 05.01.2023 | 399

CSF EVOLUTION HC

FREE K-KIM HOT COMMODITY

BEPD 1

CF BOY CAROLINE 210 ET

WEPD 53

DAMERON FIRST CLASS

YEPD 77

DAMERON PROVEN QUEEN 333

MEPD 15

P V F PROVEN QUEEN 602 ET

This is a full sister to "Blue Cheese," Piper's third overall Bred and Owned Champion at Junior Nationals this year. We feel this female has a lot of the same attributes, but with more size and performance. Her mother is one of our top Angus donor cows. This heifer is by far the most ready of all the heifers her age and could be very hard to handle in Louisville this Fall.



CF Provern Queen 2125, '23 NJSS, Third Overall Champin B&amp;O ShorthornPlus

**BRED FEMALES**

31

**CF CSF CHERRI 036 X ET**

Bred | \*x4305128 | Polled | Roan | 02.14.2020 | 036

CSF CSF BACKDRAFT 703 RR ET

SULL RED REWARD 9321

BEPD 2.9

WHR LS DEMI 8931 ET

WEPD 45

SULL RIGHT DIRECTION ET

YEPD 73

SULL RIGHT CHERRI 3808 ET

MEPD 25

SULL CHERRI 205 -2 ET

Bred to Upper Hand; due 01.27.2024.

This female was a very successful show heifer herself for the Wickard Family. She offers a tremendous amount of stoutness and ruggedness. Her mating to Upper Hand will combine The Cherri, Demi, and Margie cow families together. I think this female will impress you.



32

**DFF CUMBERLAND ET**

Bred | \*x4309285 | Polled | Roan | 03.23.2020 | 30

CSF EVOLUTION HC

FREE K-KIM HOT COMMODITY

BEPD 3.7

CF BOY CAROLINE 210 ET

WEPD 53

CF SOLUTION X ET

YEPD 79

CF CUMBERLAND 024 SOL X ET

MEPD 16

WHR CUMBERLAND 4124 ET

Bred to Payweight SEXED SEMEN; due 02.01.2024.

This is a really nice made well-bred female. She is the lone representative of the Cumberland cow family in this sale that has been so successful for us over the years. I think her mating to Payweight is a near perfect match in terms of phenotype, and she is going to have a heifer calf.



# BRED FEMALES



## 33

### SFF REVIVAL 008 SOL ET

Bred | \*4309137 | Horned | RWM | 01.06.2020 | 008H

CF SOLUTION X ET	CF TRUMP X	BEPD 5.5
	NPS DESERT ROSE 004	WEPD 60
	DF CLOUD 9	YEPD 94
CF REVIVAL 3115 SOL X E ET	SS REVIVAL 684 ET	MEPD 19

Bred to Cinch; due 11.2023.

This female's mother was an extremely successful show heifer for Miller Smith. I purchased this female from the Smith family because I liked her attractiveness and structural angles. This is a good genetic package that is due to calve this fall to the very popular Cinch.



## 34

### BF ROSEMARY 453

Bred | \*4344766 | Horned | R&W | 02.18.2022 | 453

CF FLEX	CF SOLUTION X ET	BEPD 6.4
	SNOWHILL RUBY ET	WEPD 50
	LITTLE CEDAR AVIATOR 503X	YEPD 82
CF CF ROSEMARY 848 RK X ET	SULL RED ROSEMARY -1 ET CL	MEPD 22

Bred to Cinch; due 02.01.2024

The Bishop family were very good customers of ours for many years and remain great friends. Bob's Grandson, Kevin Hesser is doing a really nice job taking the heifers they purchased and breeding good quality livestock. This female is out of a Red Rosemary daughter they purchased from us and CF Flex. This heifer has extra size and length and should be strong contributor to your herd for many years to come.



## 35

### CF COUNTESS 288 UR X

Bred | \*x4359062 | Polled | Red | 04.16.2022 | 288

CF CF S/F ULTIMATE REWARD ET	SULL RED REWARD 9321	BEPD 1.5
	CF HHF MARGIE 2106 HC X ET	WEPD 42
	CF TRUMP X	YEPD 64
CF CF COUNTESS 784 TP X ET	SULL RED COUNTESS 8007 ET	MEPD 20

Bred to Cinch; due 02.01.2024.

This is a very attractively designed Ultimate Reward daughter that should really click with Cinch. The quality genetics and proven calving ease is bred in with her mating to Cinch.

36

CF VERONICA 223 TP ET

Bred | Pending | Polled | Black | 02.02.2023 | 223

	STEVENSON TURNING POINT	BEPD 1.5
CONLEY TURNING POINT 8087	SILVEIRAS S SIS SANDY 2355	WEPD 42
	CF TRUMP X	YEPD 64
CF SOLUTION X ET	SBF VERONICA 92Y	MEPD 20

Bred to Cinch; due 02.01.2024.

Phenotypically this is one of the most impressive bred heifers in the Sale. She is sired by our Conley Turning Point AKA “CTP,” which is also the sire of Pipers Reserve Champion Bred and Owned Plus heifer at Junior Nationals. The CTP bull has several daughters we have retained, and they are amazing females that are sound and milk very well.



SEMEN

37A, B & C

CF PAYWEIGHT X ET

Bull | \*s43293601 | Scurred | Roan | 03.11.2021

BYLAND FLASH 9U106	STUDER'S UNIVERSAL 10B	BEPD 3.8
	BYLAND CINDY BEAUTY 5M106	WEPD 72
	JSF MARQUIS 127X	YEPD 110
SULL CRYSTAL'S LADY 6265D ET	SULL LADY CRYSTAL 434P-1 ET	MEPD 28

Selling 3 packages of 3 Units of SEXED HEIFER semen.



38A, B & C

CF S/F UPPER HAND X ET

Bull | \*x4276827 | Polled | RWM | 03.05.2018

LITTLE CEDAR AVIATOR 503X	WHR SONNY 8114	BEPD 2.0
	NPS ROSES RIDER 031 ET	WEPD 46
	FREE K-KIM HOT COMMODITY	YEPD 72
CF HHF MARGIE 2106 HC X ET	CF MARGIE 9114 SOL ET	MEPD 20

Selling 3 packages of 3 Units of SEXED HEIFER semen.



39A, B & C

JSF KANE CINCH 61H

Bull | \*x4313477 | Polled | Roan | 02.25.2020

SASKVALLEY OUTLAW 173Z	SASKVALLEY INNOVATION 131X	BEPD 0.9
	STAR P JODY ROSE 5X	WEPD 56
	KANE CAPTAIN 10B	YEPD 85
KANE RED REBA 613E	KANE LADY REWARD 613C	MEPD 30

Selling 3 packages of 3 Units of Conventional semen.



# CONGRESS NWSS 8 Years



**CF CRYSTAL LUCY 230**  
'23 Grand Champion Female, Open Show  
... shown by Paige Wickard



**CF CSF DREAM LADY 140**  
'23 Reserve Grand Champion Female, Open Show  
... shown by Miller Smith



**CF KLS DREAM ON 221**  
'23 Grand Champion ShorthornPlus Female,  
Open Show ... shown by Houston Ferree



**CF KLS DREAM ON 221**  
'23 Grand Champion ShorthornPlus Female,  
Junior Show ... shown by Houston Ferree



**CF MONA LISA PRIMO 115X**  
'22 Grand Champion ShorthornPlus Female,  
Open Show ... shown by Houston Ferree



**CF CSF DREAM LADY 140**  
'22 Grand Champion Female,  
Open Show ... shown by Miller Smith



**CF MONA LISA 136**  
'22 Grand Champion ShorthornPlus Female,  
Junior Show ... shown by Shyan Bennett



**CF CSF DREAM LADY 140**  
'22 Grand Champion Female,  
Junior Shows ... shown by Miller Smith



**CF NB DEMI 024**  
'22 Reserve Grand Champion ShorthornPlus  
Female, Junior Show ...  
shown by Samantha Van Vorhis



**CF CSF CRYSTALS SWAN 015**  
'21 Grand Champion Female, Junior Show ...  
shown by Houston Ferree



**CF SUNFLOWER 965 UR**  
'21 Grand Champion Female, Junior Show ...  
shown by Makenzie Laughery



**CF CSF MONA LISA 934**  
'21 Grand Champion ShorthornPlus Female ...  
shown by Samantha VanVorhis



**CF CSF MARGIE 830**  
'20 Grand Champion Female, Open Show ...  
shown by Mark Inskeep



**CF V8 MONA LISA REWARD 708**  
'19 Grand Champion Female, Junior Show ...  
shown by Ryan Wickard



**CF V8 MONA LISA REWARD 708**  
'19 Grand Champion Female, Open Show ...  
shown by Ryan Wickard



**CF CSF DEMI 650 SOL**  
'18 Grand Champion Female, Open Show ...  
shown by Jacob Nikkel



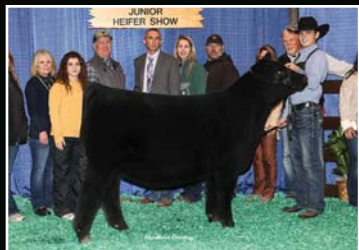
**CF CSF DEMI 650 SOL**  
'18 Grand Champion Female, Junior Show ...  
shown by Jacob Nikkel



**CF CSF DEMI 6100**  
'18 Reserve Grand Champion Female, Open Show ...  
shown by Claire Trennephol



**CF CSF MARGIE 575**  
'17 Grand Champion Female, Junior Show ...  
shown by David Smith



**CF KLS DREAM ON 221**  
'22 Grand Champion ShorthornPlus,  
Open Show ... shown by Houston Ferree



**CF CSF DREAM LADY 135**  
'22 Reserve Grand Champion Female, Open Show ...  
shown by Skyler Ward



**CF MONA LISA OP**  
'22 Grand Champion ShorthornPlus, Open Show ...  
shown by Samantha VanVoris

# NAILE

8 Years



**CF MONA LISA OP**  
'22 Reserve Grand Champion ShorthornPlus,  
Junior Show ... shown by Samantha VanVoris



**CF CSF DREAM LADY 140**  
'21 Reserve Grand Champion Female, Junior Show  
... shown by Miller Smith



**CF CRYSTALS LUCY 073**  
'21 Supreme Champion Shorthorn  
and Grand Champion Female, Open Show  
... shown by Reed Schumacher



**CF MONA LISA PRIMO 115**  
'21 Grand Champion ShorthornPlus,  
Junior Show ... shown by Houston Ferree



**CF MONA LISA PRIMO 115**  
'21 Grand Champion ShorthornPlus,  
Open Show ... shown by Houston Ferree



**CF CRYSTALS LUCY 073**  
'21 Grand Champion Shorthorn Female  
and Fifth Overall Supreme Champion Female, Junior  
Show ... shown by Reed Schumacher



**CF HHF MARGIE**  
'20 Grand Champion Female, Open Show ...  
shown by Houston Ferree



**CF CSF MONA LISA PRIMO**  
'20 Grand Champion ShorthornPlus, Junior & Open  
Show ... shown by Samantha VanVoris



**CF HHF MARGIE**  
'20 Grand Champion Female Junior Show ...  
shown by Houston Ferree



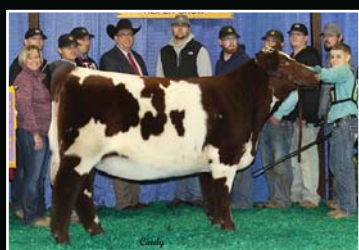
**CF CSF MONA LISA PRIMO**  
'20 Grand Champion ShorthornPlus,  
Junior Show ... shown by Samantha VanVoris



**CF CSF CRYSTAL SWAN 015**  
'19 Grand Champion Female, Junior Show ... shown by  
Mark Inskeep



**CF CSF CRYSTAL SWAN 015**  
'19 Grand Champion Female, Open Show ...  
shown by Mark Inskeep



**CF V8 MONA LISA REWARD 782**  
'18 Reserve Grand Champion Female, Junior Show ...  
shown by Ryan Wickard



**CF CSF MARGIE 611**  
'17 Reserve Grand Champion Female, Junior Show ...  
shown by Mark Inskeep



**CF CSF DREAM LADY 78**  
'17 Reserve Grand Champion Female, Open Show ...  
shown by Cornerstone Farms



**CF V8 MONA LISA SMILES 526**  
'16 Reserve Grand Champion Female,  
Open Show ... shown by John Reasor

# 8 YEARS

## Junior National Champions



**CF NB DEMI 21**

'23 Grand Champion ShorthornPlus Female ...  
shown by Grady McGrew



**CF KLS DREAM ON 221**

'23 Third Overall Champion ShorthornPlus  
Female ... shown by Houston Ferree



**CF JOLENE 1223**

'23 Fourth Overall Champion ShorthornPlus  
Female ... shown by Samantha VanVorhis



**CF MONA LISA 2117**

'23 Fifth Overall Champion Shorthorn Female ...  
shown by Audrey Robertson



**CF MONA LIZA 148**

'22 Reserve Grand Champion Female  
... shown by Keegan McGrew



**CF MONA LISA 0121**

'22 Third Overall Champion Female ... shown by  
Carter Meyer



**CF MONA LISA PRIMO 115**

'22 Reserve Grand ShorthornPlus Female ...  
shown by Houston Ferree



**CF MONA LISA 136**

'22 Fourth Overall ShorthornPlus Female ...  
shown by Shyan Bennett



**CF CSF CRYSTALS SWAN 015**

'21 Grand Champion Female  
... shown by Houston Ferree



**CF MAX ROSA 025**

'21 Fourth Overall Champion Female  
... shown by Kane Aegerter



**CF CSF MARGIE 093**

'21 Fifth Overall Champion Female ... shown by  
Keegan McGrew



**CF NM DEMI 024**

Fourth Overall ShorthornPlus Female ... shown by  
Samantha VanVorhis



**CF CSF AUGUSTA PRIDE 8147**

'20 Grand Champion Female ...  
shown by Cole Whisman



**CF CSF MARGIE 830**

'19 Fifth Overall Champion Female  
... shown by Mark Inskeep



**CF MAX ROSA 811**

'19 Third Overall Champion Female  
... shown by Ryan Wickard



**CF CSF MAX ROSA 725**

'18 Fifth Overall Champion Female  
... shown by Sara Sullivan



**CF V8 MONA LISA REWARD 780**

'18 Grand Champion Female  
shown by Miller Smith



**CF CSF DEMI 650 SOL**

'17 Fourth Overall Champion Female  
shown by Jacob Nikkel



**CF MARGIE 611H**

'17 Reserve Grand Champion Female  
shown by Mark Inskeep



**CF CSF MARGIE 575**

'16 Grand Champion Female  
shown by David Smith

# 2022-2023 Champions



## CF NB DEMI 21 PRIMO X ET

- Grand Champion ShorthornPlus Female, 2023 National Junior Shorthorn Show
- Reserve Grand Champion ShorthornPlus Female, 2022 Keystone
- Congratulations Grady McGrew



## CF MONA LISA 2112 UH

- Champion Female, 2022 NAILE Open Show
- Reserve Division Champion, 2022 NAILE Jr Show
- Division Champion, 2022 Keystone Autumn Classic
- Congratulations Mikayla Sugg



## CF MONA LISA 2105 UH X ET

- Reserve Division Champion, 2022 Keystone
- Congratulations Iva Mummert



## CF MONA LISA 1131

- Reserve Division Champion, 2022 NAILE Jr Show
- Reserve Division Champion, 2023 NJSS
- Reserve Division Champion, 2023 Cattlemen's Congress
- Congratulations Lindsey Jester



## CF MONA LISA 255 OP X ET

- Division Champion, 2023 Cattlemen's Congress Junior Show
- Champion ShorthornPlus Female, 2023 Kentucky Beef Expo
- Congratulations Mark Inskeep



## CF NB DEMI 250 RB X ET

- Division Champion, 2022 NAILE
- Class Winner, 2023 Cattlemen's Congress
- Congratulations Karoline Schuman



## CF MAX ROSA 286 EV X ET

- Champion Shorthorn Heifer, 2023 Kentucky Beef Expo
- Congratulations Lane McCall



## CF CUMBERLAND 175

- Class Winner, 2023 NJSS
- Congratulations Jozie Beiser



## CF CUMBERLAND 25 CINCH

- Champion Shorthorn Heifer, '23 Illinois Beef Expo, Ring A & B
- Champion Shorthorn Heifer, '23 WIU Change of Pace, Ring A
- Champion Shorthorn, '23 Saluki Showdown
- Champion Shorthorn, '23 Red Hill Cattle Classic
- Champion Shorthorn, '23 Prairie Beef Showcase
- Champion Shorthorn & Fifth Overall Heifer, '23 James Flach Memorial Day Show
- Reserve Champion Heifer, '23 Illinois Preview
- Congratulations Maddox Reedy



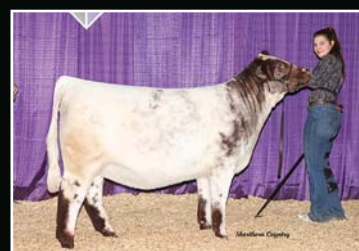
## CF CSF CHERRI HC X ET

- Champion Shorthorn Heifer, 2023 Ohio AGR, Ring 1 & 2
- Champion Shorthorn Heifer, 2023 Cupid Classic, Ring 1 & 2
- Reserve Shorthorn Heifer, 2023 Cattle Battle, Ring 1 & 2
- Reserve Champion Shorthorn, 2023 King of the Ridge, Ring 1 & 2
- Class Winner, 2022 NAILE
- Congratulations Amanda Annette



## CF CSF MONA LISA 196 HC

- Champion Shorthorn Heifer, 2022 Indiana State Fair
- Reserve Division Champion, 2022 NAILE
- Reserve Division Champion, 2022 NJSS
- Reserve Division Champion, 2023 Cattlemen's Congress
- Congratulations Westin Ward



## CF NB DEMI 1130 II

- Reserve Division Champion, 2022 NAILE Jr & Open Show
- Reserve Division Champion, 2023 Cattlemen's Congress Open Show
- Congratulations Hailey Jester

# 2022-2023 Champions



**CF MONA LISA 222 II ET**

- Reserve Division Champion, 2023 NAILE Jr Show
- Reserve Division Champion, 2023 Cattlemen's Congress Open Show
- Congratulations Michael Frisbie



**CF CSF DREAM LADY 135 EV**

- Reserve Grand Champion Female, 2022 NAILE Open Show
- Division Champion, 2022 American Royal
- Congratulations Skylar Ward



**CF CSF MARGIE 1113 BD X ET**

- Division Champion, 2023 Fort Worth Stock Show
- Class Winner, 2023 NJSS
- Congratulations Rylie Bivins



**CF MONA LISA 1121 FLASH X**

- Division Champion, 2022 NAILE Open Show
- Division Champion, 2023 NJSS
- Division Champion, 2023 Cattlemen's Congress
- Congratulations Carter Wickard



**CF MAX ROSA 245 RK X ET**

- Division Champion, 2023 Fort Worth Stock Show
- Congratulations Carter Meyer



**CF MONA LISA 240 KK ET**

- Third High Point Heifer Ohio Best Program
- Reserve Champion Heifer, Cupid Class & Mardi Gras Masquerade
- Congratulations Jozie Beiser



**CF MONA LISA 282 PRIMO**

- Reserve Division Champion, 2023 NJSS
- Champion ShorthornPlus Heifer, 2023 Purdue AGR
- Reserve ShorthornPlus Heifer, 2023 Hoosier Beef Congress
- Congratulations Ryan Wickard



**CF CRYSTAL LADY 290 UR X**

- Division Champion, 2023 Cattlemen's Congress Junior Show
- Class Winner, 2023 NJSS
- Congratulations Mark Inskip



**CF VERONICA 212 PRIMO X ET**

- Reserve Division Champion, '23 VCCP Second Wind Fall Classic, Ring A & B
- Third Overall Champion ShorthornPlus, '23 Southeast PA Classic, Ring A
- Reserve Champion ShorthornPlus Heifer, '23 Eastern Regional Show
- Congratulations Charlotte Holland



**CF MONA LISA 238 OP X ET**

- Champion ShorthornPlus Heifer, 2023 Ohio Beef Expo
- Reserve Champion ShorthornPlus Heifer, 2023 Ohio State Fair Open and Junior Show
- Congratulations Samantha VanVorhis



**CF MARGIE 2130 EV ET**

- Third Overall Division Champion, 2023 NJSS
- Congratulations Maddox Reedy



**CF MONA LISA 1223 OP ET**

- Reserve Grand Champion Shorthorn Heifer, 2022 Keystone International Open Show
- Third Overall Division Champion, 2023 NJSS
- Congratulations Baylor Cowden

# '22 AMERICAN ANGUS ASSOC. *Show Heifer of the Year* SSF LADY 5030

- 2021 Atlantic National Junior Show Grand Champion Female
- 2021 Atlantic National Open Show Grand Champion Female
- 2021 All-American Breeders' Futurity Junior Show Grand Champion Female
- 2021 All-American Breeders' Futurity Open show Grand Champion Female
- 2021 American Royal Junior Show Grand Champion Female
- 2021 NAILE Junior Show Reserve Grand Champion Female

- 2021 NAILE Open Show Reserve Grand Champion Female
- 2022 Cattlemen's Congress Junior Show Grand Champion Female
- 2022 Fort Worth Stock Show Reserve Grand Champion Female
- 2022 All-American Breeders' Futurity Supreme Champion Female
- 2022 NJAS Grand Champion Cow/ Calf Pair

Congratulations Houston Ferree



# OUR SHOW HEIFERS *Make Cows!*



## SSF LADY 5030

- '21 Atlantic National Junior & Open Shows Grand Champion Female
  - '21 All-American Breeders' Futurity Junior & Open Show Grand Champion Female
  - '21 American Royal Junior Show Grand Champion Female
  - '21 NAILE Junior & Open Show Reserve Grand Champion Female
  - '22 Cattlemen's Congress Junior Show Grand Champion Female
  - '22 Fort Worth Stock Show Reserve Grand Champion Female
  - '22 All-American Breeders' Futurity Supreme Champion Female
  - '22 NJAS Grand Champion Cow/ Calf Pair
- Congratulations Houston Ferree



## SSF PROVEN QUEEN 5029

- '20 NJAS Division Champion
  - '20 Cattlemen's Classic Division Champion
  - '20 American Royal Division Champion
  - '20 NWSS Division Champion
  - '20 Atlantic National Division Champion
  - '20 NAILE Reserve Division Champion
  - '21 Atlantic Nationals Champion Cow/ Calf Pair
- Congratulations Sara Sullivan



## SSF BARDOT 3268

- '19 NJAS Third Overall Grand Champion Female
  - '19 NWSS Reserve Division Champion
  - '20 NJAS Reserve Champion Cow/ Calf Pair
- Congratulations Jake Nikkel



## SSF DS LADY 2262

- Grand Champion Female, '23 Atlantic National Junior Show
  - Third Overall Champion Female, '23 Atlantic National Open Show
  - Grand and Supreme Overall Female, '23 All-American Angus Breeders' Futurity Jr show
  - Division Champion, '23 NJAS
- Congratulations Kelly Spicer



## SSF ENVIOUS BLACKBIRD 5022

- Fourth Overall Champion Female, '23 Atlantic Nationals Open Show & Division Champion, Jr Show
  - Third Overall Champion Female, '23 All-American Angus Breeders' Futurity Open Show
  - Division Champion, '23 All-American Angus Breeders' Futurity Junior Show
  - Division Champion, '23 NJAS
- Congratulations Samantha Van Vorhis



## SSF LADY 3102

- Division Champion Female, KILE
  - Third Overall Angus Female, PAYLE
  - Third Overall Angus Female, Southeast PA Jackpot, Ring A
  - Calf Champion, PA Farm Show
  - Champion Angus & Third Overall Female, Black Tie Affair
- Congratulations Karli Berkeimer



## HAGG BLACK CROW

- Grand Champion Angus Bull, '22 NAILE
- Owned with Winegardner/ Klingaman & Haggard Angus



## SSF PROVEN QUEEN 5182

- Reserve Champion Heifer, Ohio Angus Preview Show
- Congratulations Ray Beneker



## SSF DS LADY 4191

- Reserve Grand Champion Female, '22 Keystone
  - Reserve Division Champion, '22 American Royal
  - Reserve Champion Angus Female & Fifth Overall Champion, '22 Ohio Beef Expo
- Congratulations Samantha Van Vorhis



## SSF SANDY 0252

- Reserve Grand Champion Bred & Owned Female, '23 All-American Angus Breeders Futurity
  - Fourth Overall Bred & Owned Female, '23 Atlantic National
- Congratulations Piper Cates

# LADY IMPRESSION FAMILY



LOT 40A



LOT 40B

40A

SSF DS LADY 1253

Heifer | +20698759 | Polled | Black | 01.25.2023 | 1253

SSF ON POINT 4028	COLBURN PRIMO 5153	BEPD 2.5
	PLUM CREEK ANNIE LU 4472	WEPD 53
	DAMERON FIRST IMPRESSION	YEPD 90
SSF LADY IMPRESSION O265		MEPD 19
	COPPER CRK LADY LUT 1120	

The Lady Impression cow continues to consistently produce at the very highest level. Our On Point calves continue to be my favorite sire group because they are so flawlessly designed in their movement and structural design. This female is very broody all the while being stout and genuine all the way through and can get out and go with any of them. This is a nationally competitive female.

40B

SSF DS LADY 3023

Heifer | 20698761 | Polled | Black | 03.02.2023 | 3023

SSF ON POINT 4028	COLBURN PRIMO 5153	BEPD 2.5
	PLUM CREEK ANNIE LU	WEPD 53
	DAMERON FIRST IMPRESSION	YEPD 90
SSF LADY IMPRESSION		MEPD 19
	COPPER CRK LADY LUUT 1120	

This one rates pretty darn high with me. She has the same flawless structural design as her sister, but with a touch more size and length. This one can compete at the very highest level and will be hard to fault. She has a very nice hair coat and great feet. Neither the Lady Impression cow nor On Point ever needed their feet trimmed. That is a rarity unfortunately.

# LADY IMPRESSION FAMILY



41

**SSF DS LADY 1183**  
Heifer | +20698758 | Polled | Black | 01.18.2023 | 1183

CONLEY NO LIMIT	EXAR BLUE CHIP 1877B	BEPD 2.6
	SILVEIRAS S SIS SANDY 2355	WEPD 57
	DAMERON FIRST IMPRESSION	YEPD 91
SSF LADY IMPRESSION O265	COPPER CRK LADY LUT 1120	MEPD 19

This is a full sister to the female campaigned last year by Samantha Vanvorhis that was always very competitive. This full sister has the same fault free design but is a touch cleaner and more extended through her front end at this age.

41A

**4 SEXED HEIFER EMBRYOS**  
Selling one package of four Sexed Heifer embryos.

CONLEY NO LIMIT X SSF LADY IMPRESSION O265



42

**SSF DS LADY 2063**  
Heifer | +20698760 | Polled | Black | 02.06.2023 | 2063

BNWZ DIGNITY 8017	PVF INSIGHT 0129	BEPD 1.9
	CCC SARA'S DREAM 5116	WEPD 57
	DAMERON FIRST IMPRESSION	YEPD 97
SSF LADY IMPRESSION O265	COPPER CRK LADY LUT 1120	MEPD 21

The Dignity cattle have steadily been growing in popularity in the breed. There were many folks at Junior Nationals that identified them as their favorite new sire group. This female has a bit more size and skeletal extension than some out of this cow. I think people will like this one.

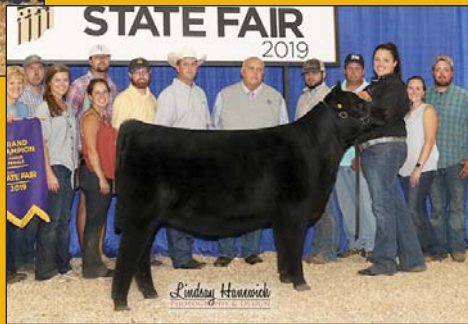
## LADY IMPRESSION Champions



SSF DS Lady 2262, Grand Champion Female, '23 Atlantice National Junior Show; Third Overall Champion Female, '23 Atlantic National Open Show; Grand & Supreme Overall Female, '23 All-American Angus Breeders' Futurity Jr show; Division Champion, '23 NJAS, Shown by Kelly Spicer



SSF LADY 5030, '21 Atlantic National Junior & Open Shows Grand Champion Female; '21 All-American Breeders' Futurity Junior & Open Show Grand Champion Female; '21 American Royal Junior Show Grand Champion Female; '21 NAILE Junior & Open Show Reserve Grand Champion Female; '22 Cattlemen's Congress Junior Show Grand Champion Female; '22 Fort Worth Stock Show Reserve Grand Champion Female; '22 All-American Breeders' Futurity Supreme Champion Female and '22 NJAS Grand Champion Cow/ Calf Pair, Shown by Houston Ferree



SSF Lady 0138, Supreme Champion Female, '19 Indiana State Fair Open Show, Shown by Katie Brock

**43A****SSF FF LADY 3083**

Heifer | +20698762 | Polled | Black | 03.08.2023 | 3083

**43B****SSF LADY 4062**

Bred | +20698764 | Polled | Black | 04.06.2022 | 4062

CONLEY EXPRESS 7211	SMWATCHOUT 482	<u>BEPD</u> 2.8
	DPL SANDY 3040	<u>WEPD</u> 57
	DAMERON FIRST IMPRESSION	<u>YEPP</u> 95
SSF LADY IMPRESSION O265		<u>MEPD</u> 22
	COPPER RK LADY LUT 120	

LOT 43A - This is a full sister to the 5030 female that was Show Heifer of the Year for Houston Ferree. This heifer is wide chested, bold ribbed and shapely from behind. I love the way she is designed out of her hip and hind leg.

LOT 43B - Bred to Conley Turning Point; due February/ March 2024.

This is another full sister to the show heifer of the year 5030. This female is extremely clean and extended up front and has extra muscle shape.

| **LOT 43A****43C****4 SEXED HEIFER EMBRYOS**

Selling one package of four Sexed Heifer embryos.

EXPRESS X SSF LADY IMPRESSION O265

**43D****SSFHAG LADY PRIMO 3213 SDF**

Heifer | +20702970 | Polled | Black | 03.23.2023 | 3213

COLBURN PRIMO 5153	DAMERON FIRST CLASS	<u>BEPD</u> 3.5
	SILVEIRAS SARAS DREAM 1339	<u>WEPD</u> 56
	EXAR LUTTON 1831	<u>YEPP</u> 93
COPPER CRK LADY 1241	CHERRY KNOLL LADY LOLA	<u>MEPD</u> 16

| **LOT 43D**

SSF Lady Impression, Grand Champion Female, '17 Atlantic National, Shown by Kallie Knott



SSF DS Lady 4301, Reserve Grand Champion Female, All-American Angus Breeders Futurity, Shown by Anderson Pender



SSF DS LADY 4191, Reserve Grand Champion Female, Keystone; Reserve Division Champion, American Royal; Reserve Champion Angus Female and Fifth Overall Champion, Ohio Beef Expo, Shown by Samantha Van Vorhis

# LADY IMPRESSION FAMILY



44

**SSF LADY 4302**  
Bred | +20397331 | Polled | Black | 04.30.2022 | 4302

SCC SCH 24 KARAT 838	SCC TRADITION OF 24	<b>BEPD</b> 3.2
	FCF PROVEN QUEEN 419	<b>WEPD</b> 56
	DAMERON FIRST IMPRESSION	<b>YEPD</b> 92
SSF LADY IMPRESSION 0265	COPPER RK LADY LUT 120	<b>MEPD</b> 26

Bred to SEXED HEIFER PVF Surveillance semen; due February 18, 2024

We think this is definitely one of the best quality breds we have ever sold. We actually sold her last year as a show heifer but turns out she stopped being a fan of the blower. We think this one has tremendous generating potential and still looks like she could go straight in the show ring.

# SANDY FAMILY



45

**CONLEY S SIS SANDY 4313**  
Bred | +\*17908018 | Polled | Black | 04.15.2014 | 4313

SILVEIRAS STYLE 9303	GAMBLES HOT ROD	<b>BEPD</b> 4.2
	SILVEIRAS ELBA 2520	<b>WEPD</b> 47
	BC LOOKOUT 7024	<b>YEPD</b> 77
K N C CABIN CREEK SANDY 804	K N C CABIN CREEK SANDY	<b>MEPD</b> 15

Bred to SEXED HEIFER PVF Blacklist semen; due December 1, 2023.

Selling half interest; Conley Cattle and SSF will each retain 1/4 interest. Buyer can double the hammer price and own all of her.

This female was the biggest purchase that Cortney and I had ever made financially when we Purchased half interest in her at Conley's. It was an investment that certainly paid off as her first daughter we sold brought more than twice what we gave for the cow. This female is a very consistent egg producer and has allowed us to build a very nice bank of eggs on her. She looks like an impressive six-year-old female and still breeds AI the first time, every time. We feel the two 24 Karat heifer calves out of her in this sale are absolutely outstanding. She averages six eggs per IVF cycle and did 10 her last time flushed. This female is far from done generating. She is due early with a heifer calf, then you will be off to the races bringing in revenue with her just like we were.



45A

## SSF SANDY 2163

Heifer | +20700178 | Polled | Black | 02.16.2023 | 2163

SCC SCH 24 KARAT 838	SCC TRADITION OF 24	<u>BEPD</u> 4.8
	FCF PROVEN QUEEN 419	<u>WEPD</u> 54
CONLEY S SIS SANDY 4313	SILVEIRAS STYLE 9303	<u>YEPD</u> 88
	K N C CABIN CREEK SANDY	<u>MEPD</u> 21

This one has the extras that are needed and desired in the Angus show arena today. This female is so attractive in her front one third and from the side with tremendous depth of body. She has an incredible coat of hair and she and her sister are as good natured as any heifers in the sale. This one gets noticed first by most time after time.



45B

## SSF SANDY 4093

Heifer | +20700179 | Polled | Black | 04.09.2023 | 4093

SCC SCH 24 KARAT 838	SCC TRADITION OF 24	<u>BEPD</u> 4.8
	FCF PROVEN QUEEN 419	<u>WEPD</u> 54
CONLEY S SIS SANDY 4313	SILVEIRAS STYLE 9303	<u>YEPD</u> 88
	K N C CABIN CREEK SANDY	<u>MEPD</u> 21

This female, like her sister has been a standout since birth. She has the same incredible look that makes her stand out and causes people to take notice. I think it will be interesting to see as we get closer to the sale which of these two sisters' folks like the best as this one matures and catches up. Both of them have quality to spare.



45C

## SSF SANDY N071

Heifer | +20701957 | Polled | Black | 11.07.2021 | N071

EXAR BLUE CHIP 1877B	DAMERON FIRST CLASS	<u>BEPD</u> 4.8
	GREENS PRINCESS 1012	<u>WEPD</u> 60
CONLEY S SIS SANDY 9303	SILVEIRAS STYLE 9303	<u>YEPD</u> 96
	K N C CABIN CREEK SANDY 804	<u>MEPD</u> 14

Bred to SEXED HEIFER PVF Surveillance semen.

This is a powerhouse bred female. This female has always been impressive and shown added stoutness and dimension. She offers a great popular pedigree to go with her quality. Her first calf could reap great rewards.



# SANDY FAMILY



45D

SSF SANDY 2322

Bred | +20698712 | Polled | Black | 02.03.2022 | 2322

5T POWER CHIP 4790	EXAR BLUE CHIP 1877B	BEPD 2.6
	5T MISS WIX 8002	WEPD 54
	SILVEIRAS STYLE 9303	YEPD 87
CONLEY S SIS SANDY 4313	K N C CABIN CREEK SANDY 804	MEPD 17

Bred to SEXED HEIFER PVF Surveillance semen.

This is a very feminine attractive daughter of the popular Power Chip bull. When you go to sell your calves and they stem from the Sandy cow family, it is most certainly an added bonus to buyers.

# NELLIE GIRL FAMILY



46

SSF NELLIE GIRL 3027

Bred | \*18836875 | Polled | Black | 03.02.2017 | 3027

SMA WATCHOUT 482	SILVEIRAS WATCHOUT O514	BEPD 4.8
	2K BEAUTY 961	WEPD 54
	OSU CLASS ACT	YEPD 88
SSF NELLIE GIRL 3105	SCC NELLIE GIRL 980	MEPD 21

Bred to SEXED HEIFER SSF On Point semen; due February 15, 2024.

3027 was one of the first very successful show heifers we produced. Shown by Kallie Knott. She was Reserve Supreme Champion female at the Hoosier Beef Congress, Grand champion Angus Female at the Keystone ROV show, Reserve division champion in Louisville as both a calf and a yearling and was reserve in her division at Junior Nationals. Her first calf commanded \$30,000 and was campaigned very successfully by the Mool family. This female has bred AI to sexed semen every year the first time and usually moves up in calving dates. She has a tremendous udder as well and an easy-going demeanor. She has certainly proven now, with the tremendous heifer calf at side this year, she is definitely a future donor cow.



46A

SSF NELLIE GIRL 3193

Heifer | 20698763 | Polled | Black | 03.19.2023 | 3193

SSF ON POINT 4028	COLBURN PRIMO 5153	BEPD 4.3
	PLUM CREEK ANNIE LU 4472	WEPD 56
SSSF NELLIE GIRL 3027	SMA WATCHOUT 482	YEPD 99
	SSF NELLIE GIRL 3105	MEPD 15

This is the longest necked, best fronted Angus heifer in the offering. She still is very deep and sweeping through her rib cage. This heifer's picture has been used in a lot of our advertising. She is striking.



47

SSF DS NELLIE GIRL 4273

Heifer | 20698495 | Polled | Black | 04.27.2023 | 4273

M C SSF NIGHT SKY 9088	S&R ROUNDTABLE J328	BEPD 3.2
	M C BLACKCAP 6085	WEPD 66
SSF NELLIE GIRL 229	SMA WATCHOUT 482	YEPD 114
	SSF NELLIE GIRL 3105	MEPD 20

This female is bred very similar to the heifer Piper is showing that was Reserve Bred and Owned champion at Angus Futurity and fourth overall at Atlantic Nationals. This heifer is phenomenal in her structure and basic outline. We think this one will only continue to get better with time.



48

SSF LADY N171

Bred | 20309746 | Polled | Black | 11.17.2021 | N171

TOP LINE SENSATIONAL 9001	S A V SENSATION 5615	BEPD 3.2
	TOP LINE LADY 9111	WEPD 66
TOP LINE LADY 7003	DAMERON FIRST CLASS	YEPD 114
	GAMBLES LADY 959	MEPD 20

Bred to Conley Turning Point; due 04.01.2024.

This is an incredibly stout designed and loose made daughter of Sensational. She has so much dimension and width, yet is incredible on her feet and legs.



# SARAS DREAM FAMILY



49

**SILVEIRAS HARAS DREAM 8532**  
Bred | +\*19401226 | Polled | Black | 12.08.2018 | 8532

DAMERON FIRST CLASS	EXAR RS FIRST RATE S903 R3	BEPD 2.6
	DAMERON NORTHERN MISS 3114	WEPD 54
SILVEIRAS SARAS DREAM	SILVEIRAS STYLE 9303	YEPD 87
	EXG SARAS DREAM S609 R3	MEPD 17

Bred to SEXED HEIFER PVF Insight semen; due January 1, 2024.

This is a full sister to Primo and the 5116 donor of Nowatzke's to just name a few. We purchased half interest in this female as lot 1 in Silveiras sale. She has IVF'd very well for us and we have a nice collection of eggs built up. This female will blow you away with her structural integrity and overall functional build. This is a tremendous opportunity to buy a proven donor just entering her prime producing years, with a pedigree stacked with household names.



50

**SSF SARAS DREAM 5033**  
Heifer | +20700156 | Polled | Black | 05.03.2023 | 5033

SCC SCH 24 KARAT 838	SCC TRADITION OF 24	BEPD
	FCF PROVEN QUEEN 419	WEPD
SILVEIRAS HARAS DREAM 8532	DAMERON FIRST CLASS	YEPD
	SILVEIRAS SARAS DREAM	MEPD

We feel very fortunate to have a large collection of eggs in the tank that are full sibs to this fancy young female. This is current, popular genetics at its finest. This heifer has the elegance and quality to withstand a lot of competition.

## GENERAL INFORMATION

*Feeding & Showing Terms:* We pride ourselves in the professional way we exhibit your purchases. Here, at Cates Farms, we employ some of the best fitters in the business at both the farm and the shows. We spare no expenses to exhibit your cattle to ensure your success. The charges below are not designed for us to make money, rather to insure we can continue to offer the best service to you. Each animal that will be located at Cates Farms show barn will be charged \$25/day. Each animal will be charged \$250/day while attending shows with Cates Farms crew. This will cover all expenses while at shows. All animals must be insured while in our care/possession. Any veterinary expense above routine will be owner's obligation. All accounts will be billed monthly.

*Breeding Update/Calving Information:* There will be added information available at the sale site that will list any additions to the catalog information as to new calves born and new breeding information that will occur after the printing of this catalog.

*Half Interest Females:* The owner will own 100% of the animal. Cates Farms will get 1/2 of the embryos from each flush. Semen on all of our bulls will be available. Cost will be split.

*Breeding Guarantee:* All cattle sell under the Standard Breeding Guarantee recommended by the American Shorthorn Association. An exception would be through mishandling either obesity or under nourishment and illegal practices associated with showing the female.

*Registration & Transfer:* All animals sell with completed pedigrees or applications for registration.

# PROVEN QUEEN FAMILY



**51** **SSF PROVEN QUEEN 4193**  
Heifer | +20698494 | Polled | Black | 04.19.2023 | 4193

SCC SCH 24 KARAT 838	SCC TRADITION OF 24	BEPD 4.2
	FCF PROVEN QUEEN 419	WEPD 52
	DAMERON FIRST CLASS	YEPD 85
DAMERON PROVEN QUEEN 333		MEPD 21
PVF PROVEN QUEEN 602		

This Proven Queen cow just continues to produce some of our best every year. This female does so many things right to a very high degree. She is the biggest footed female in the whole offering and has more muscle shape than any other. She has all that ruggedness and power yet is balanced and graceful on the move. This heifer has the parts and pieces to be very special.

## PROVEN QUEEN *Champions*



SSF Proven Queen 3029, Grand Champion Female, '21 Indiana Preview Show, Shown by Skylar Bennet



SSF Proven Queen, Division Champion, '19 NAILE, Shown by Sara Sullivan



SSF Proven Queen 2258, many time Top Five Female and Champion Angus, Shown by Ralieg Doerstler



SSF Proven Queen 5029, Division Champion, '21 Atlantic Nationals, '21 Cattlemen's Classic and '20 NWSS, NJAS and American Royal Shown by Sara Sullivan



# PROVEN QUEEN FAMILY



LOT 52A

52A

**SSF PROVEN QUEEN 3163**  
Heifer | +20701956 | Polled | Black | 03.16.2023 | 3163

52B

**SSF PROVEN QUEEN 9271**  
Bred | +20698765 | Polled | Black | 09.27.2021 | 9271

SILVEIRAS STYLE 9303	GAMBLES HOT ROD	BEPD 2.9
	SILVEIRAS ELBA 2520	WEPD 44
	DAMERON FIRST CLASS	YEPD 74
DAMERON PROVEN QUEEN 333	PVF PROVEN QUEEN 602	MEPD 14

LOT 52B - This is a very extended and beautiful profiling female that is very nice structurally. She should follow nicely in her sisters footsteps

LOT 52B - Bred to SEXED HEIFER PVF Blacklist semen; due January 2, 2024. This bred heifer looks like a brood cow already. She is a big, long, and powerful beast. She is a full sister to so many successful females we have had before her, and her mating to Blacklist sexed semen could produce the highest dollar calf out of any.



LOT 52B

53

**P3CC MAMMA'S GIRL**  
Bred | 20454275 | Polled | Black | 09.12.2021 | 9121

FCF LEVERAGE 641	EXAR BLUE CHIP 1877B	BEPD -
	FCF PROVEN QUEEN 022	WEPD -
	SILVEIRAS STYLE 9303	YEPD -
SSF PROVEN QUEEN 2258	DAMERON PROVEN QUEEN 333	MEPD -

Bred to SEXED HEIFER PVF Surveillance semen.

This female is a double bred Proven Queen and a double bred First Class. There is no other bred heifer in this sale that is easier doing and lower maintenance than this female. She will be a beautiful two-year-old.



LOT 53

54

**P3CC PROVEN QUEEN LOVELY LAD**  
Bred | +20342916 | Polled | Black | 10.08.2021 | 1081

WB PENDLETON 708 PVF SWSN	DAMERON BEST IN CLASS	BEPD 3.7
	WB PVF SF LUCY 4033	WEPD 53
	DAMERON P V F RAPTOR 702	YEPD 90
FCF PROVEN QUEEN 022	FCF SCC PVF PROVEN QUEEN 615	MEPD 26

Bred to Conley Turing Point; due February 16, 2024.

Here is a Pendleton daughter of the very popular 022 donor of Four Corners. We are actually keeping a full sister to this female with hopes she will become our next young donor cow.

# ENVIOUS BLACKBIRD FAMILY

55

SSF ENVIOUS BLACKBIRD 2243

Heifer | +20698711 | Polled | Black | 02.24.2023 | 2243

COLBURN PRIMO 5153	DAMERON FIRST CLASS	BEPD 4.2
	SILVEIRAS SARAS DREAM 1339	WEPD 52
		YEPD 85
	PVF INSIGHT 0129	MEPD 21
EXAR ENVIOUS BLACKBIRD 5983		
EXAR ENVIOUS BLACKBIRD 1760		

This is a full sister to the very popular May heifer that is being shown by Samantha Vanvorhis that just won her division at Junior Nationals. This is probably the most opened up and powerfully built angus heifer in the offering. What I love about her is that even with all that width, her neck attachment is as good as any and she moves off of an incredible hip and hind leg. I have to think this one will be popular.



55A

4 SEXED HEIFER EMBRYOS

Selling one package of four Sexed Heifer embryos.

SSF ON POINT X EXAR ENVIOUS BLACKBIRD 5983

SSF Envous Blackbird 5022, Fourth Overall Champion Female, '23 Atlantic Nationals Open Show & Division Champion, Jr Show; Third Overall Champion Female, '23 All-American Angus Breeders' Futurity Open Show Division Champion, '23 All-American Angus Breeders' Futurity Junior Show; and Division Champion, '23 NJAS, Shown by congratulations Samantha Van Vorhis.



Hagg Black Crow, Grand Champion Angus Bull, '22 NAILE, Owned with Winegardner/ Klingaman & Haggard Angus, and full sib to Lot 55A.

56

MRV BLACKBIRD 0503

Bred | 20704654 | Polled | Black | 05.03.2022 | 0503M

SCC SCH 24 KARAT 838	SCC TRADITION OF 24	BEPD 4.7
	FCF PROVEN QUEEN 419	WEPD 56
	COLBURN PRIMO 5153	YEPD 94
SSF BLACKBIRD 4269	SSF BLACKBIRD HORIZON 3254	MEPD 23

Bred to BMW Mr Driving 80 405H ET (2021 Cattlemen's Congress Grand Champion Main Angus bull); due 03.12.2024.

Here is a 24 Karat out of one of our favorite heifers we have sold, shown successfully by Marcus VanVorhis. Marcus was our first Angus buyer and showman when we were just getting started and his family has stayed loyal to us each and every year. They have assembled a group of Angus cows that anyone would be envious of.



Dam of Lot 56, SSF Blackbird 4269





# Family



Shorthorn Country  
7607 NW Prairie View Rd  
Platte Woods, MO 64151-1544

**FIRST CLASS  
PRE-SORTED  
PAID**

Montezuma, Iowa  
Permit No. 30



**STAR**  
*search* **XXI**

**SATURDAY, SEPTEMBER 2, 2023**

10:30 AM EST | at the farm | Modoc, Indiana