

STAR  
*search* XX



SATURDAY, SEPTEMBER 3, 2022

AT THE FARM, MODOC, INDIANA

Its again a pleasure to invite you to Modoc Indiana for Labor Day weekend. We are right in the middle of State Fair season here. Attending these State Fairs reminds me every year what an amazing industry we have the opportunity to be involved in. Watching the pride young people have in the finished product that they have tirelessly worked for and dedicated themselves to reminds me why this is what we should all want our young people involved with. The quality and goodness of these young people and their parents just furthers my belief that there is no better place to raise a child than on a farm in the livestock industry.

I thank God each and every day for my job and my family. I realize how lucky I am to have such a loving, supporting, and beautiful wife and an amazing little girl that makes every day worth living. Especially when she tells you she loves you. Cortney and I coaching her softball and All-Star team was truly enjoyable and an experience I will treasure forever. I realize how lucky I am to have been born into a family business that would turn out to be a passion and almost obsession for the rest of my life. I also realize how fortunate I have been to have the love and support of my grandparents, parents, and uncle and aunt. I just hope I can somehow keep Cates Farms in continued progression of what my grandfather dreamed it to be and what my dad and Randy made it into.

My dad, Randy, and Tanner are still a very big part of this operation that is still ran with the love of a family business, but just with different sectors. I truly appreciate everything they do and have done to help Cortney and I on our exciting as well as scary transition into doing this on our own financially.

Our herdsman Kyle Shoufler is one of the main reasons for the success of Cates Farms over the last six years. It is such a blessing to have someone of his talent, character, and knowledge to head our program into the future. He and his wife Lauren are going to be new parents by the time you all arrive for the sale this year. We could not be more excited for them and pray for a safe entrance into the world for their child. We have made a really nice addition this year in Drew Curtis. He is a bright talented young man and we feel very fortunate to have him and his girlfriend Brooklyn here with us. I also want to thank all our staff both here at home and at shows for making Cates Farms and Sunrise Sunset Farms what they are.

We are so happy to have a business and lifestyle that although is exhausting, time consuming, and expensive, is a great place to raise a child. We invite you to join us in the future of our program and we can raise our children together doing not only something that we have a passion for, but something that will benefit our kids forever; because of the experiences and positive traits they learn.

~ Tyler Cates



Tyler, 765.576.0035 | Cortney, 410.707.0267  
 Kyle Shoufler, 317.650.7999 | Tanner Cates  
 Drew Curtis, 308.530.3845  
 Brian & Angie, 765.969.0373  
 Randy & Janet, 765.853.5819  
 7893 South Indian Trail, Modoc, IN 47358

[www.catesfarms.com](http://www.catesfarms.com)



Cortney Hill-Dukehart Cates, 410.707.0267  
 Tyler Cates, 765.576.0035 | Kyle Shoufler, 317.650.7999  
 Drew Curtis, 308.530.3845 | Bob Hill & Marlene Dukehart  
 7893 South Indian Trail, Modoc, IN

Like us on ...



#### SALE DAY PHONES

Brian 765.969.0373  
 Randy 765.914.1504  
 Cortney 410.707.0267

#### SALE ACCOMMODATIONS

Randolph Inn & Suites  
 765.584.8281 Winchester, IN

Garden Inn  
 765.529.0345 New Castle, IN

Steve Alford All-American Inn  
 765.593.1212 New Castle, IN

#### AUCTIONEER

Cody Lowderman 309.313.2171

#### SALE MANAGERS

Aegerter Marketing Services, Inc.  
 Jeff K. Aegerter 402.641.4696  
[jeff.aegerter@gmail.com](mailto:jeff.aegerter@gmail.com)  
[www.aegertermarketing.com](http://www.aegertermarketing.com)

Cagwin Cattle Services, Inc.,  
 Don Cagwin  
 217.452.3051 or 217.341.7552  
 FAX: 217.452.3053  
[cagwincattle@casscomm.com](mailto:cagwincattle@casscomm.com)  
 Cindy Cagwin-Johnston, 217.452.3056

Sears Marketing Services  
 Alan K. Sears 970.396.7521 or 970.454.3986  
[alan.sears@aksears.com](mailto:alan.sears@aksears.com)  
[searsmarketingservices.com](http://searsmarketingservices.com)

Angus Hall of Fame  
 Carter Ward, 816.261.0891

#### LIVESTOCK REPRESENTATIVES

Kent Jaecke, Special Representative  
 405.408.2440

Darryl Rahn, *Shorthorn Country*  
 217.473.1124

Montie Soules, ASA Executive Secretary/Treasurer  
 918.645.4322

Stuart Wilson, Sale Consultant  
 217.454.9355

Scott Trennepohl, Sale Consultant  
 765.620.1700

Jason Smith, Sale Consultant  
 256.338.0023

Jeremey Hagg, Sale Consultant  
 406.833.0117

#### INSURANCE

Jame Secondino Krieger, 812.208.0956

#### THANK YOU

Thank you to Tanner Cates, Skylar Bennett, Kyle Shoufler, Lauren Martin, Drew Curtis, Brad Johnson, Raleigh Doerstler, Shyan Bennett, Neil Marshall and Ryan Holiway for making our cattle on sale day look great.

Photos take by Cortney Cates and Kyle Shoufler.  
 Cover photo by Brooklynn Salo.

# STAR SEARCH XX SALE

## SATURDAY SEPTEMBER 3, 2022

10:30 AM EST

at the farm  
 Modoc, Indiana

Entrance to parking is located at the intersection of US 36 and Indian Trail Road. It is 200 yards west of sale site.

#### SCHEDULE OF EVENTS

##### FRIDAY, SEPTEMBER 2ND

6:00 pm View the cattle and enjoy a meal & fellowship with the Cates families

RC Cattle Open House  
[www.SCOnlineSales.com](http://www.SCOnlineSales.com)  
 Cattle available Friday - Sunday

Smith Family Farms Cattlemen's Cut  
 Open House - Cattle available Friday - Sunday

##### SATURDAY, SEPTEMBER 3RD

10:30 am Cates Farms Star Search XX  
 Shorthorn Production Sale

Lunch will be provided by Graze On Catering

4:00 pm Smith Family Farms Cattlemen's Cut  
 Open House - Cattle available Friday - Sunday

6:30 pm Cornerstone Farms Born To Be Rock Stars  
 Volume III Sale, Winchester, IN

6:30 pm Indiana Fall Classic Sale

RC Cattle Open House  
[www.SCOnlineSales.com](http://www.SCOnlineSales.com)  
 Cattle available Friday - Sunday

WATCH & BID LIVE ONLINE  
 CCI.LIVE

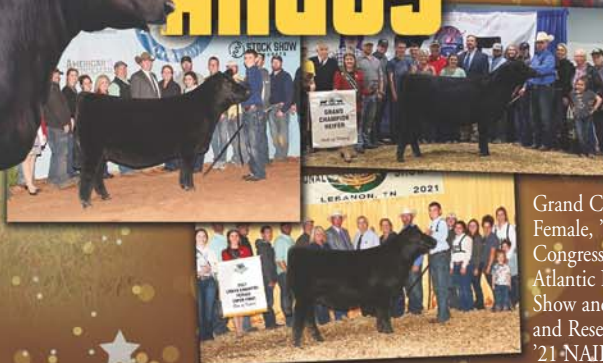






Angus heifer sired by EXAR Blue Chip

# ANGUS



Grand Champion Female, '22 Cattlemen's Congress Jr Show, '21 Atlantic National Angus Show and All-American Angus Futurity, Jr & Open Shows and Reserve Grand Champion Female, '21 NAILE Open Show - Shown by Houston Ferree

# SHORTHORNPLUS



Grand Champion Female, '22 Cattlemen's Congress Jr Show

- Shown by Shyan Bennett



Reserve Grand Champion Female, '22 Cattlemen's Congress Jr Show

- Shown by Samantha VanVorbis



Grand Champion Female, '21 NAILE Jr & Open and '22 Cattlemen's Congress Open Show and Reserve Grand Champion Female, '22 NJSS - Shown by Houston Ferree



ShorthornPlus heifer sired by No Limit



Shorthorn heifer sired by Red Knight

# SHORTHORN



Grand Champion Female, '21 NAILE Jr & Open Show and Fifth Overall Supreme Champion Female

- Shown by Reed Schumacher



Third Overall Champion Female, '22 NJSS

- Shown by Carter Meyer



Reserve Grand Champion, '22 NJSS

- Shown by Keegan McGrew



Grand Champion Female, '22 Cattlemen's Congress Jr & Open Show

- Shown by Miller Smith



LOT 1A

# THE MONA LISA'S



IA

**CF MONA LISA 222 LL X ET**

Heifer | \*x4341441 | Polled | Roan | 02.01.2022 | 222

IB

**CF MONA LISA 281 LL X ET**

Heifer | \*4341442 | Horned | Roan | 04.02.2022 | 281

IC

**CF MONA LISA 152 LL X ET**

Heifer | \*4331603 | Horned | Roan | 03.01.2021 | 152

CSF LONG LOOK HC 706 ET  
SULL MONA LISA REWARD ET  
FREE K-KIM HOT COMMODITY  
CF MARGIE 119 SOL X ET  
SULL RED REWARD 9321  
CYT TIAWANA 864U ET

BEPD	1.9
WEPD	42
YEPD	62
MEPD	22

LOT 1A -This 3289 cow continued her extreme hot streak in the show ring, producing both the reserve and third overall heifers at this year's junior nationals. This is a full sister to Keegan McGrew's heifer that was Reserve Grand. This heifer is a stout, square built individual with good neck extension and plenty of body. She is the kind that can compete for top fives at jackpots as well as at the big national shows.

LOT 1B - This was one of mine and Kyle's favorite on picture day. I remember the morning she was born he told me he thought we had a 3289 born overnight that was as impressive as any we had ever had. This female offers the same stoutness and ruggedness as the rest of the females out of this mating but with a little more stretch and extension.

LOT 1C - Bred to JSF KANE Cinch; due February 1, 2023. This is a big-time donor cow here. She has the pedigree and genetic makeup to stand out in a crowd, and the look and quality to go with it. This cow family is our most fertile, productive and have proven to be big egg producers. This heifer would have made the sale last year as a show heifer if we had discovered her horns quicker and would have had enough time to have her healed up. She is a big-time female with big time dollar generating potential.

CF Mona Lisa 0121  
Division Champion, NAILE &  
Cattlemen's Congress; and Third  
Overall Champion Female, '22 NJSS  
Shown by Carter Meyer



CF Mona Lisa 14, Grand Champion &  
Reserve Supreme Champion Female,  
Keystone; Division Champion, NAILE  
and Reserve Grand Champion Female, '22  
NJSS. Shown by Keegan McGrew



CF V8 Mona Lisa Reward  
780, Grand Champion  
Female, '18 NJSS  
Shown by Miller Smith



CF V8 Mona Lisa 935, Grand Champion Female, '20 American  
Royal; Reserve Grand Champion Female, '20 NWSS, Junior Show;  
and Division Champion at NAILE, NWSS & NJSS  
Shown by Miller Smith

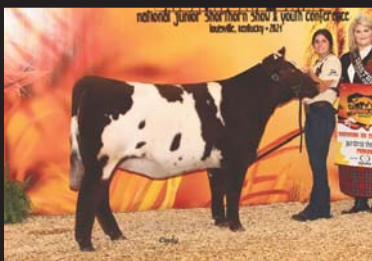






LOT 1B

LOT 1C



CF Mona Lisa 099  
Division Champion, '21 NJSS and Reserve Division  
Champion, '21 Cattlemen's Congress, Junior Show  
Shown by Makenzie Laughery



CF Mona Lisa  
0119 TP, '21  
American Royal,  
NAILE and NWSS  
Division Champion  
Shown by  
Gabriella Leone

CF V8 Mona Lisa  
845, Division  
Champion, '18  
NAILE and  
Reserve Division  
Champion,  
'19 NWSS, Shown by  
Paige Wickard



CF Mona Lisa 002, Division Champion, '21 Cattlemen's  
Congress Junior Show and Reserve Division, '20 NAILE  
Shown by Alyssa Carter





LOT 2A

2A

**CF MONA LISA 220 UH X ET**

Heifer | \*x4341443 | Polled | Roan | 01.28.2022 | 220

2B

**CF MONA LISA 2101 UH X ET**

Heifer | \*x4341444 | Polled | RWM | 05.01.2022 | 2101

2C

**CF MONA LISA 2105 UH X ET**

Heifer | \*x4341445 | Polled | RWM | 05.14.2022 | 2105

2D

**CF MONA LISA 2112 UH X ET**

Heifer | \*x4341446 | Polled | RWM | 05.16.2022 | 2112

CF S/F UPPER HAND X ET  
SULL MONA LISA REWARD ET  
LITTLE CEDAR AVIATOR 503X  
CF HHF MARGIE 2106 HC X ET  
SULL RED REWARD 9321  
CYT TIAWANA 864U ET

BEPD 2.6  
WEPD 44  
YEPD 68  
MEPD 22

LOT 2A - This is an extremely good show heifer prospect and proven she is a strong survivor. We lost her recip mother when she was three months old. That group of calves was just starting to eat creep and she was able to compete for some nursing time and owned the creep feeder. She is still a little green from missing the milk fat but the big pieces are very evident in this one. She is crazy necked, big bodied, and nice structured. She is really coming on and should look lights out by sale day.

LOT 2B - This is definitely one of the best ones we raised this year and she has not even really started eating any creep feed until this week. This female covers all the essential traits to be a big time banner collector. She possesses great look, balance, and structure with all the volume, rib, and power you would ever want. This one has the potential to win all the big ones.

LOT 2C - We really like our Upper Hand calves and are continuing to use him heavily in our IVF program. We heard all Spring from customers and breeders that their Upper Hand calves were their best. This is a very complete, fault free female that has the ability to compete at any level, as she is hard to find a major flaw with.

LOT 2D - This is a very uniquely built female. She has as much bone, muscle, and shape as any in the sale, yet she still has good body while being long and sleek fronted. This is the kind that could raise a good bull or show steer just as easily as a good show heifer.



LOT 2B



LOT 2C



LOT 2D







LOT 3A



LOT 3B



LOT 3C



LOT 3D



**3A****CF MONA LISA 210 SOL X ET**

Heifer | \*x4341438 | Polled | Red | 01.14.2022 | 210

**3B****CF MONA LISA 256 SOL X ET**

Heifer | \*x4341439 | Polled | Roan | 03.04.2022 | 256

**3C****CF MONA LISA 270 SOL ET**

Heifer | \*4341440 | Horned | Roan | 03.18.2022 | 270

**3D****CF MONA LISA 15 SOL X ET**

Heifer | \*x4331601 | Polled | Roan | 01.05.2021 | 15

CF SOLUTION X ET	CF TRUMP X	BEPD 4.3
	NPS DESERT ROSE 004	WEPD 54
SULL MONA LISA REWARD ET	SULL RED REWARD 9321	YEPD 84
	CYT TIAWANA 864U ET	MEPD 18

LOT 3A - This has been our go to mating for the past five years. This mating has produced a Junior National Grand Champion, a Denver Grand Champion female, an American Royal Grand Champion female, a Louisville Reserve Grand Champion female, a Fort Worth Grand Champion female and a third overall Grand Champion female at Junior Nationals. I would say it is fair to say this solid red January full sister has a championship caliber pedigree.

LOT 3B - This mating never misses and consistently produces stout, dimensional cattle that are fertile and have tremendously productive lives after their show careers. That is what we are all after and I believe this female can do those things extremely well.

LOT 3C - This is another female that has been a standout since birth. She possesses the extra stoutness and bone that the 3289's are known for and combines it with a flexible skeleton and a tremendous look of quality. This female should have a very successful run for some lucky junior.

LOT 3D - Bred to CF Ultimate Reward; due December 29, 2022.

We don't have as many cows to sell due to the selling of all the partnership cows last year, but we have certainly made up for it with undoubtedly the best group of Shorthorn bred heifers we have ever sold.

This cow family is the most prolific and fertile cow family on the farm and they are all big egg producers. This big, rugged, stout female could pay for herself in the first calf and then you will be off to the races making eggs.

**3E****MONA LISA 143 SOL ET**

Heifer | \*4331602 | Horned | R&amp;W | 02.19.2021 | 143

CF SOLUTION X ET	CF TRUMP X	BEPD 4.3
	NPS DESERT ROSE 004	WEPD 54
SULL MONA LISA REWARD ET	SULL RED REWARD 9321	YEPD 84
	CYT TIAWANA 864U ET	MEPD 18

The Shorthorn Junior Nationals is known across the show cattle industry as being absolutely second to none. We want to do our part in helping provide the funding and allow our great staff to keep making our Junior Nationals the best in the business. We proudly are donating this female as part of the Shorthorn Royal Society.

**DONATION LOT ...****4****CF MONA LISA 240 KK X ET**

Heifer | \*x4341453 | Polled | White | 02.18.2022 | 240

CF KING KONG X ET	CF TRUMP X	BEPD 3.8
	MISS MYRTLE BO 305 ET	WEPD 40
SULL MONA LISA REWARD ET	SULL RED REWARD 9321	YEPD 62
	CYT TIAWANA 864U ET	MEPD 24

Here is a little different twist on the can't miss 3289 female. I always loved the size, extension, and added hair that came with King Kong progeny. This female is going to be a hot ticket item come sale time. She is a stand out for many reasons including color. She sells with a bottle of purple soap to get you started lol. TH Carrier





# THE MONA LISA SMILE'S



5

## CF CSF MONA LISA 282 PRIMO X ET

Heifer | \*xar4341458 | Polled | Blue Roan | 04.02.2022 | 282

COLBURN PRIMO	DAMERON FIRST CLASS	BEPD 3.8
	SILVEIRAS SARAS DREAM 1339	WEPD 59
	CF TRUMP X	YEPD 92
CF V8 MONA LISA SMILE 526		MEPD 14
	SULL MONA LISA SMILE 615	

### ShorthornPlus

It would be hard to argue that there has been a more successful Shorthorn Plus mating in the breed. The past two Shorthorn Plus Show Heifers of the year were produced from this mating. This exciting young female is the spitting image of the Ferree heifer that has been so dominate. Yes, they are almost the exact same in terms of color and markings but this heifer also offers the extreme quality and wow factor to make her a major contender everywhere.



6

## CF MONA LISA 1131 OP X ET

Heifer | \*xar4341480 | Polled | Black | 12.28.2021 | 1131

SSF ON POINT 4028	COLBURN PRIMO	BEPD 4.0
	PLUM CREEK ANNIE LU 4472	WEPD 58
	CF TRUMP X	YEPD 94
CF V8 MONA LISA SMILE 5 ET		MEPD 16
	SULL MONA LISA SMILE 615	

### ShorthornPlus

Here is an extremely correct On Point daughter out of a full sister to the 526 donor cow. This female is extremely good in her skeleton and angles and has a very striking profile. She could make a really good big bred. Even though she will show as a senior heifer calf and a senior yearling I would just breed her and treat her the same as a January.

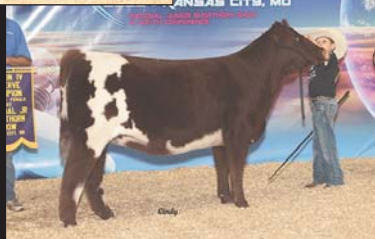


CF Mona Lisa 136 - '22 NJSS Fourth Overall Champion ShorthornPluse Female and Cattlemen's Congress Grand Champion ShorthornPlus Female  
Shown by Shyan Bennett



CF CSF Mona Lisa 934 - '21 Cattlemen's Congress & '20 NAILE Grand Champion ShorthornPlus Female; Scarlet & Grey, Midwest Showdown A & B; Clark County Cattle Battle A & B Champion ShorthornPlus; and Fifth Overall, DTS Cupid Classic A & B; Champion ShorthornPlus Ohio Best points  
Shown by Samantha VanVorhis

CF CSF Mona Lisa 196 '22 NJSS Reserve Division Champion  
Shown by Weston Ward



CF Mona Lisa Primo 115X, '22 NJSS Reserve Grand Champion ShorthornPlus Female; '22 Cattlemen's Congress Open Show Grand Champion ShorthornPlus Female; '21 Hoosier Beef Congress Supreme Champion Female; and '21 NAILE Open & Junior Shows Grand Champion Female  
Shown by Houston Ferree





LOT 7A



LOT 7B

7A

CF MONA LISA 238 OP X ET

Heifer | \*xAR4341451 | Polled | Black | 02.18.2020 | 238

7B

CF MONA LISA 255 OP X ET

Heifer | \*xAR4341455 | Polled | Black | 03.02.2022 | 255

SSF ON POINT 4028

COLBURN PRIMO

PLUM CREEK ANNIE LU 4472

CF SOLUTION X ET

CF V8 MONA LISA REWARD 782 SOL ET

SULL MONA LISA REWARD ET

BEPD	3.4
WEPD	66
YEPD	105
MEPD	16

LOT 7A - ShorthornPlus

I'm not sure we pictured a more attention demanding female than this one this year. She is flawless in her angles, feet, and leg design. She is so long fronted and high tying in the way her neck comes out of her shoulder, yet still has the softness and stoutness to make her truly unique. She has the potential to be a Supreme Champion contender with time.

LOT 7B - ShorthornPlus

This full sister offers the same extremely loose, sound structure as her sister. The On Point progeny are the soundest structured Angus sired cattle we have ever used to make ShorthornPluses. This female's dam is a National Champion Shorthorn female to also increase her value.



CF Mona Lisa OP,  
Shown by  
Samantha  
Van Vorhis

CF V8 Mona Lisa  
Reward 782,  
Reserve Grand  
Champion  
Female, '18  
NAILE and  
Grand Champion  
Female, '19  
NWSS Jr & Open  
and FWSS,  
Shown by Ryan  
Wickard







LOT 8

LOT 9



# THE DREAM LADY/ LADY CRYSTAL'S

8

## CF CRYSTAL LUCY 230 RK X ET

Heifer | \*x4341450 | Polled | Roan | 02.15.2022 | 230

SULL RED KNIGHT 2030 ET	CF SOLUTION X ET	BEPD 3.3
	K-KIM MONA LISA 10T ET	WEPD 51
	LITTLE CEDAR AVIATOR 503X	YEPD 82
SULL CRYSTAL'S LUCY ET		MEPD 20
	SULL LADY CRYSTAL-434P-1 ET	

Retaining 1/2 embryo interest after show career.

This heifer's full sister was a very popular champion last year in Louisville and helped get Shorthorns back in the top five at the national level. We believe this one has those same capabilities. This has been an impressive female since day one and has the "it" factor that helps her really stand out. She combines covering all the basics but with all the bells and whistles to go along with it. I'd guess this will be one of the first ones in the sale order.

9

## CF KLS DREAM ON 221 NL X ET

Heifer | \*xAR4341449 | Polled | Black | 02.01.2022 | 221

CONLEY NO LIMIT	EXAR BLUE CHIP 1877B	BEPD 3.8
	SILVEIRAS S SIS SANDY 2355	WEPD 70
	SULL RIGHT DIRECTION ET	YEPD 106
SULL DREAM ON 5158 ET		MEPD 20
	SS DREAM LADY 161 ET	

ShorthornPlus.

This is another one that will be very high on the want lists. This is maybe the deepest, biggest bodied female we have ever produced. She combines her tremendous rib cage with an incredible profile, and an extremely correct set of feet and legs. This has been a really successful mating for Tim Schaeffer and has resulted in numerous champions. You will hear from this one down the road.

Owned with Kyle and Lauren Shoufler



10

**CF CRYSTAL'S LADY 265 CINCH X ET**

Heifer | \*x4341456 | Polled | Roan | 03.14.2022 | 265

JSF KANE CINCH 61H	SASKVALLEY OUTLAW 173Z	BEPD 0.8
	AA KANE RED REBA 613E	WEPD 53
	CF CF S/F ULTIMATE REWARD ET	YEPD 82
CF CRYSTALS LADY 986 UR X		MEPD 26
	SULL CRYSTAL'S LADY 6265D ET	

We are excited about this young female for so many reasons. We are absolutely ecstatic about our Cinch calves. He is a true calving ease bull that produces show quality progeny. This heifer's pedigree and kind are proof that the Shorthorn breed has bridged the gap between the showing and commercial producer as much as any breed in the industry.



11

**CF CRYSTAL LADY 290 UR X**

Heifer | \*x4341460 | Polled | RWM | 04.17.2022 | 290

CF S/F ULTIMATE REWARD ET	SULL RED REWARD 9321	BEPD 1.1
	CF HHF MARGIE 2106 HC X ET	WEPD 52
	JSF MARQUIS 127X	YEPD 80
SULL CRYSTAL'S LADY 6265D ET		MEPD 22
	SULL LADY CRYSTAL-434P-1 ET	

The 6265 cow has already made a huge splash in the breed for only being flushed three times. She is going to be one of the cornerstones in our herd for many years to come and will be getting flushed heavily this Fall. This Ultimate Reward daughter is an outstanding show heifer prospect with big generating potential. She is a full sister to the dam of Lot 10 and a maternal sister to the breed's hottest young sire CF Payweight.



11A

**4 IVF SEXED HEIFER EMBRYOS**

Selling one package of four Sexed Heifer embryos.

CYT MAXIM X SULL CRYSTAL'S LADY 6265D

We feel this could be a home run mating. This mating should combine the raw dimension, power, and productivity of 6265 with the show ring presence offered by the Max Rosa cow family through CYT Maxim.

11B

**4 IVF SEXED HEIFER EMBRYOS**

Selling one package of four Sexed Heifer embryos.

2 CF SOLUTION X SULL CRYSTAL'S LADY 6265D

AND

2 BYLAND FLASH X SULL CRYSTAL'S LADY 6265D

This a truly exciting opportunity to get involved with our next breed changing donor. We are offering two eggs sired by the generational sire CF Solution and two by Byland Flash that will produce a full sib to the record-breaking young herd sire CF Payweight.



CF Crystals Lucy 073, '21 NAILE Open Show Grand Champion Female and a full sib to Lot 8.  
Shown by Reed Schumacher



SULL Crystals Lady 6265D, dam of Lot 11, 11A and 11B.



CF Payweight, '22 Cattlemen's Congress Grand Champion Bull



CF Lady Crystal 160 BW, '21 NAILE Reserve Division Champion  
Shown by Reed Schumacher





12

## CF CSF DREAM LADY 178 X ET

Heifer | \*x4328463 | Polled | Red | 04.04.2021 | 178

CSF EVOLUTION HC	FREE K-KIM HOT COMMODITY	BEPD 3.8
	CF BOY CAROLINE 210 ET	WEPD 56
CYT DREAM LADY SWAG ET	HD SWAGGER 802	YEPD 86
	SS DREAM LADY 424 ET	MEPD 17

Bred to JSF KANE Cinch; due March 16, 2023.

This is a very complete female that has had numerous successful sisters in the showing. She has a tremendous pedigree and is very good natured.



13

## CF CRYSTAL'S LADY 167 CTP X

Heifer | \*xAR4331608 | Polled | Black | 03.17.2021 | 167

CONLEY TURNING POINT 8087	STEVENSON TURNING POINT	BEPD 1.5
	SILVEIRAS S SIS SANDY 2355	WEPD 68
CF CF CRYSTALS LUCY 9100 RK X ET	SULL RED KNIGHT 2030 ET	YEPD 109
	SULL CRYSTAL'S LUCY ET	MEPD 18

ShorthornPlus - Bred to JSF KANE Cinch; due January 1, 2023.

This is a huge bodied very easy flushing female that is out of a full sister to Lot 8. These Lady Crystal females are working for generations down the line. This should be a low maintenance productive female for a long time.



14

## OSF CRYSTAL

Heifer | \*4310408 | Horned | RWM | 07.28.2020 | 440

CF TRUSTEE X	LEVELDALE BOARDWALK 530C	BEPD 3.1
	CF DREAM GIRL 260 HC X	WEPD 52
SULL CRYSTAL'S DIRECTION 7285E ET	SULL RIGHT DIRECITON ET	YEPD 80
	SULL CRYSTAL'S LUCY ET	MEPD 22

Bred to JSF KANE Cinch; due February 1, 2023.

This is a very impressive female that was raised by our good friend and neighbor Steve Oler. This female is massive. She has incredible muscle and power, to go along with an incredible pedigree. Her calf by Cinch should be much anticipated.



CF Upperhand, son of 2106.



CF SF Margie 998, Reserve Grand Champion Female, '20 American Royal Shown by Skyler Ward

CF SF Margie 093, Fifth Overall, '21 National Junior Shorthorn Show Shown by Keegan McGrew



CF Ultimate Reward, son of 2106.



CF Top Flight, son of 2106.



CF Park Place, son of 2106.



# THE MARGIE 2106'S



15

## CF MARGIE 280 MAX X ET

Heifer | \*x4341457 | Polled | Red | 03.27.2022 | 280

CYT MAXIM 9202 ET

CF SOLUTION X ET

MINDEMANN MAX ROSA 310 ET

FREE K-KIM HOT COMMODITY

CF HHF MARGIE 2106 HC X ET

CF MARGIE 9114 SOL ET

BEPD	4.0
WEPD	50
YEPD	80
MEPD	16

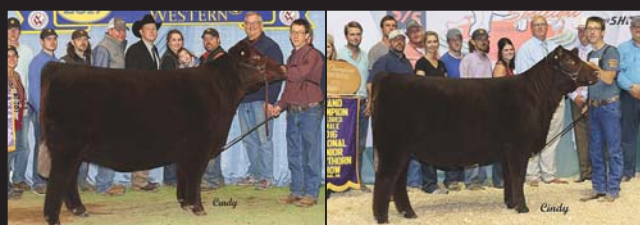
Everyone knows that the 2106 donor is one of my all-time favorite show heifers and cows. I don't think any cow in the breed has done what she has done producing breed leading herd bulls. She has certainly held her own producing show heifers that can compete as well. I think this Maxim daughter has the potential to be her best daughter to date. This female has all the components to be a big time heavy bred.



CF CSF Margie 830, Grand Champion Female, '19 NAILE Junior & Open and '20 NWSS, Shown by Mark Inskeep



CF CSF Margie 611 HC, Reserve Grand Champion Female, '17 NJSS and Reserve Grand Champion Female, '17 NAILE Shown by Mark Inskeep



CF CSF Margie 575, Grand Champion Female, '16 NJSS & '17 NWSS Shown by David Smith



CF CSF Margie 820, Grand Champion Female, '19 Keystone; Division Champion '19 NWSS & FWSS; Reserve Division, '20 NWSS Shown by Cornerstone Farms



# THE MARGIE 119'S

16

## HCC MARGIE 611 0402 ET

Heifer | \*x4295439 | Polled | R&W | 04.02.2019 | HCC 0402

LEVELDALE BOARDWALK 530C	STUDER'S TAYLOR MADE 7Y	BEPD 1.6
CF CSF MARGIE 611 HC ET	LEVELDALE BLOSSOM 230Z	WEPD 50
	FREE K-KIM HOT COMMODITY	YEPD 74
	CF MARGIE 119 SOL X ET	MEPD 18

Bred to CF Payweight; due February 1, 2023.

We synchronized our Shorthorn cows this year because we wanted to get some cows bred to Payweight. I wanted to offer a really good young cow bred to him to calve next Spring. This is a very maternally built Boardwalk daughter out of a Reserve National champion female. She is good footed and good uddered. Her mating to Payweight could be your ticket to the show regardless of sex.

16A

## CF MARGIE 168 LEGIT

Heifer | \*xAR4336831 | Polled | Black | 03.18.2021 | 168

W L E LEGIT B30	B C LOOKOUT 7024	BEPD 0.4
	TYRA'S MAY BABY 30U	WEPD 52
HCC MARGIE 611 0402	LEVELDALE BOARDWALK 530C	YEPD 72
	CF CSF MARGIE 611 HC ET	MEPD 16

ShorthornPlus. Bred to JSF KANE Cinch; due February 1, 2023.

This is a very maternally bred and maternally designed female. She is sound, good footed, and very easy fleshing. She has generations of calving ease bred into her and is bred to the exciting new Cinch bull.

17

## CF MARGIE 179 UR X

Heifer | \*x4332141 | Polled | RWM | 04.05.2021 | 179

CF S/F ULTIMATE REWARD ET	SULL RED REWARD 9321	BEPD 2.3
	CF HHF MARGIE 2106 HC X ET	WEPD 48
CF CSF MARGIE 830 AV ET	LITTLE CEDAR AVIATOR 503X	YEPD 75
	CF MARGIE 119 SOL X ET	MEPD 21

Bred to JSF KANE Cinch; due February, 1, 2023.

This female's mother was a very popular National Champion for Mark Inskeep. This was her natural calf last year and we think a really high quality female. We have high hopes flushing the 830 cow next Spring and also have high hopes for what this Ultimate Reward daughter can do when bred to Cinch.

# THE MARGIE 9114

18

## CF MARGIE 198 HC X ET

Heifer | \*x4331606 | Polled | Red | 05.03.2021 | 198

FREE K-KIM HOT COMMODITY	K-KIM ALLURE 124M ET	BEPD 2.5
	K-KIM MEG 270N ET	WEPD 46
CF MARGIE 9114 SOL ET	CF SOLUTION X ET	YEPD 67
	CF MODOC MARGIE 523 TPX ET	MEPD 19

Bred to JSF KANE Cinch; due February 26, 2023.

This is an extremely attractive full sister to 2106 and so many other great females from this timeless mating. The function and fertility are bred deep with this one. She is bred to calve at a young age but that should not be a problem calving a Hot Commodity daughter bred to Cinch.





# THE MAX ROSA'S



Cortney

19

## CF MAX ROSA 245 RK X ET

Heifer | \*x4341454 | Polled | Red | 02.27.2022 | 245

SULL RED KNIGHT 2030

CF SOLUTION X ET  
K-KIM MONA LISA 10T

CYT MAX ROSA 1145ET

CF SOLUTION  
MIDEMANN MAX ROSA 310 ET

BEPD 26  
WEPD 60  
YEPD 98  
MEPD 26

Retaining 1/2 embryo interest after show career.

The 1145 donor was probably my favorite of all the Max Rosas owned by Sullivan's. This Red Knight daughter has a good chance to be very special. Her feet and leg design combined with her structural integrity ensure her to be a competitor all the way through. She is a moderate framed, well balanced female that will be admired by many.

20A

## CF MAX ROSA 286 EV X ET

Heifer | \*x4341459 | Polled | Roan | 04.14.2022 | 286

CSF EVOLUTION HC

FREE K-KIM HOT COMMODITY  
CF BOY CAROLINE 210 ET

CYT DSC MAX ROSA 4136

LITTLE CEDAR AVIATOR 503X  
MINDEMANN MAX ROSA 310 ET

BEPD 3.3  
WEPD 45  
YEPD 78  
MEPD 17

This is a full sister to the Fourth Overall Female at the 2021 NJSS for Kane Aegerter. This female offers good stoutness, dimension, and hair on a solid and sound foundation.



20B

## 4 IVF SEXED HEIFER EMBRYOS

Selling one package of four Sexed Heifer embryos.

BYLAND FLASH X CYT DSC MAX ROSA 4136

These will be full sibs to the very powerful female owned by Dickson Cattle Company that has been shown so successfully by Brextyn. That heifer offers more natural size performance and pounds than any show heifer we have produced in quite some time, which is something we are probably going to need to incorporate back into our Shorthorns to make them industry competitive. Brextyn's heifer was the top Shorthorn heifer in the Ohio Best Program and also a NAILE division winner.



CF Max Rosa 811, '19 NJSS Third Overall Champion Female and sister to Lots 20A, 20B & 20C. Shown by Ryan Wickard



CF Max Rosa 025, '21 NJSS Fourth Overall Champion Female and sister to Lots 20A, 20B & 20C. Shown by Kane Aegerter



CF SBF Max Rosa 124, '21 NAILE Reserve Division Champion. Shown by Paige Wickard



CF CSF Max Rosa 725, '18 NJSS Fifth Overall Champion Female and maternal sister to Lot 19. Shown by Sara Sullivan



CF Max Rosa 195 Flash, '21 NAILE Reserve Division Champion and full sib to Lot 20C embryos. Shown by Brextyn Grabiel



# THE DEMI'S



**21A**

## CF NB DEMI 21 PRIMO X ET

Heifer | \*xAR4341447 | Polled | Black | 01.01.2022 | 21

COLBURN PRIMO	DAMERON FIRST CLASS	BEPD 3.9
	SILVEIRAS SARAS DREAM 1339	WEPD 63
CF CSF DEMI 650 SOL ET	CF SOLUTION X ET	YEPD 94
	WHR LS DEMI 8931 ET	MEPD 12

ShorthornPlus.

This was one of the first calves we had born this year and I knew it was going to be an exciting crop. I have been truly excited about his female all along. She is built very similar to her full sister shown so successfully by Samantha Van Vorhis last year, but she is stouter. This is the best set of Plus Heifers we have ever offered and if you like this one as well as any it would be hard to argue.



**21B**

## CF NB DEMI 250 RB X ET

Heifer | \*x4341452 | Polled | Roan | 03.01.2022 | 250

SULL RED BLOOD	SULL RED REWARD 9321	BEPD 4.2
	RL CUMBERLAND 5N35	WEPD 46
CF CSF DEMI 650 SOL ET	CF SOLUTION X ET	YEPD 70
	WHR LS DEMI 8931 ET	MEPD 19

One of the truly intriguing heifers in the sale from a pedigree standpoint. I think this female has endless ways she could be mated successfully. This is not taking away from the fact she will no doubt wear a show halter and compete at the national level. This heifer was very striking in the picture pen.

CF NB Demi 024  
'22 Cattlemen's Congress  
Reserve Grand Champion  
ShorthornPlus Female  
Shown by Samantha  
VanVorhis



CF CSF Demi 650  
'18 NWSS Junior & Open  
ShowGrand Champion Female  
Shown by Jacob Nikkel



## GENERAL INFORMATION

**Feeding & Showing Terms:** We pride ourselves in the professional way we exhibit your purchases. Here, at Cates Farms, we employ some of the best fitters in the business at both the farm and the shows. We spare no expenses to exhibit your cattle to ensure your success. The charges below are not designed for us to make money, rather to insure we can continue to offer the best service to you. Each animal that will be located at Cates Farms show barn will be charged \$25/day. Each animal will be charged \$250/day while attending shows with Cates Farms crew. This will cover all expenses while at shows. All animals must be insured while in our care/possession. Any veterinary expense above routine will be owners obligation. All accounts will be billed monthly.

**Breeding Update/Calving Information:** There will be added information available at the sale site that will list any additions to the catalog information as to new calves born and new breeding information that will occur after the printing of this catalog.

**1/2 Interest Females:** The owner will own 100% of the animal. Cates Farms will get 1/2 of the embryos from each flush. Semen on all of our bulls will be available. Cost will be split.

**Breeding Guarantee:** All cattle sell under the Standard Breeding Guarantee recommended by the American Shorthorn Association. An exception would be through mishandling either obesity or under nourishment and illegal practices associated with showing the female.

**Registration & Transfer:** All animals sell with completed pedigrees or applications for registration.



# THE ROSE/ROSEMARY'S

22

## CF TRAVELING RUBY 215 SOL ET

Heifer | \*4341482 | Horned | RWM | 01.18.2022 | 215

CF SOLUTION X ET

CF TRUMP X  
NPS DESERT ROSE 004  
SULL TRAVELER 9807 ET  
HD RUBY 903

BEPD 6.2  
WEPD 54  
YEPD 88  
MEPD 17

We have bought into this Traveling Ruby cow family both with embryos as well as our 7144 donor cow. We like still incorporating some older genetics into our cattle because of the growth and power they offer when breeding to today's lower birth weight, more moderate bulls. When you are done showing this heifer I think you will have a really nice genetic piece to breed off of.

23A

## CF ROSEBUD 298 LL X ET

Heifer | Pending | Polled | Red | 04.30.2022 | 298

CSF LONG LOOK HC 706 ET

FREE K-KIM HOT COMMODITY  
CF MARGIE 119 SOL X ET  
SULL RED REWARD 9321  
SULL RED TRAVELER 2405Z ET

BEPD -  
WEPD -  
YEPD -  
MEPD -

We are really excited about this 7144 donor cow. Her first calf by Hot Commodity is going to enter our donor pen next Spring. Her second calf won her division at Cattleman's Congress and was third overall in her division at Junior Nationals for Ryan Wickard. This is her first embryo calf, but we will have quite a few full sisters to this heifer this Fall and next Spring. This heifer calf has a lot of shape and is sound structured.

23B

## CF ROSEBUD 182 FLASH X

Heifer | \*x4336830 | Polled | Roan | 04.09.2021 | 182

BYLAND FLASH 9U106

STUDER'S UNIVERSAL 10B  
BYLAND CINDY BEAUTY5M106  
SULL RED REWARD 9321  
SULL SULL RED TRAVELER 2405Z

BEPD 3.1  
WEPD 62  
YEPD 100  
MEPD 26

Bred to JSF KANE Cinch; due February 14, 2023.

This is 7144's natural calf from last year. I think this is one of the more intriguing bred heifers from a pedigree standpoint. I love her outcross pedigree and extra growth. Her mating to Cinch is going to be exciting regardless of sex.

24

## CF ROSEMARY REWARD 149 UR X

Heifer | \*x4336828 | Polled | RWM | 02.25.2021 | 149

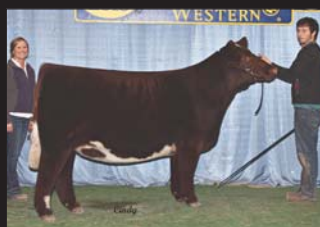
CF CF S/F ULTIMATE REWARD ET

SULL RED REWARD 9321  
CF HHF MARGIE 2106 HC X ET  
SULL RED REWARD 9321  
SULL RED ROSEMARY -2 ET CL

BEPD 0.4  
WEPD 47  
YEPD 70  
MEPD 24

Bred to JSF KANE Cinch; due March 3, 2023.

Here is a really nice Ultimate Reward daughter that has tons of low birth weight and maternal qualities bred into her. She is a big bodied, moderate framed female that should have lots of longevity.



SULL Traveling Ruby ET,  
dam of Lot 22.



SULL Red Traveler 2405Z



SULL Rosebud 7114E,  
dam of Lot 23A & 23B.



CF Rosebud 090, '21 Cattleman's  
Congress Open Show Division  
Champion

Shown by Ryan Wickard

SATURDAY, SEPTEMBER 3, 2022



# THE CUMBERLAND'S



**25A**

**CF 275**

Heifer | Pending | Polled | Blue Roan | 03.20.2021 | 275

**25B**

**CF 276**

Heifer | Pending | Polled | Blue Roan | 03.20.2021 | 276

SILVEIRAS STYLE 9303	GAMBLES HOT ROD	BEPD
	SILVEIRAS ELBA 2520	WEPD
CF CUMBERLAND 334 SOL X ET	CF SOLUTION X ET	YEPD
	CF RL CUMBERLAND 7104 BS X	MEPD

ShorthornPlus.

Sometimes things work out even better than you expect. When this embryo split and we got twins out of a really dumb recip we thought "great this is going to create a bunch of extra work," instead that dumb but heavy milking cow licked them both off and took great care of them with zero assistance. We think you will really like these two identical twins. They are stout and hairy and out of a Junior National Champion. We have strategically named them twin one and twin two. The only difference is that one outweighs two by 15 pounds. Both are THC

**26**

**WHR CMF CUMBERLAND N058 ET**

Heifer | \*x4282732 | Polled | Red | 11.15.2018 | WHR N058

NBS LOW RIDER 42W ET	SR RED RIDERS DRIVE	BEPD 4.8
	NBS DAPHNE 42M	WEPD 46
WHR CUMBERLAND 8425	HD BLOODSTONE 603 ET	YEPD 77
	WHR CUMBERLAND WR10	MEPD 23

Bred to RGLC SULL Reverence; due March 25, 2023. P.E. to CF Cinch.

This cow was our pick of all the heifer calves in the always successful WHR sale. She has a tremendous look of quality and eye appeal. We are keeping her daughter from last year to put back in the herd. If her first two calves are any indication of what she can do you are in for a great run with this young youthful female.

**26A**

**CF CUMBERLAND 295 CINCH X**

Heifer | \*x4341461 | Polled | Roan | 04.24.2022 | 295

JSF KANE CINCH 61H	SASKVALLEY OUTLAW 173Z	BEPD 3.0
	AA KANE RED REBA 613E	WEPD 50
WHR CMF CUMBERLAND N058 ET	NBS LOW RIDER 42W ET	YEPD 82
	WHR CUMBERLAND 8425	MEPD 26

These Cinch calves are so impressive. They have the show ring appeal needed for success in the arena. They are really good in terms of their feet and leg structure which is still the most important trait in cattle in my mind, regardless of what your market is. This is a really attractive show heifer with a cool pedigree to work with.



27

## CF CUMBERLAND 188 BW X

Heifer | \*x4331609 | Polled | RWM | 04.23.2021 | 188

LEVELDALE BOARDWALK 530C	STUDER'S TAYLOR MADE 7Y	BEPD 4.9
LEVELDALE BLOSSOM 230Z	HD BLOODSTONE 603 ET	WEPD 56
CF CUMBERLAND 55 BS	WHR CUMBERLAND 4124 ET	YEPD 86
		MEPD 17

Bred to JSF KANE Cinch; due February 15, 2022.

This is a very stout, rugged made Leveldale Boardwalk daughter. The mating of her to Cinch should defiantly complement each other very well.



28

## SSF CUMBERLAND 907 AV ET

Cow | \*x4292350 | Polled | RWM | 02.03.2019 | SFF 907G

LITTLE CEDAR AVIATOR 503X	WHR SONNY 8114	BEPD 3.6
CF CUMBERLAND 535 SOL ET	NPS ROSES RIDER 031 ET	WEPD 44
CF RL CUMBERLAND 7104 BS X	CF SOLUTION X ET	YEPD 76
		MEPD 19

Bred to JSF KANE Cinch; due October 2022.

This Aviator daughter is a big stout female that is out of a past State Fair Champion Female for Miller Smith. I don't think you could find a bull that compliments her any better than Cinch, and you are going to have return on your investment a month after owning her with her being due in October.



# THE SERVICE Sires



CF PAYWEIGHT



CF SF UPPER HAND



JSF KANE CINCH 61H



RGLC SULL REVERENCE



# THE MYRTLE BO'S



**29**

## SULL BLOODED MYRTLE 6690D ET

Heifer | \*x4292150 | Polled | Red | 10.10.2016 | 6690D

SULL RED BLOOD	SULL RED REWARD 9321	BEPD 4.0
	RL CUMBERLAND 5N35	WEPD 42
	CF TRUMP X	YEPD 65
SULL MYRTLE BO 46P-3 ET CL	MISS MYRTLE BO 305 ET	MEPD 22

Bred to RGLC SULL Reverence; due March 5, 2023. P.E. to CF Cinch.

I truly think this is a donor caliber female. Not many cows accomplished more for Sullivan Farms Shorthorn operation than CF Myrtle Bo 46p. I think these Red Blood daughters are really going to become coveted as they mate so well with today's bulls. This is a big-time female that is tough to let go but with our cow herd pretty small right now, we still wanted to try and offer some donor quality young cows that you have come to expect out of the Star Search sale.



**29A**

## CF MYRTLE BO 181 UR X

Heifer | \*x4336829 | Polled | RWM | 04.08.2021 | 181

CF CF S/F ULTIMATE REWARD ET	SULL RED REWARD 9321	BEPD 1.8
	CF HHF MARGIE 2106 HC X ET	WEPD 45
	SULL RED BLOOD	YEPD 68
SULL SULL BLOODED MYRTLE 6690D ET	SULL MYRTLE BO 46P-3 ET CL	MEPD 22

Bred to JSF KANE Cinch; due February 1, 2023.

This the kind of high-quality attractive female we strive to produce. She combines this with an outstanding pedigree and a great set of numbers.



**29B**

## SULL HAGER'S MYRTLE 9103G ET

Heifer | \*X4291387 | Polled | RWM | 02.03.2019 | 9103G

SULL RED KNIGHT 2030 ET	CF SOLUTION X ET	BEPD 3.4
	K-KIM MONA LISA 10T ET	WEPD 50
	CF TRUMP X	YEPD 78
SULL MYRTLE BO 46P-3	MISS MYRTLE BO 305 ET	MEPD 21

Bred to JSF KANE Cinch; due October 11, 2022.

This is an ultra sound moving, stout and rugged beast. There have been several full sisters to this female claim National Championship titles. She is bred to our very exciting calving ease specialist, Cinch. She is due to calve a month after you own her. There is never anything wrong with a quick return on your investment.



30

## CF CSF CHERRI 25 HC X ET

Heifer | \*x4341448 | Polled | RWM | 01.06.2022 | 25

	K-KIM ALLURE 124M ET	BEPD 0.9
FREE K-KIM HOT COMMODITY		WEPD 44
	K-KIM MEG 270N ET	YEPD 68
SULL RIGHT CHERRI 3808 ET		MEPD 23
	SULL CHERRI 205 -2 ET	

This is a really solid heifer with a very productive look. I think you will really appreciate her overall rib, body, and structural soundness. This heifer can compete early and often. Good beef here.



31

## CF VERONICA 212 PRIMO X ET

Heifer | \*xAR434141 | Polled | BWM | 01.16.2022 | 212

	DAMERON FIRST CLASS	BEPD 4.5
COLBURN PRIMO		WEPD 61
	SILVEIRAS SARAS DREAM 1339	YEPD 94
SBF VERONICA 92Y	SB PFC PROUD VENTURE WH	MEPD 18
	SHADYBROOK VERONA 59 U ET	

ShorthornPlus.

This is another fault free, fundamentally good beef cow. This heifer has so much rib and broodiness to go along with a solid look and sound foundation. This heifer will look a lot different by sale time with a little fuzz on her.



32

## SKY CATF MISS WINNIE

Cow | 532150 | Polled | Black | 05.03.2022 | SKY K522

	DAMERON FIRST CLASS	BEPD -
COLBURN PRIMO 5153		WEPD -
	SILVEIRAS SARAS DREAM 1339	YEPD -
MISS WINNIE BELLE 2B	GOET I80	MEPD -
	CA X MA X AN 4655	

MaineTainer.

I always say it is better to be lucky then good! I was over checking on the ShorthornPlus heifer that Shyan was showing and stumbled onto this amazing creature. We are not trying to branch out into other breeds but I couldn't help myself on this one. I like being involved with anything that can compete nationally and this one can.



33

## CF COUNTLESS 784 TP X ET

Cow | \*x4271870 | Polled | Roan | 04.06.2017 | 784

	PHILDON CUNIA DIVIDEND	BEPD 4.4
CF TRUMP X		WEPD 38
	CF CARMELE NG NG 158X	YEPD 64
SULL RED COUNTLESS 8007 ET	SR RED RIDERS DRIVE	MEPD 19
	HAA COUNTLESS 22P	

Bred to RGLC SULL Reverence; due March 3, 2023.

This is a beautiful Shorthorn brood cow in the prime of her productive life. She is easy fleshing, good footed, and has a nice heavy milking udder. We are very excited about the Reverence bull and will have our first IVF calves by him later this Fall. You will like this cow.





# THE SEMEN

## 34A,B & C CF SOLUTION X ET

Bull | \*x4072518 | Polled | RWM | 03.19.2003 | 368

CF TRUMP X	PHILDON CUNIA DIVIDEND	BEPD 5.9
	CF CARMELE NG NG 158X	WEPD 64
NPS DESERT ROSE 004	NPS DURANGO 774 CBH ET	YEPD 103
	NPS DESERT ROSE 833 ET	MEPD 13

Selling three packages of two units.

## 35A,B & C JSF KANE CINCH 61H

Bull | \*x4313477 | Polled | Roan | 02.25.2020 | 61H

SASKVALLEY OUTLAW 173Z	SASKVALLEY INNOVATION 131X	BEPD 1.1
	STAR P JODY ROSE 5X	WEPD 55
KANE RED REBA 613E	KANE CAPTAIN 10B	YEPD 87
	KANE LADY REWARD 613CET	MEPD 30

Selling three packages of three units.

## 36 LEVELDALE BOARDWALK 530C

Bull | \*x4228433 | Polled | Red | 02.20.2015 | 530C

STUDER'S TAYLOR MADE 7Y	SASKVALLEY RAMROD 155R	BEPD 1.7
	DSF COUNTRY DANCER 42U	WEPD 58
LEVELDALE BLOSSOM 230Z	SULL RED DEMAND 9329 ET	YEPD 84
	LEVELDALE BLOSSOM 933W	MEPD 17

Selling one package of four SEXED HEIFER units.

## 37 HD BLOODSTONE 603 ET

Bull | \*x4069163 | Polled | Roan | 03.20.2003 | 603

CF TRUMP X	PHILDON CUNIA DIVIDEND	BEPD 7.0
	CF CARMELE NG NG 158X	WEPD 48
NPS DESERT ROSE 004	NPS DURANGO 774 CBH ET	YEPD 85
	NPS DESERT ROSE 833 ET	MEPD 13

Selling one package of four SEXED HEIFER units.

## 38 CF FLEX

Bull | \*x4166577 | Polled | Roan | 01.02.2010 | 1

CF SOLUTION X ET	CF TRUMP X	BEPD 7.9
	NPS DESERT ROSE 004	WEPD 45
SNOWHILL RUBY ET	CF TRUMP X	YEPD 76
	ARH RUBY HR001	MEPD 17

Selling one package of four SEXED HEIFER units.

## 39 NBS LOW RIDER 42W ET

Bull | \*x4179969 | Polled | Red | 05.11.2009 | 42W

SR RED RIDERS DRIVE	HS RODEO DRIVE 062WR	BEPD 3.4
	SR IRONMAN CELIA	WEPD 37
NBS DAPHNE 42M	CF TRUMP X	YEPD 63
	CCS TIMEPROOF 803	MEPD 27

Selling one package of four SEXED HEIFER units.

## 40 AR SU LU TONIC X

Bull | \*x4083093 | Polled | Red | 04.01.2004 | 480

DFS RIDER EAGLE 176 ET	RB EAGLE 148TH	BEPD 2.5
	DFS RIDERS JANET 801	WEPD 63
AR SU LU FIRST RAPTURE	MOBLEYS FUTURE 1A	YEPD 106
	AR SU LU FIRST RANSOM	MEPD 21

Selling one package of four SEXED HEIFER units.



# 7 YEARS

## *Junior National Champions*



**CF MONA LIZA 148**

'22 Reserve Grand Champion Female  
... shown by Keegan McGrew



**CF MONA LISA 0121**

'22 Third Overall Champion Female ...  
shown by Carter Meyer



**CF MONA LISA PRIMO 115**

'22 Reserve Grand Champion  
ShorthornPlus Female ...  
shown by Houston Ferree



**CF MONA LISA 136**

'22 Fourth Overall Champion  
ShorthornPlus Female ...  
shown by Shyan Bennett



**CF CSF CRYSTALS SWAN 015**

'21 Grand Champion Female  
... shown by Houston Ferree



**CF MAX ROSA 025**

'21 Fourth Overall Champion Female  
... shown by Kane Aegerter



**CF CSF MARGIE 093**

'21 Fifth Overall Champion Female ...  
shown by Keegan McGrew



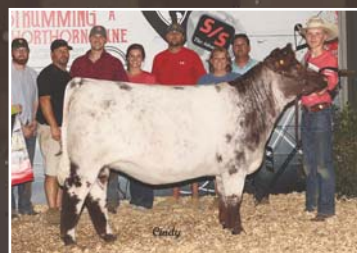
**CF NM DEMI 024**

Fourth Overall ShorthornPlus Female  
... shown by Samantha VanVorhis



**CF CSF AUGUSTA PRIDE 8147**

'20 Grand Champion Female ...  
shown by Cole Whisman



**CF CSF MARGIE 830**

'19 Fifth Overall Champion Female  
... shown by Mark Inskeep



**CF MAX ROSA 811**

'19 Third Overall Champion Female  
... shown by Ryan Wickard



**CF CSF MAX ROSA 725**

'18 Fifth Overall Champion Female  
... shown by Sara Sullivan



**CF V8 MONA LISA REWARD 780**

'18 Grand Champion Female  
shown by Miller Smith



**CF CSF DEMI 650 SOL**

'17 Fourth Overall Champion Female  
shown by Jacob Nikkel



**CF MARGIE 611H**

'17 Reserve Grand Champion Female  
shown by Mark Inskeep



**CF CSF MARGIE 575**

'16 Grand Champion Female  
shown by David Smith



CHAMPIONS CHAMPIONS CHAMPIONS CHAMPIONS CHAMPIONS CHAMPIONS CHAMPIONS

# 7 YEARS

## National Western Stock Show & Cattlemen's Congress



**CF MONA LISA PRIMO 115X**  
'22 Grand Champion ShorthornPlus Female, Open Show  
... shown by Houston Ferree



**CF CSF DREAM LADY 140**  
'22 Grand Champion Female, Open Show ...  
shown by Miller Smith



**CF CSF DREAM LADY 140**  
'22 Grand Champion Female, Junior Shows ...  
shown by Miller Smith



**CF MONA LISA 136**  
'22 Grand Champion ShorthornPlus Female, Junior Show ...  
shown by Shyan Bennett



**CF NB DEMI 024**  
'22 Reserve Grand Champion ShorthornPlus Female, Junior Show ...  
shown by Samantha Van Vorhis



**CF CSF CRYSTALS SWAN 015**  
'21 Grand Champion Female, Junior Show ... shown by Houston Ferree



**CF SUNFLOWER 965 UR**  
'21 Grand Champion Female, Junior Show ... shown by Makenzie Laughery



**CF CSF MONA LISA 934**  
'21 Grand Champion ShorthornPlus Female ... shown by Samantha VanVorhis



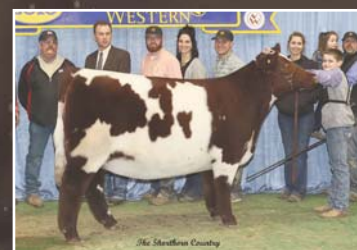
**CF HHF MARGIE 084 HC X**  
'22 Grand Champion Female, Open & Junior Shows  
... shown by Curtis Genetics



**CF CSF MARGIE 830**  
'20 Grand Champion Female, Open Show ... shown by Mark Inskeep



**CF V8 MONA LISA REWARD 708**  
'19 Grand Champion Female, Junior Show ... shown by Ryan Wickard



**CF V8 MONA LISA REWARD 708**  
'19 Grand Champion Female, Open Show ... shown by Ryan Wickard



**CF CSF DEMI 650 SOL**  
'18 Grand Champion Female, Open Show ... shown by Jacob Nikkel



**CF CSF DEMI 650 SOL**  
'18 Grand Champion Female, Junior Show ... shown by Jacob Nikkel



**CF CSF DEMI 6100**  
'18 Reserve Grand Champion Female, Open Show ... shown by Claire Trennephol



**CF CSF MARGIE 575**  
'17 Grand Champion Female, Junior Show ... shown by David Smith





**CF MONA LISA PRIMO 115**  
'21 Grand Champion ShorthornPlus,  
Open Show ...  
shown by Houston Ferree



**CF CRYSTALS LUCY 073**  
'21 Supreme Champion Shorthorn  
and Grand Champion Female, Open Show  
... shown by Reed Schumacher



**CF MONA LISA PRIMO 115**  
'21 Grand Champion ShorthornPlus,  
Junior Show ...  
shown by Houston Ferree



**CF CRYSTALS LUCY 073**  
'21 Grand Champion Shorthorn Female  
and Fifth Overall Supreme Champion  
Female, Junior Show  
... shown by Reed Schumacher



**CF HHF MARGIE**  
'20 Grand Champion Female, Open Show  
... shown by Houston Ferree



**CF CSF MONA LISA PRIMO**  
'20 Grand Champion ShorthornPlus, Junior  
& Open Show ... shown by  
Samantha VanVorhis



**CF HHF MARGIE**  
'20 Grand Champion Female Junior Show  
... shown by Houston Ferree



**CF CSF MONA LISA PRIMO**  
'20 Grand Champion ShorthornPlus,  
Junior Show ... shown by  
Samantha VanVorhis



**CF CSF MARGIE 830**  
'19 Grand Champion Female, Open Show  
... shown by Mark Inskeep



**CF CSF MARGIE 830**  
'19 Grand Champion Female, Junior Show  
... shown by Mark Inskeep

# NAILE

## Seven Years



**CF V8 MONA LISA REWARD 782**  
'18 Reserve Grand Champion Female,  
Junior Show ... shown by Ryan Wickard



**CF CSF MARGIE 611**  
'17 Reserve Grand Champion Female,  
Junior Show ... shown by Mark Inskeep



**CF CSF DREAM LADY 78**  
'17 Reserve Grand Champion Female, Open  
Show ... shown by Cornerstone Farms



**CF V8 MONA LISA SMILES 526**  
'16 Reserve Grand Champion Female,  
Open Show ... shown by John Reasor



# SHORTHORN & SHORTHORNPLUS



**CF MASKERADE X**

- Show Bull of the Year
- Grand Champion Bull, Keystone International, American Royal, NAILE & FWSS
- Reserve Grand Champion Bull, Cattlemens Congress
- Congratulations LSA Shorthorns



**CF CSF MONA LISA 196 HC**

- Reserve Division Champion, NJSS
- Grand Champion Shorthorn Heifer, Kentucky Beef Expo
- Congratulations Weston Ward

**\$10,500**



**CF CSF DREAM LADY 135 EV**

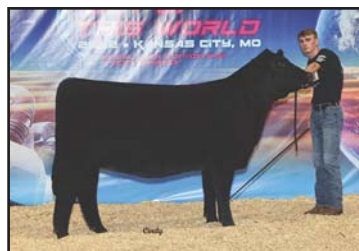
- Division Champion, American Royal Junior and Open Show
- Champion Shorthorn Heifer, Ohio AGR
- Congratulations Skylar Ward

**\$10,000**



**CF LADY CRYSTAL 160 X**

- Reserve Division Champion, NAILE
- Class Winner, NJSS
- Congratulations Reed Shumacher



**CF LADY CRYSTAL 15 PRIMO**

- Division Champion, Keystone International
- Champion ShorthornPlus Female, Ohio AGR
- Congratulations Hailey Frazier



**CF MARGIE 0125**

- Division Champion, Cattlemen's Congress Junior Show
- Reserve Division Champion, Open Show
- Two-time NJSS Class Winner
- Congratulations Cooper Laughery



**CF MIRAGE 120 EL ET**

- Champion Shorthorn Heifer, Kentucky Beef Expo
- Congratulations Lane McCall

**\$5,000**



**CF MONA LISA 175 LL X ET**

- Class winner, Cattlemen's Congress
- Congratulations Dayson Cash

**\$10,500**



**CF MONA LISA LL 190**

- Reserve Champion Shorthorn Heifer, Hoosier Beef Congress
- Class Winner, NAILE
- Congratulations Carter Wickard



**CF MONA LISA 185 SOL X ET**

- Class winner, NAILE Junior & Open
- Class winner, Cattlemen's Congress
- Congratulations Alyssa Carter



**CF CSF DEMI 125 HC X ET**

- Class winner, NAILE & Cattlemen's Congress
- Reserve Grand Champion Shorthorn, Purdue AGR
- Congratulations Mallory Inskeep



**CF DREAM LADY 1105**

- Reserve Champion Female, Fall Classic
- Class Winner, Hoosier Beef Congress
- Third Overall Female, Boone Fair
- Congratulations Chase & Courtney Cunningham

**\$5,000**





**CF AUGUSTA PRIDE 115 UR**

- Third Overall Champion Female, Texas State Show
- Class Winner, Cattlemen's Congress
- Congratulations Makenzie Laughery



**CF MONA LISA OP X ET**

- Champion ShorthornPlus Female, Ohio State Fair Open Show
- Reserve Champion ShorthornPlus Female, Ohio State Fair Junior Show
- Champion ShorthornPlus and Third Overall Female, Ohio AGR
- Champion ShorthornPlus & Third Overall Female, Marion County BEST Show
- Congratulations Samantha Van Vorhis



**CF MAX ROSA 195 FLASH**

- Division Champion Female, NAILE
- Many time Champion Shorthorn and High Point Shorthorn Heifer
- Ohio BEST Program
- Congratulations Brextyn Grabriel



**CF SBF MAX ROSA 124 AV X**

- Reserve Division Champion, NAILE
- Champion Shorthorn Heifer, Purdue AGR
- Champion Shorthorn Heifer and Reserve Supreme Champion, Hancock County Showdown
- Congratulations Paige Wickard



**CF MONA LISA 180 UH**

- Champion Shorthorn Heifer, Dixie National Junior Show
- Congratulations Elizabeth Rone



**CF MONA LISA PRIMO 197**

- Third Over-All Division Champion, NJSS
- Congratulations Jozie Beiser



**CF MONA LISA 0119 TP X ET**

- Division Champion, NAILE, NWSS Junior & Open Shows and American Royal
- Class Winner, NJSS
- Congratulations Gabriella Leone



**CF MARGIE 1119 UR**

- Division Champion, NJSS
- Congratulations Maddox Reedy



**CF MONA LISA FLASH 1121**

- Third Overall Division Champion, NJSS
- Congratulations Carter Wickard



**CF MATTIS 170**

- Reserve AOB Heifer at the Rising Star Virginia Prospect Parade
- Congratulations Charlotte Holland

**A SINCERE THANK YOU TO ALL  
OF OUR CUSTOMERS AND FRIENDS  
FOR YOUR CONTINUED SUPPORT  
IN OUR PROGRAM.**

**CONGRATULATIONS TO ALL  
ON A GREAT YEAR.**



CHAMPIONS CHAMPIONS CHAMPIONS CHAMPIONS CHAMPIONS CHAMPIONS CHAMPIONS

# 2022 AMERICAN ANGUS ASSOCIATION

## *Show Heifer of the Year*

- 2021 Atlantic National Junior Show Grand Champion Female
- 2021 Atlantic National Open Show Grand Champion Female
- 2021 All-American Breeders' Futurity Junior Show Grand Champion Female
- 2021 All-American Breeders' Futurity Open show Grand Champion Female
- 2021 American Royal Junior Show Grand Champion Female
- 2021 NAILE Junior Show Reserve Grand Champion Female

- 2021 NAILE Open Show Reserve Grand Champion Female
- 2022 Cattlemen's Congress Junior Show Grand Champion Female
- 2022 Fort Worth Stock Show Reserve Grand Champion Female
- 2022 All-American Breeders' Futurity Supreme Champion Female
- 2022 NJAS Grand Champion Cow/ Calf Pair

Congratulations Houston Ferree

## SSF LADY 5030





# Our Show Heifers MAKE COWS



## SSF LADY 5030

- '21 Atlantic National Junior & Open Shows Grand Champion Female
- '21 All-American Breeders' Futurity Junior & Open Show Grand Champion Female
- '21 American Royal Junior Show Grand Champion Female
- '21 NAILE Junior & Open Show Reserve Grand Champion Female
- '22 Cattlemen's Congress Junior Show Grand Champion Female
- '22 Fort Worth Stock Show Reserve Grand Champion Female
- '22 All-American Breeders' Futurity Supreme Champion Female
- '22 NJAS Grand Champion Cow/ Calf Pair

Congratulations Houston Ferree



## SSF PROVEN QUEEN 5029

- '20 NJAS Division Champion
- '20 Cattlemen's Classic Division Champion
- '20 American Royal Division Champion
- '20 NWSS Division Champion
- '20 Atlantic National Division Champion
- '20 NAILE Reserve Division Champion
- '21 Atlantic Nationals Champion Cow/ Calf Pair

Congratulations Sara Sullivan



## SSF BARDOT 3268

- '19 NJAS Third Overall Grand Champion Female
- '19 NWSS Reserve Division Champion
- '20 NJAS Reserve Champion Cow/ Calf Pair

Congratulations Jake Nikkel

# More CHAMPIONS



## SSF DS LADY 4301

- Reserve Grand Champion Female, All-American Angus Breeders Futurity
- Congratulations Anderson Pender



## MC SSF NIGHT SKY

- Runner-Up Show Bull of the Year
- Reserve Grand Champion Bull, Atlantic Nationals
- Grand Champion Bull, All-American Breeders Futurity
- Grand Champion Bull, American Royal
- Reserve Grand Bull, NAILE
- Congratulations Dawn Acres & Zach McCall



## SSF PHYLLIS 0230

- Reserve Division Champion, Atlantic National
- Congratulations Marcus Van Vorhis



## SSF DS LADY 4191

- Reserve Division Champion, American Royal
- Reserve Champion Angus Female and Fifth Overall Champion, Ohio Beef Expo
- Congratulations Samantha Van Vorhis



## SSF BLACKBIRD 1040

- Grand Champion Angus Female, Keystone ROV Show
- Congratulations Marcus Van Vorhis



## SSF SKY ANNIE LU 5011

- Fifth Overall Champion Female, Ohio State Fair Junior Show
- Champion Angus Heifer, Ohio State Fair Junior & Open Show
- Congratulations Bryson Jones





LOT 41A

# THE LADY IMPRESSION'S

LOT 41B



41A

SSF LADY 1292

Heifer | AAA +20397323 | Polled | 01.29.2022 | 1292

CONLEY EXPRESS 7211	SMA WATCHOUT 482	BEPD 2.7
	DPL SANDY 3040	WEPD 58
	DAMERON FIRST IMPRESSION	YEPD 96
SSF LADY IMPRESSION 0265	COPPER CRK LADY LUT 1120	MEPD 19

Here is a full sister to last year's show heifer of the year in the Angus breed. This female is incredible structured, and very broody, and cow like in her appearance. These Lady Impression daughters are making just as impressive cows as they are show heifers. Her full sister would be a great example of this.

41B

SSF LADY 2262

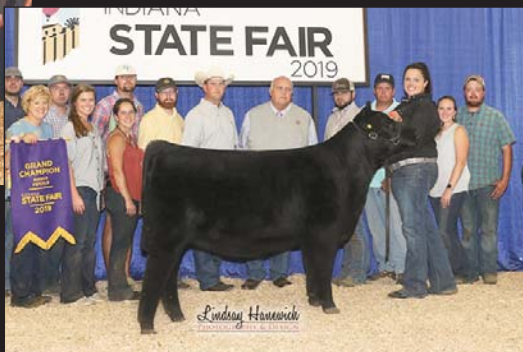
Heifer | AAA +20398468 | Polled | 02.26.2022 | 2262

EXAR BLUE CHIP 1877B	DAMERON FIRST CLASS	BEPD 3.2
	GREENS PRINCESS 1012	WEPD 62
	DAMERON FIRST IMPRESSION	YEPD 100
SSF LADY IMPRESSION 0265	COPPER CRK LADY LUT 1120	MEPD 18

This is a mating I really looked forward to on out of this cow and I was not disappointed. This female offers the same incredible look associated with the Lady Impression but with a shot more power. This heifer is very balanced in her underline and transitions very well from her shoulder into her top and forerib.



SSF Lady 5030, '21 Atlantic National Junior & Open Shows Grand Champion Female; '21 All-American Breeders' Futurity Junior & Open Show Grand Champion Female; '21 American Royal Junior Show Grand Champion Female; '21 NAILE Junior & Open Show Reserve Grand Champion Female; '22 Cattlemen's Congress Junior Show Grand Champion Female; '22 Fort Worth Stock Show Reserve Grand Champion Female; '22 All-American Breeders' Futurity Supreme Champion Female and '22 NJAS Grand Champion Cow/ Calf Pair, Shown by Houston Ferree



SSF Lady 0138, Supreme Champion Female, '19 Indiana State Fair Open Show, Shown by Katie Brock





LOT 41C



LOT 41D

41C

### SSF LADY 4192

Heifer | AAA +20397328 | Polled | 04.19.2022 | 4192

CONLEY NO LIMIT	EXAR BLUE CHIP 1877B	BEPD 2.8
	SILVEIRAS S SIS SANDY 2355	WEPD 57
	DAMERON FIRST IMPRESSION	YEPD 91
	COPPER CRK LADY LUT 1120	MEPD 17
SSF LADY IMPRESSION O265		

This is a full sister to the very popular heifer being shown currently by Samantha Van Vorhis. She offers the same incredible structural design with maybe I a tick more length and extension. I think this one could be special.

41D

### SSF LADY 4302

Heifer | AAA +20397331 | Polled | 04.30.2022 | 4302

SCC SCH 24 KARAT 838	SCC TRADITION OF 24	BEPD .0
	FCF PROVEN QUEEN 419	WEPD 53
	DAMERON FIRST IMPRESSION	YEPD 87
	COPPER CRK LADY LUT 1120	MEPD 25
SSF LADY IMPRESSION O265		

Another new and exciting mating on the Lady Impression cow. This is an ultra complete female that is really hard to find a major hole in. Her structural build is great and I think as the rest of her continues to develop she could be the sleeper of the group, and the best of these sisters in the end.



SSF Lady Impression, Grand Champion Female, '17 Atlantic National Shown by Kallie Knott



SSF DS Lady 4301, Reserve Grand Champion Female, All-American Angus Breeders Futurity Shown by Anderson Pender



SSF DS Lady 4191, Reserve Division Champion, American Royal; Reserve Champion Angus Female and Fifth Overall Champion, Ohio Beef Expo Shown by Samantha Van Vorhis





42

## SSF NELLIE GIRL 3282

Heifer | AAA 20399395 | Polled | 03.28.2022 | 3282

SSF ON POINT 4028

COLBURN PRIMO 5153

BEPD 4.

PLUM CREEK ANNIE LU 4472

WEPD 455

SSF NELLIE GIRL 3027

SMA WATCHOUT 482

YEPD 99

SSF NELLIE GIRL 3105

MEPD 16

Here is the freak of the group. I'm not sure we have ever had a angus female that has this a long of a neck and this much center body. The pieces are all here and when she matures and puts it all together she is going to be dangerous.



43

## SSF LADY 3102

Heifer | AAA 20397325 | Polled | 03.10.2022 | 3102

SSF ON POINT 4028

COLBURN PRIMO 5153

BEPD 3.5

PLUM CREEK ANNIE LU 4472

WEPD 57

TOP LINE LADY 7139

PVF INSIGHT 0129

YEPD 99

TOP LINE LADY 4065

MEPD 20

We still love our On Points and I feel he is certainly one of the young angus sires that is starting to separate from the group as a top sire of show cattle. This heifer exemplifies the soundness of structure that is making On Point a go to sire. This heifer's mother is a truly impressive beast, and her full sister is currently being campaigned successfully by Eva Hinrichsen.



44

## TOP LINE LADY 7003

Cow | AAA +18696906 | Polled | 01.06.2017 | 7003

DAMERON FIRST CLASS

EXG RS FIRST RATE S903 R3

BEPD 5.1

DAMERON NORTHERN MISS 3114

WEPD 58

GAMBLES LADY 959

FAMOUS 7001

YEPD 95

CHAMPION HILL LADY 703

MEPD 15

Bred to mc MC SSF Nightsky; due January 15, 2023.

When we bought this female she was the most expensive angus Cortney and I had ever bought at \$15,000. She paid for herself on her very first calf, and has also provided us with two outstanding daughters that we have put back into the herd. This cow has as much shear foot size, mass, and size as any cow on the farm. She has definitely done her job here and is still in her prime productive years. This cow will produce.



45

## SSF NELLIE LADY 4021

Heifer | AAA +20394326 | Polled | 04.02.2021 | 4021

CONLEY EXPRESS 7211

SMA WATCHOUT 482

BEPD 3.7

DPL SANDY 3040

WEPD 57

SSF NELLIE LADY 2104

S A V BRILLIANCE 8077

YEPD 100

SCC ECHO DELL NELLIE 6005

MEPD 23

Bred to Conley South Point Sexed Heifer Semen; due January 31, 2023.

This is a nice Express daughter out of one of our most impressive donor cows. The 2104 donor is as sound, easy fleshing, and heavy milking as any cow on the farm. Here is a chance to buy two females for the price of one at the same time to bolster your herd as she is bred to sexed heifer semen.





*Cortney*

# THE PROVEN QUEEN'S

46

## SSF PROVEN QUEEN 1022

Heifer | AAA +20397322 | Polled | 01.02.2022 | 1022

SCC SCH 24 KARAT 838

SCC TRADITION OF 24

FCF PROVEN QUEEN 419

DAMERON FIRST CLAS

P V F PROVEN QUEEN 602

BEPD	3.8
WEPD	49
YEPD	80
MEPD	20

DAMERON PROVEN QUEEN 333

We feel this female has a chance to be very special. This cow family has produced so many top sellers and winners for us, but imp I am not sure we have had one with this kind of big ring look. This incredible female has the unique extension and outline that 24 Karat is known for, with the power, dimension, and structure of 333. She has the size and dimension to compete as a calf.



SSF Proven Queen 5029, Division Champion, '21 Atlantic Nationals, '21 Cattlemen's Classic and '20 NWSS, NJAS and American Royal Shown by Sara Sullivan





**LOT 47A**



**LOT 47B**



**LOT 47C**

**47A**

### SSF PROVEN QUEEN 4102

Heifer | AAA +20397326 | Polled | 04.10.2022 | 4102

**47B**

### SSF PROVEN QUEEN 5182

Heifer | AAA +20397329 | Polled | 05.18.2022 | 5182

**47C**

### SSF PROVEN QUEEN 3241

Heifer | AAA +20096849 | Polled | 03.24.2021 | 3241

SILVEIRAS STYLE 9303

GAMBLES HOT ROD

BEPD 2.9

SILVEIRAS ELBA 2520

WEPD 44

DAMERON PROVEN QUEEN 333

DAMERON FIRST CLASS

YEPD 73

P V F PROVEN QUEEN 602

MEPD 14

LOT 47A - This has been for sure the most proven and consistent mating for us since we started selling Angus. Not only have these cattle out of this mating competed at the very highest level, but they have made tremendous cows with awesome udders as well.

LOT 47B - This female is not very old, but some of them just have it when they are born and you can tell they are going to be special; this heifer is that kind. I think a lot of people could land on this one as she is one that is of national caliber.

LOT 47C - Bred to Conley Turning Point; due March 8, 2023. Here is another very special bred female from this very proven mating. She possesses the balance and structural design known for this mating. The Conley Turning Point bull has been exceptional for us and is very calving ease.



SSF Proven Queen 3029, Grand Champion Female, '21 Indiana Preview Show, Shown by Skylar Bennet



SSF Proven Queen, Division Champion, '19 NAILE, Shown by Sara Sullivan



SSF Proven Queen 2258, many time Top Five Female and Champion Angus, Shown by Ralieghe Doerstler



48

**SSF PROVEN QUEEN 3161**

Heifer | AAA 20394323 | Polled | 03.16.2021 | 3161

S A V BISMARCK 5682	G A R GRID MAKER	BEPD
	S A V ABIGALE 0451	WEPD
SSF PROVEN QUEEN 3209	SMA WATCHOUT 482	YEPD
	DAMERON PROVEN QUEEN 333	MEPD

Bred to Conley South Point Sexed Heifer Semen; due January 29, 2023.

The best cows we have had in the Angus business are our Watchouts and our Bismarck's. Here is a Bismarck out of a Watchout and back to one of our top donors. We think she will be a model cow and is safe in calf with a heifer to a National Champion bull. Sounds like an all around winner.



49

**SSF PROVEN QUEEN 3031**

Heifer | AAA 20032206 | Polled | 03.03.2021 | 3031

W L E LEGIT B30	B C LOOKOUT 7024	BEPD
	TYRA'S MAY BABY 30U	WEPD
SSF PROVEN QUEEN 5029	SILVEIRAS STYLE 9303	YEPD
	DAMERON PROVEN QUEEN 333	MEPD

Bred to Conley Turning Point; due February 24, 2023.

This female is the first calf out of the May heifer of Sullivan's that was so successful. She was at her side when she won her division at Atlantic National as a pair. Piper named her Fern when she was in the show barn. I don't always understand her naming scheme but they usually stick. This is a good footed, sound female that should have an excellent udder, her mom sure does.



# THE SANDY'S

50A

**SSF SANDY 3022**

Cow | AAA +20397330 | Polled | 03.02.2022 | 3022

EXAR BLUE CHIP 1877B	DAMERON FIRST CLASS	BEPD 4.4
	GREENS PRINCESS 1012	WEPD 60
CONLEY S SIS SANDY 4313	SILVEIRAS STYLE 9303	YEPD 99
	KNC CABIN CREEK SANDY 804	MEPD 13

There is a lot of the good old stuff in this one's pedigree. Not only is this female an extremely striking, high quality show heifer prospect but she has the added frame fame and royal pedigree to make a cornerstone donor cow when mated to today's popular young sires.



50B

**SSF SANDY 1251**

Heifer | AAA +20394320 | Polled | 01.25.2021 | 1251

SSF ON POINT 4028	COLBURN PRIMO 5153	BEPD 4.0
	PLUM CREEK ANNIE LU 4472	WEPD 50
CONLEY S SIS SANDY 4313	SILVEIRAS STYLE 9303	YEPD 88
	KNC CABIN CREEK SANDY 804	MEPD 15

Bred to PVF Surveillance Sexed Heifer Semen; due February 15, 2023.

We knew it would take time but we are very happy with the market we have developed for our bred heifers. My Grandpa always said the two ways you stay in business for generations is repeat customers and customer service. We have had so many success stories from our breds that it really makes it fun. This exotic looking Sandy bred heifer should be one of the more sought after and but could have a Surveillance heifer calf that could well exceed what she brings in this sale.





# THE BLACKBIRD'S

51

## SSF ENVIOUS BLACKBIRD 5022

Heifer | AAA +20397332 | Polled | 05.02.2022 | 5022

COLBURN PRIMO 5153	DAMERON FIRST CLASS	BEPD 4.0
	SILVEIRAS SARAS DREAM 1339	WEPD 63
EXAR ENVIOUS BLACKBIRD 5983	PVF INSIGHT 0129	YEPD 103
	EXAR ENVIOUS BLACKBIRD 1760	MEPD 15

This is easily the stoutest, hairiest Angus we have ever had born here. She has been impressive since day one and never looked back. I have criticized a lot of bad recipis in my footnotes over the years, but recip tag 608 is going to get a shout out for doing a really great job here. This one has a chance to do a lot of winning at both jack-pots as well as the national level.



TOPLINE  
SENSATIONAL



CONLEY TURNING POINT

SSF ON POINT



SMA WATCHOUT 482



MC SSF NIGHT SKY



CONLEY SOUTH POINT

# SERVICE SIRES



**52A**
**SSF BLACKBIRD 2201**

Heifer | AAA 20394321 | Polled | 02.20.2021 | 2201

SSF ON POINT 4028	COLBURN PRIMO 5153	<b>BEPD</b> 3.6
	PLUM CREEK ANNIE LU 4472	<b>WEPD</b> 47
	PVF NEW HORIZON 001	<b>YEPD</b> 86
SSF BLACKBIRD HORIZON 3254	S C C ROYAL BLACKBIRD 502	<b>MEPD</b> 22

Bred to Conley Turning Point; due March 10, 2023.

This is a really long extended, attractive female that is sound and should have great feet, as both her dam and sire sure did.


**52B**
**SSF BLACKBIRD 3221**

Heifer | AAA +20394325 | Polled | 03.22.2021 | 3221

CONLEY EXPRESS 7211	SMA WATCHOUT 482	<b>BEPD</b> 3.5
	DPL SANDY 3040	<b>WEPD</b> 53
	PVF NEW HORIZON 001	<b>YEPD</b> 93
SSF BLACKBIRD HORIZON 3254	S C C ROYAL BLACKBIRD 502	<b>MEPD</b> 22

Bred to WLE Legit; due February 17, 2023.

Here is another very attractive profiling, well balanced female that is good in terms of feet and leg design. Her mating to Legit should definitely produce on with a show ring look.


**52C**
**SSF BLACKBIRD 4121**

Cow | AAA +20397330 | Polled | 03.02.2022 | 3022

COLBURN PRIMO 5153	DAMERON FIRST CLASS	<b>BEPD</b> 3.2
	SILVEIRAS SARAS DREAM 1339	<b>WEPD</b> 49
	PVF INSIGHT 0129	<b>YEPD</b> 86
SSF BLACKBIRD HORIZON 3254	S C C ROYAL BLACKBIRD 502	<b>MEPD</b> 19

Bred to Conley South Point Sexed Heifer Semen; due January 31, 2023.

This is a full sister to the Blackbird heifer that was shown so successfully by the Marcus Van Vorhis. I feel this is another great opportunity to get a female of extreme quality that is carrying a heifer calf that could more than pay for. Buying two high quality females for the price of one kind of makes since sense to me.





# THE BLACKCAP'S



**53A**

## SSF BLACKCAP 2082

Heifer | AAA 20397324 | Polled | 02.08.2022 | 2082

SSF ON POINT 4028	COLBURN PRIMO 5153	BEPD 2.9
	PLUM CREEK ANNIE LU 4472	WEPD 51
	S A V BISMARCK 5682	YEPD 84
SSF BISMARCK STRUCTURE 5220	SSF BLACKCAP STRUCTURE 4188	MEPD 22

This is a really good female that covers all the bases. Her dam was our original donor cow here at SSF, and has produced for 10 years at the top of our herd. Marcus Van Vorhis showed a primo by 5220 that was Reserve Grand female at the All-American Angus Futurity. A full sister in blood to this female was sold by Smith Family Farms, Jester Farms, and Nikkle Bros to the Denton family in Kansas and was a reserve division winner at Junior Nationals. This heifer is very solid and one of the best.



**53B**

## SSF BLACKCAP 4171

Heifer | AAA +20394330 | Polled | 04.17.2021 | 4171

COLBURN PRIMO 5153	DAMERON FIRST CLASS	BEPD 2.6
	SILVEIRAS SARAS DREAM 1339	WEPD 54
	S A V BISMARCK 5682	YEPD 83
SSF BISMARCK STRUCTURE 5220	SSF BLACKCAP STRUCTURE 4188	MEPD 18

Bred to Bismarck; due January 30, 2023.

This is one of the best built breds in the sale. We take just as much pride in our bred heifer offering as we do our show heifers. This one could have been shown but we were so heavy on Aprils last year and try to only sell a dozen show heifers so that we can maintain this kind of quality in our breds.

# THE SARAS DREAM'S



**54**

## SSF SARAS DREAM 4142

Heifer | AAA +20397327 | Polled | 04.14.2022 | 4142

SCC SCH 24 KARAT 838	SCC TRADITION OF 24	BEPD 4.0
	FCF PROVEN QUEEN 419	WEPD 63
	DAMERON FIRST CLASS	YEPD 103
SILVEIRAS HARAS DREAM 8532	SILVEIRAS SARAS DREAM 1339	MEPD 15

There is no doubt that the Sara's Dream Cow family has been one of the most dominate in the Angus show cattle arena. Here is a 24 Karat out of a full sister to Primo. She is square built, moderate, and sound.



55

## SSF EMBLYNETTE 1127

Heifer | AAA +19166267 | Polled | 01.12.2017 | 1127

SAC CONVERSATION	SILVEIRAS CONVERSION 8064	BEPD 1.4
	LAFILINS FARRAH 0252	WEPD 45
	S A V 8180 TRAVELER 004	YEPD 77
CHAMPION HILL EMBLYNETTE 6372	S A V DMBLYNETTE 7319	MEPD 25

Bred to MC SSF Nightsky; due January 13, 2023.

Cody Sankey brought this females mother over to get a donor picture taken and I liked her well enough that we purchased a set of eggs out of her. This Conversation was a standout yearling, a standout two-year-old and has been a rock-solid producer here as evidenced by her amazing bred in the sale. She produced another of my top bred in a past sale and my top bull calf two years ago. There is no reason to think this female is going to stop producing at a very high level. We are excited to see what the Nightsky bull can do.



55A

## SSF EMBLYNETTE 2211

Heifer | AAA 20394322 | Polled | 02.21.2021 | 2211

SCC SCH 24 KARAT 838	SCC TRADITION OF 24	BEPD -
	FCF PROVEN QUEEN 419	WEPD -
	SAC CONVERSATION	YEPD -
SSF EMBLYNETTE 1127	CHAMPION HILL EMBLYNETTE 6372	MEPD -

Bred to PVF Surveillance Sexed Heifer Semen; due February 14, 2023.

This female has certainly been a standout and a powerhouse since birth. Had it not been for her tail being stepped on as a calf she most certainly would have been sold as a show prospect in last fall's sale. This female has herd changing muscle shape and power. She is carrying a Surveillance heifer calf that could very well change your herd.



# THE GEORGINA'S

56

## SSF GEORGINA 4258

Cow | AAA +19167108 | Polled | 04.25.2018 | 4258

SMA WATCHOUT 482	SILVEIRAS WATCHOUT 0514	BEPD 2.5
	2K BEAUTY 961	WEPD 61
	S A V BISMARCK 5682	YEPD 101
CHAMPION HILL GEORGINA 6518	CHAMPION HILL GEORGINA 2121	MEPD 21

Bred to MC SSF Nightsky; due December 30, 2022.

We try and include young donor quality females each year that are just reaching their prime producing years. When trying to create a successful sale that people want to attend and purchase cattle in you have to make tough decisions and ask yourself what kind of opportunities would it take for me to make an investment in this sale, and this is it. This female is a Watchout out of the 6518 Georgina donor. She was shown successfully by Sara Sullivan winning her class in Denver and FT Worth as a calf. She has great feet and a tremendous udder. She is as striking and attractive as she was as a heifer calf. I think this is a tremendous opportunity and matches up very well to Nightsky phenotypically.





# THE BARDOT'S



57

## SSF BARDOT 4141

Heifer | AAA 20394328 | Polled | 04.14.2021 | 4141

SSF ON POINT 4028	COLBURN PRIMO 5153	BEPD 4.5
	PLUM CREEK ANNIE LU 4472	WEPD 56
	EXAT CLASSEN 1422B	YEPD 97
SELDOM REST BARDOT 5020		MEPD 15
	SELDOM REST B F B ARDOT 9051	

Bred to PVF Insight Sexed Heifer Semen; due January 30, 2023.

We have had numerous breds that have paid for themselves with their first calf. That is your goal as a seller is for the customer to achieve success that exceeds their investment. This one here will have an excellent chance to do just that. This female is a perfect structured on point daughter out of the Bardot cow that produced Jake Nikkels third overall champion at the NJAS. The Her heifer calf by Insight she is carrying is certainly one bred for greatness.

# THE ELSA'S



58

## SSF ELSA 4161

Heifer | AAA 20394329 | Polled | 04.16.2021 | 4161

SSF ON POINT 4028	COLBURN PRIMO 5153	BEPD 2.6
	PLUM CREEK ANNIE LU 4472	WEPD 54
DAMERON ELSA 7192	DAMERON BEST IN CLASS	YEPD 83
	DAMERON ELSA 4117	MEPD 18

Bred to Conley South Point Sexed Heifer Semen; due February 1, 2023.

We have tried to incorporate as many of the Angus breeds top cow families into our herd as we can. I loved the Cherry Knoll Elsa female that the Stabler Family showed. A great deal of the cow families we have are because of specific females I was drawn to in the show ring. This female is very well-bred a and will have a heifer calf out of a National Champion Angus bull five months after you own her.

# THE BARBARA'S



59

## SSF BARBARA 4081

Heifer | AAA 20398536 | Polled | 04.08.2021 | 4081

SMA WATCHOUT 482	SILVEIRAS WATCHOUT 0514	BEPD 4.0
	2K BEAUTY 961	WEPD 63
DDBA BARBARA 1639	DDA DAMERON NORTHERN LIGHT	YEPD 107
	DDA BARBARA 1027	MEPD 21

Bred to Bismarck; due January 30, 2023.

Here is another cow family that has been so successful for the Anderson Family. I always really liked the Barbara female that was shown by the Schafer family of Illinois that was Reserve at the Junior Nationals in Indiana. We absolutely love our Watchout daughters as they are our best momma cows. This females mother is a powerhouse of a cow with a magnificent udder. Her mating to Bismarck just takes the ultimate maternal abilities of this female to the next level.



# THE SEMEN

## SSF ON POINT 4028

Bull | AAA +\*19272390 | Polled | 04.02.2018 | 4028

COLBURN PRIMO 5153	DAMERON FIRST CLASS	BEPD 4.4
	SILVEIRAS SARAS DREAM 1339	WEPD 52
	GAMBLES HOT ROD	YEPD 93
PLUM CREEK ANNIE LU 4472	S H MISS ANNIE LU 6087	MEPD 16

SSF On Point is deceased and his semen is not on the open market!

**LOT 60A** - Selling one package of 2 units of SEXED HEIFER on SSF On Point 4028 semen.

**LOT 60B** - Selling one package of 2 units of SEXED HEIFER on SSF On Point 4028 semen.

**LOT 60C** - Selling one package of 2 units of SEXED HEIFER on SSF On Point 4028 semen.

**LOT 61A** - Selling one package of 3 units of Conventioanl SSF On Point 4028 semen.

**LOT 61B** - Selling one package of 3 units of Conventioanl SSF On Point 4028 semen.

**LOT 61C** - Selling one package of 3 units of Conventioanl SSF On Point 4028 semen.



## GENERAL INFORMATION

**Feeding & Showing Terms:** We pride ourselves in the professional way we exhibit your purchases. Here, at Cates Farms, we employee some of the best fitters in the business at both the farm and the shows. We spare no expenses to exhibit your cattle to ensure your success. The charges below are not designed for us to make money, rather to insure we can continue to offer the best service to you. Each animal that will be located at Cates Farms show barn will be charged \$25/day. Each animal will be charged \$250/day while attending shows with Cates Farms crew. This will cover all expenses while at shows. All animals must be insured while in our care/possession. Any veterinary expense above routine will be owners obligation. All accounts will be billed monthly. **Breeding Update/Calving Information:** There will be added information available at the sale site that will list any additions to the catalog information as to new calves born and new breeding information that will occur after the printing of this catalog. **1/2 Interest Females:** The owner will own 100% of the animal. Cates Farms will get 1/2 of the embryos from each flush. Semen on all of our bulls will be available. Cost will be split. **Breeding Guarantee:** All cattle sell under the Standard Breeding Guarantee recommended by the American Shorthorn Association. An exception would be through mishandling either obesity or under nourishment and illegal practices associated with showing the female. **Registration & Transfer:** All animals sell with completed pedigrees or applications for registration. **Location:** The sale will be held at the farm which is located one mile east of Modoc on Route 36, on the north side of the road. **Air Travel:** There are commercial flights to Indianapolis, Indiana, and Dayton Ohio. There are private paved strips at New Castle and Winchester, Indiana. **Terms:** The terms of the sale are cash or check payable to Cagwin Cattle Services, Inc. Payment to be made to the clerk immediately following the sale and before the cattle are removed from Cates Farms. Purchasers or their representative must sign the bill of sale prior to leaving the sale site. **Billed Accounts:** All billed

accounts are due and expected within 10 days of the sale date. **Insurance** will be available for your purchase at the sale through Harding & Harding. Contact either their representative or the clerk at the settlement desk. **Health:** Each animal will be represented by a state approved health certificate for interstate shipment. Buyers should make themselves aware of the health requirements for their respective states. All vaccinations are up-to-date and cattle born at Cates Farms have been vaccinated. A list will be available on sale day listing any non-vaccinations. **Announcements** made sale day will take precedence over printed material in this catalog. **Genetic Conditions:** We apologize that the results for all genetic conditions are not done at the time of the catalog. We at Cates Farms feel it is very important to have all carriers identified we also belive cattle with these genetic conditions are still as valuable and useful as before. It is up to us as breeders to simply be responsible when mating them. Complete results on all genetic conditions should be done by sale day and will be provided to you on an added sheet. **Liability:** Each animal will be at the buyer's risk as soon as sold, but will be cared for by the sellers for a reasonable amount of time. Neither the owners, employees, auctioneer, sale manager or other affiliated personnel can be responsible for any accidents, but they will make every effort to provide for the safety and comfort of those attending. **Transportation:** The Cates Families will make every effort to assist you in your transportation needs. Local trucking will be available. **Mail Bids:** Mailed or telephoned bids will be handled in a most confidential manner. If you are unable to attend the sale personally, simply contact a representative of Cagwin Cattle Services, Inc., a special representative, a sale consultant or a member of the Cates Farms firm far enough in advance prior to sale day. They will be able to assist you at ringside on sale day.



*Shorthorn Country*  
7607 NW Prairie View Rd  
Platte Woods, MO 64151-1544

**FIRST CLASS  
PRE-SORTED  
PAID**

Montezuma, Iowa  
Permit No. 30



# STAR *search* XX

**SATURDAY, SEPTEMBER 3, 2022**

AT THE FARM, MODOC, INDIANA

