

CHAMPIONS CHAMPIONS CHAMPIONS CHAMPIONS CHAMPIONS CHAMPIONS CHAMPIONS

# 2022 AMERICAN ANGUS ASSOCIATION

## *Show Heifer of the Year*

- 2021 Atlantic National Junior Show Grand Champion Female
- 2021 Atlantic National Open Show Grand Champion Female
- 2021 All-American Breeders' Futurity Junior Show Grand Champion Female
- 2021 All-American Breeders' Futurity Open show Grand Champion Female
- 2021 American Royal Junior Show Grand Champion Female
- 2021 NAILE Junior Show Reserve Grand Champion Female

- 2021 NAILE Open Show Reserve Grand Champion Female
- 2022 Cattlemen's Congress Junior Show Grand Champion Female
- 2022 Fort Worth Stock Show Reserve Grand Champion Female
- 2022 All-American Breeders' Futurity Supreme Champion Female
- 2022 NJAS Grand Champion Cow/ Calf Pair

Congratulations Houston Ferree

## SSF LADY 5030





# Our Show Heifers MAKE COWS



## SSF LADY 5030

- '21 Atlantic National Junior & Open Shows Grand Champion Female
- '21 All-American Breeders' Futurity Junior & Open Show Grand Champion Female
- '21 American Royal Junior Show Grand Champion Female
- '21 NAILE Junior & Open Show Reserve Grand Champion Female
- '22 Cattlemen's Congress Junior Show Grand Champion Female
- '22 Fort Worth Stock Show Reserve Grand Champion Female
- '22 All-American Breeders' Futurity Supreme Champion Female
- '22 NJAS Grand Champion Cow/ Calf Pair

Congratulations Houston Ferree



## SSF PROVEN QUEEN 5029

- '20 NJAS Division Champion
- '20 Cattlemen's Classic Division Champion
- '20 American Royal Division Champion
- '20 NWSS Division Champion
- '20 Atlantic National Division Champion
- '20 NAILE Reserve Division Champion
- '21 Atlantic Nationals Champion Cow/ Calf Pair

Congratulations Sara Sullivan



## SSF BARDOT 3268

- '19 NJAS Third Overall Grand Champion Female
- '19 NWSS Reserve Division Champion
- '20 NJAS Reserve Champion Cow/ Calf Pair

Congratulations Jake Nikkel

# More CHAMPIONS



## SSF DS LADY 4301

- Reserve Grand Champion Female, All-American Angus Breeders Futurity
- Congratulations Anderson Pender



## SSF PHYLLIS 0230

- Reserve Division Champion, Atlantic National
- Congratulations Marcus Van Vorhis



## MC SSF NIGHT SKY

- Runner-Up Show Bull of the Year
- Reserve Grand Champion Bull, Atlantic Nationals
- Grand Champion Bull, All-American Breeders Futurity
- Grand Champion Bull, American Royal
- Reserve Grand Bull, NAILE
- Congratulations Dawn Acres & Zach McCall



## SSF DS LADY 4191

- Reserve Division Champion, American Royal
- Reserve Champion Angus Female and Fifth Overall Champion, Ohio Beef Expo
- Congratulations Samantha Van Vorhis



## SSF BLACKBIRD 1040

- Grand Champion Angus Female, Keystone ROV Show
- Congratulations Marcus Van Vorhis



## SSF SKY ANNIE LU 5011

- Fifth Overall Champion Female, Ohio State Fair Junior Show
- Champion Angus Heifer, Ohio State Fair Junior & Open Show
- Congratulations Bryson Jones





LOT 41A

# THE LADY IMPRESSION'S

LOT 41B



41A

SSF LADY 1292

Heifer | AAA +20397323 | Polled | 01.29.2022 | 1292

CONLEY EXPRESS 7211	SMA WATCHOUT 482	BEPD 2.7
	DPL SANDY 3040	WEPD 58
	DAMERON FIRST IMPRESSION	YEPD 96
SSF LADY IMPRESSION 0265	COPPER CRK LADY LUT 1120	MEPD 19

Here is a full sister to last year's show heifer of the year in the Angus breed. This female is incredible structured, and very broody, and cow like in her appearance. These Lady Impression daughters are making just as impressive cows as they are show heifers. Her full sister would be a great example of this.

41B

SSF LADY 2262

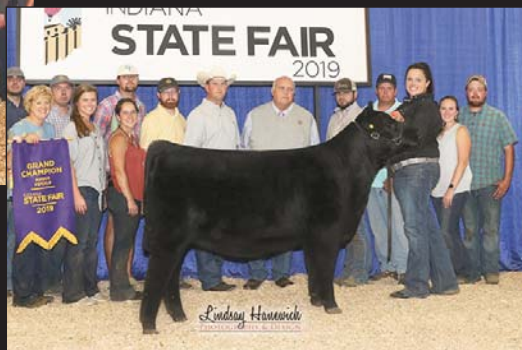
Heifer | AAA +20398468 | Polled | 02.26.2022 | 2262

EXAR BLUE CHIP 1877B	DAMERON FIRST CLASS	BEPD 3.2
	GREENS PRINCESS 1012	WEPD 62
	DAMERON FIRST IMPRESSION	YEPD 100
SSF LADY IMPRESSION 0265	COPPER CRK LADY LUT 1120	MEPD 18

This is a mating I really looked forward to on out of this cow and I was not disappointed. This female offers the same incredible look associated with the Lady Impression but with a shot more power. This heifer is very balanced in her underline and transitions very well from her shoulder into her top and forerib.



SSF Lady 5030, '21 Atlantic National Junior & Open Shows Grand Champion Female; '21 All-American Breeders' Futurity Junior & Open Show Grand Champion Female; '21 American Royal Junior Show Grand Champion Female; '21 NAILE Junior & Open Show Reserve Grand Champion Female; '22 Cattlemen's Congress Junior Show Grand Champion Female; '22 Fort Worth Stock Show Reserve Grand Champion Female; '22 All-American Breeders' Futurity Supreme Champion Female and '22 NJAS Grand Champion Cow/ Calf Pair, Shown by Houston Ferree



SSF Lady 0138, Supreme Champion Female, '19 Indiana State Fair Open Show, Shown by Katie Brock





LOT 41C



LOT 41D

41C

### SSF LADY 4192

Heifer | AAA +20397328 | Polled | 04.19.2022 | 4192

CONLEY NO LIMIT	EXAR BLUE CHIP 1877B	BEPD 2.8
	SILVEIRAS S SIS SANDY 2355	WEPD 57
	DAMERON FIRST IMPRESSION	YEPD 91
SSF LADY IMPRESSION O265	COPPER CRK LADY LUT 1120	MEPD 17

This is a full sister to the very popular heifer being shown currently by Samantha Van Vorhis. She offers the same incredible structural design with maybe I a tick more length and extension. I think this one could be special.

41D

### SSF LADY 4302

Heifer | AAA +20397331 | Polled | 04.30.2022 | 4302

SCC SCH 24 KARAT 838	SCC TRADITION OF 24	BEPD .0
	FCF PROVEN QUEEN 419	WEPD 53
	DAMERON FIRST IMPRESSION	YEPD 87
SSF LADY IMPRESSION O265	COPPER CRK LADY LUT 1120	MEPD 25

Another new and exciting mating on the Lady Impression cow. This is an ultra complete female that is really hard to find a major hole in. Her structural build is great and I think as the rest of her continues to develop she could be the sleeper of the group, and the best of these sisters in the end.



SSF Lady Impression, Grand Champion Female, '17 Atlantic National Shown by Kallie Knott



SSF DS Lady 4301, Reserve Grand Champion Female, All-American Angus Breeders Futurity Shown by Anderson Pender



SSF DS Lady 4191, Reserve Division Champion, American Royal; Reserve Champion Angus Female and Fifth Overall Champion, Ohio Beef Expo Shown by Samantha Van Vorhis





42

## SSF NELLIE GIRL 3282

Heifer | AAA 20399395 | Polled | 03.28.2022 | 3282

SSF ON POINT 4028

SSF NELLIE GIRL 3027

COLBURN PRIMO 5153

PLUM CREEK ANNIE LU 4472

SMA WATCHOUT 482

SSF NELLIE GIRL 3105

BEPD 4.

WEPD 455

YEPD 99

MEPD 16

Here is the freak of the group. I'm not sure we have ever had a angus female that has this a long of a neck and this much center body. The pieces are all here and when she matures and puts it all together she is going to be dangerous.



43

## SSF LADY 3102

Heifer | AAA 20397325 | Polled | 03.10.2022 | 3102

SSF ON POINT 4028

TOP LINE LADY 7139

COLBURN PRIMO 5153

PLUM CREEK ANNIE LU 4472

PVF INSIGHT 0129

TOP LINE LADY 4065

BEPD 3.5

WEPD 57

YEPD 99

MEPD 20

We still love our On Points and I feel he is certainly one of the young angus sires that is starting to separate from the group as a top sire of show cattle. This heifer exemplifies the soundness of structure that is making On Point a go to sire. This heifer's mother is a truly impressive beast, and her full sister is currently being campaigned successfully by Eva Hinrichsen.



44

## TOP LINE LADY 7003

Cow | AAA +18696906 | Polled | 01.06.2017 | 7003

DAMERON FIRST CLASS

GAMBLES LADY 959

EXG RS FIRST RATE S903 R3

DAMERON NORTHERN MISS 3114

FAMOUS 7001

CHAMPION HILL LADY 703

BEPD 5.1

WEPD 58

YEPD 95

MEPD 15

Bred to mc MC SSF Nightsky; due January 15, 2023.

When we bought this female she was the most expensive angus Cortney and I had ever bought at \$15,000. She paid for herself on her very first calf, and has also provided us with two outstanding daughters that we have put back into the herd. This cow has as much shear foot size, mass, and size as any cow on the farm. She has definitely done her job here and is still in her prime productive years. This cow will produce.



45

## SSF NELLIE LADY 4021

Heifer | AAA +20394326 | Polled | 04.02.2021 | 4021

CONLEY EXPRESS 7211

SSF NELLIE LADY 2104

SMA WATCHOUT 482

DPL SANDY 3040

S A V BRILLIANCE 8077

SCC ECHO DELL NELLIE 6005

BEPD 3.7

WEPD 57

YEPD 100

MEPD 23

Bred to Conley South Point Sexed Heifer Semen; due January 31, 2023.

This is a nice Express daughter out of one of our most impressive donor cows. The 2104 donor is as sound, easy fleshing, and heavy milking as any cow on the farm. Here is a chance to buy two females for the price of one at the same time to bolster your herd as she is bred to sexed heifer semen.





*Cortney*

# THE PROVEN QUEEN'S

46

## SSF PROVEN QUEEN 1022

Heifer | AAA +20397322 | Polled | 01.02.2022 | 1022

SCC SCH 24 KARAT 838

SCC TRADITION OF 24

FCF PROVEN QUEEN 419

DAMERON FIRST CLAS

P V F PROVEN QUEEN 602

BEPD	3.8
WEFD	49
YEPD	80
MEPD	20

DAMERON PROVEN QUEEN 333

We feel this female has a chance to be very special. This cow family has produced so many top sellers and winners for us, but imp I am not sure we have had one with this kind of big ring look. This incredible female has the unique extension and outline that 24 Karat is known for, with the power, dimension, and structure of 333. She has the size and dimension to compete as a calf.



SSF Proven Queen 5029, Division Champion, '21 Atlantic Nationals, '21 Cattlemen's Classic and '20 NWSS, NJAS and American Royal  
Shown by Sara Sullivan





**LOT 47A**



**LOT 47B**



**LOT 47C**

**47A**

### SSF PROVEN QUEEN 4102

Heifer | AAA +20397326 | Polled | 04.10.2022 | 4102

**47B**

### SSF PROVEN QUEEN 5182

Heifer | AAA +20397329 | Polled | 05.18.2022 | 5182

**47C**

### SSF PROVEN QUEEN 3241

Heifer | AAA +20096849 | Polled | 03.24.2021 | 3241

SILVEIRAS STYLE 9303

GAMBLES HOT ROD

BEPD 2.9

SILVEIRAS ELBA 2520

WEPD 44

DAMERON PROVEN QUEEN 333

DAMERON FIRST CLASS

YEPD 73

P V F PROVEN QUEEN 602

MEPD 14

LOT 47A - This has been for sure the most proven and consistent mating for us since we started selling Angus. Not only have these cattle out of this mating competed at the very highest level, but they have made tremendous cows with awesome udders as well.

LOT 47B - This female is not very old, but some of them just have it when they are born and you can tell they are going to be special; this heifer is that kind. I think a lot of people could land on this one as she is one that is of national caliber.

LOT 47C - Bred to Conley Turning Point; due March 8, 2023. Here is another very special bred female from this very proven mating. She possesses the balance and structural design known for this mating. The Conley Turning Point bull has been exceptional for us and is very calving ease.



SSF Proven Queen 3029, Grand Champion Female, '21 Indiana Preview Show, Shown by Skylar Bennet



SSF Proven Queen, Division Champion, '19 NAILE, Shown by Sara Sullivan



SSF Proven Queen 2258, many time Top Five Female and Champion Angus, Shown by Ralieghe Doerstler



48

**SSF PROVEN QUEEN 3161**

Heifer | AAA 20394323 | Polled | 03.16.2021 | 3161

S A V BISMARCK 5682	G A R GRID MAKER	BEPD
	S A V ABIGALE 0451	WEPD
SSF PROVEN QUEEN 3209	SMA WATCHOUT 482	YEPD
	DAMERON PROVEN QUEEN 333	MEPD

Bred to Conley South Point Sexed Heifer Semen; due January 29, 2023.

The best cows we have had in the Angus business are our Watchouts and our Bismarck's. Here is a Bismarck out of a Watchout and back to one of our top donors. We think she will be a model cow and is safe in calf with a heifer to a National Champion bull. Sounds like an all around winner.



49

**SSF PROVEN QUEEN 3031**

Heifer | AAA 20032206 | Polled | 03.03.2021 | 3031

W L E LEGIT B30	B C LOOKOUT 7024	BEPD
	TYRA'S MAY BABY 30U	WEPD
SSF PROVEN QUEEN 5029	SILVEIRAS STYLE 9303	YEPD
	DAMERON PROVEN QUEEN 333	MEPD

Bred to Conley Turning Point; due February 24, 2023.

This female is the first calf out of the May heifer of Sullivan's that was so successful. She was at her side when she won her division at Atlantic National as a pair. Piper named her Fern when she was in the show barn. I don't always understand her naming scheme but they usually stick. This is a good footed, sound female that should have an excellent udder, her mom sure does.



# THE SANDY'S

50A

**SSF SANDY 3022**

Cow | AAA +20397330 | Polled | 03.02.2022 | 3022

EXAR BLUE CHIP 1877B	DAMERON FIRST CLASS	BEPD 4.4
	GREENS PRINCESS 1012	WEPD 60
CONLEY S SIS SANDY 4313	SILVEIRAS STYLE 9303	YEPD 99
	KNC CABIN CREEK SANDY 804	MEPD 13

There is a lot of the good old stuff in this one's pedigree. Not only is this female an extremely striking, high quality show heifer prospect but she has the added frame fame and royal pedigree to make a cornerstone donor cow when mated to today's popular young sires.



50B

**SSF SANDY 1251**

Heifer | AAA +20394320 | Polled | 01.25.2021 | 1251

SSF ON POINT 4028	COLBURN PRIMO 5153	BEPD 4.0
	PLUM CREEK ANNIE LU 4472	WEPD 50
CONLEY S SIS SANDY 4313	SILVEIRAS STYLE 9303	YEPD 88
	KNC CABIN CREEK SANDY 804	MEPD 15

Bred to PVF Surveillance Sexed Heifer Semen; due February 15, 2023.

We knew it would take time but we are very happy with the market we have developed for our bred heifers. My Grandpa always said the two ways you stay in business for generations is repeat customers and customer service. We have had so many success stories from our breds that it really makes it fun. This exotic looking Sandy bred heifer should be one of the more sought after and but could have a Surveillance heifer calf that could well exceed what she brings in this sale.





# THE BLACKBIRD'S

51

## SSF ENVOIOUS BLACKBIRD 5022

Heifer | AAA +20397332 | Polled | 05.02.2022 | 5022

COLBURN PRIMO 5153	DAMERON FIRST CLASS	BEPD 4.0
	SILVEIRAS SARAS DREAM 1339	WEPD 63
EXAR ENVOIOUS BLACKBIRD 5983	PVF INSIGHT 0129	YEPD 103
	EXAR ENVOIOUS BLACKBIRD 1760	MEPD 15

This is easily the stoutest, hairiest Angus we have ever had born here. She has been impressive since day one and never looked back. I have criticized a lot of bad recipis in my footnotes over the years, but recip tag 608 is going to get a shout out for doing a really great job here. This one has a chance to do a lot of winning at both jack-pots as well as the national level.



TOPLINE  
SENSATIONAL



CONLEY TURNING POINT

SSF ON POINT



SMA WATCHOUT 482



MC SSF NIGHT SKY



CONLEY SOUTH POINT

# SERVICE SIRES



**52A**

## SSF BLACKBIRD 2201

Heifer | AAA 20394321 | Polled | 02.20.2021 | 2201

SSF ON POINT 4028	COLBURN PRIMO 5153	BEPD 3.6
	PLUM CREEK ANNIE LU 4472	WEPD 47
	PVF NEW HORIZON 001	YEPD 86
SSF BLACKBIRD HORIZON 3254	S C C ROYAL BLACKBIRD 502	MEPD 22

Bred to Conley Turning Point; due March 10, 2023.

This is a really long extended, attractive female that is sound and should have great feet, as both her dam and sire sure did.


**52B**

## SSF BLACKBIRD 3221

Heifer | AAA +20394325 | Polled | 03.22.2021 | 3221

CONLEY EXPRESS 7211	SMA WATCHOUT 482	BEPD 3.5
	DPL SANDY 3040	WEPD 53
	PVF NEW HORIZON 001	YEPD 93
SSF BLACKBIRD HORIZON 3254	S C C ROYAL BLACKBIRD 502	MEPD 22

Bred to WLE Legit; due February 17, 2023.

Here is another very attractive profiling, well balanced female that is good in terms of feet and leg design. Her mating to Legit should definitely produce on with a show ring look.


**52C**

## SSF BLACKBIRD 4121

Cow | AAA +20397330 | Polled | 03.02.2022 | 3022

COLBURN PRIMO 5153	DAMERON FIRST CLASS	BEPD 3.2
	SILVEIRAS SARAS DREAM 1339	WEPD 49
	PVF INSIGHT 0129	YEPD 86
SSF BLACKBIRD HORIZON 3254	S C C ROYAL BLACKBIRD 502	MEPD 19

Bred to Conley South Point Sexed Heifer Semen; due January 31, 2023.

This is a full sister to the Blackbird heifer that was shown so successfully by the Marcus Van Vorhis. I feel this is another great opportunity to get a female of extreme quality that is carrying a heifer calf that could more than pay for. Buying two high quality females for the price of one kind of makes since sense to me.





# THE BLACKCAP'S



**53A**

## SSF BLACKCAP 2082

Heifer | AAA 20397324 | Polled | 02.08.2022 | 2082

SSF ON POINT 4028	COLBURN PRIMO 5153	BEPD 2.9
	PLUM CREEK ANNIE LU 4472	WEPD 51
	S A V BISMARCK 5682	YEPD 84
SSF BISMARCK STRUCTURE 5220	SSF BLACKCAP STRUCTURE 4188	MEPD 22

This is a really good female that covers all the bases. Her dam was our original donor cow here at SSF, and has produced for 10 years at the top of our herd. Marcus Van Vorhis showed a primo by 5220 that was Reserve Grand female at the All-American Angus Futurity. A full sister in blood to this female was sold by Smith Family Farms, Jester Farms, and Nikkle Bros to the Denton family in Kansas and was a reserve division winner at Junior Nationals. This heifer is very solid and one of the best.



**53B**

## SSF BLACKCAP 4171

Heifer | AAA +20394330 | Polled | 04.17.2021 | 4171

COLBURN PRIMO 5153	DAMERON FIRST CLASS	BEPD 2.6
	SILVEIRAS SARAS DREAM 1339	WEPD 54
	S A V BISMARCK 5682	YEPD 83
SSF BISMARCK STRUCTURE 5220	SSF BLACKCAP STRUCTURE 4188	MEPD 18

Bred to Bismarck; due January 30, 2023.

This is one of the best built breds in the sale. We take just as much pride in our bred heifer offering as we do our show heifers. This one could have been shown but we were so heavy on Aprils last year and try to only sell a dozen show heifers so that we can maintain this kind of quality in our breds.

# THE SARAS DREAM'S



**54**

## SSF SARAS DREAM 4142

Heifer | AAA +20397327 | Polled | 04.14.2022 | 4142

SCC SCH 24 KARAT 838	SCC TRADITION OF 24	BEPD 4.0
	FCF PROVEN QUEEN 419	WEPD 63
	DAMERON FIRST CLASS	YEPD 103
SILVEIRAS HARAS DREAM 8532	SILVEIRAS SARAS DREAM 1339	MEPD 15

There is no doubt that the Sara's Dream Cow family has been one of the most dominate in the Angus show cattle arena. Here is a 24 Karat out of a full sister to Primo. She is square built, moderate, and sound.



55

## SSF EMBLYNETTE 1127

Heifer | AAA +19166267 | Polled | 01.12.2017 | 1127

SAC CONVERSATION	SILVEIRAS CONVERSION 8064	BEPD 1.4
	LAFILINS FARRAH 0252	WEPD 45
	S A V 8180 TRAVELER 004	YEPD 77
CHAMPION HILL EMBLYNETTE 6372	S A V DMBLYNETTE 7319	MEPD 25

Bred to MC SSF Nightsky; due January 13, 2023.

Cody Sankey brought this females mother over to get a donor picture taken and I liked her well enough that we purchased a set of eggs out of her. This Conversation was a standout yearling, a standout two-year-old and has been a rock-solid producer here as evidenced by her amazing bred in the sale. She produced another of my top bred in a past sale and my top bull calf two years ago. There is no reason to think this female is going to stop producing at a very high level. We are excited to see what the Nightsky bull can do.



55A

## SSF EMBLYNETTE 2211

Heifer | AAA 20394322 | Polled | 02.21.2021 | 2211

SCC SCH 24 KARAT 838	SCC TRADITION OF 24	BEPD -
	FCF PROVEN QUEEN 419	WEPD -
	SAC CONVERSATION	YEPD -
SSF EMBLYNETTE 1127	CHAMPION HILL EMBLYNETTE 6372	MEPD -

Bred to PVF Surveillance Sexed Heifer Semen; due February 14, 2023.

This female has certainly been a standout and a powerhouse since birth. Had it not been for her tail being stepped on as a calf she most certainly would have been sold as a show prospect in last fall's sale. This female has herd changing muscle shape and power. She is carrying a Surveillance heifer calf that could very well change your herd.



# THE GEORGINA'S

56

## SSF GEORGINA 4258

Cow | AAA +19167108 | Polled | 04.25.2018 | 4258

SMA WATCHOUT 482	SILVEIRAS WATCHOUT 0514	BEPD 2.5
	2K BEAUTY 961	WEPD 61
	S A V BISMARCK 5682	YEPD 101
CHAMPION HILL GEORGINA 6518	CHAMPION HILL GEORGINA 2121	MEPD 21

Bred to MC SSF Nightsky; due December 30, 2022.

We try and include young donor quality females each year that are just reaching their prime producing years. When trying to create a successful sale that people want to attend and purchase cattle in you have to make tough decisions and ask yourself what kind of opportunities would it take for me to make an investment in this sale, and this is it. This female is a Watchout out of the 6518 Georgina donor. She was shown successfully by Sara Sullivan winning her class in Denver and FT Worth as a calf. She has great feet and a tremendous udder. She is as striking and attractive as she was as a heifer calf. I think this is a tremendous opportunity and matches up very well to Nightsky phenotypically.





# THE BARDOT'S



57

## SSF BARDOT 4141

Heifer | AAA 20394328 | Polled | 04.14.2021 | 4141

SSF ON POINT 4028	COLBURN PRIMO 5153	BEPD 4.5
	PLUM CREEK ANNIE LU 4472	WEPD 56
	EXAT CLASSEN 1422B	YEPD 97
SELDOM REST BARDOT 5020		MEPD 15
	SELDOM REST B F B ARDOT 9051	

Bred to PVF Insight Sexed Heifer Semen; due January 30, 2023.

We have had numerous breds that have paid for themselves with their first calf. That is your goal as a seller is for the customer to achieve success that exceeds their investment. This one here will have an excellent chance to do just that. This female is a perfect structured on point daughter out of the Bardot cow that produced Jake Nikkels third overall champion at the NJAS. The Her heifer calf by Insight she is carrying is certainly one bred for greatness.

# THE ELSA'S



58

## SSF ELSA 4161

Heifer | AAA 20394329 | Polled | 04.16.2021 | 4161

SSF ON POINT 4028	COLBURN PRIMO 5153	BEPD 2.6
	PLUM CREEK ANNIE LU 4472	WEPD 54
DAMERON ELSA 7192	DAMERON BEST IN CLASS	YEPD 83
	DAMERON ELSA 4117	MEPD 18

Bred to Conley South Point Sexed Heifer Semen; due February 1, 2023.

We have tried to incorporate as many of the Angus breeds top cow families into our herd as we can. I loved the Cherry Knoll Elsa female that the Stabler Family showed. A great deal of the cow families we have are because of specific females I was drawn to in the show ring. This female is very well-bred a and will have a heifer calf out of a National Champion Angus bull five months after you own her.

# THE BARBARA'S



59

## SSF BARBARA 4081

Heifer | AAA 20398536 | Polled | 04.08.2021 | 4081

SMA WATCHOUT 482	SILVEIRAS WATCHOUT 0514	BEPD 4.0
	2K BEAUTY 961	WEPD 63
DDBA BARBARA 1639	DDA DAMERON NORTHERN LIGHT	YEPD 107
	DDA BARBARA 1027	MEPD 21

Bred to Bismarck; due January 30, 2023.

Here is another cow family that has been so successful for the Anderson Family. I always really liked the Barbara female that was shown by the Schafer family of Illinois that was Reserve at the Junior Nationals in Indiana. We absolutely love our Watchout daughters as they are our best momma cows. This females mother is a powerhouse of a cow with a magnificent udder. Her mating to Bismarck just takes the ultimate maternal abilities of this female to the next level.



# THE SEMEN

## SSF ON POINT 4028

Bull | AAA +\*19272390 | Polled | 04.02.2018 | 4028

COLBURN PRIMO 5153	DAMERON FIRST CLASS	BEPD 4.4
	SILVEIRAS SARAS DREAM 1339	WEPD 52
	GAMBLES HOT ROD	YEPD 93
PLUM CREEK ANNIE LU 4472	S H MISS ANNIE LU 6087	MEPD 16

SSF On Point is deceased and his semen is not on the open market!

**LOT 60A** - Selling one package of 2 units of SEXED HEIFER on SSF On Point 4028 semen.

**LOT 60B** - Selling one package of 2 units of SEXED HEIFER on SSF On Point 4028 semen.

**LOT 60C** - Selling one package of 2 units of SEXED HEIFER on SSF On Point 4028 semen.

**LOT 61A** - Selling one package of 3 units of Conventioanl SSF On Point 4028 semen.

**LOT 61B** - Selling one package of 3 units of Conventioanl SSF On Point 4028 semen.

**LOT 61C** - Selling one package of 3 units of Conventioanl SSF On Point 4028 semen.



## GENERAL INFORMATION

**Feeding & Showing Terms:** We pride ourselves in the professional way we exhibit your purchases. Here, at Cates Farms, we employ some of the best fitters in the business at both the farm and the shows. We spare no expenses to exhibit your cattle to ensure your success. The charges below are not designed for us to make money, rather to insure we can continue to offer the best service to you. Each animal that will be located at Cates Farms show barn will be charged \$25/day. Each animal will be charged \$250/day while attending shows with Cates Farms crew. This will cover all expenses while at shows. All animals must be insured while in our care/possession. Any veterinary expense above routine will be owners obligation. All accounts will be billed monthly. **Breeding Update/Calving Information:** There will be added information available at the sale site that will list any additions to the catalog information as to new calves born and new breeding information that will occur after the printing of this catalog. **1/2 Interest Females:** The owner will own 100% of the animal. Cates Farms will get 1/2 of the embryos from each flush. Semen on all of our bulls will be available. Cost will be split. **Breeding Guarantee:** All cattle sell under the Standard Breeding Guarantee recommended by the American Shorthorn Association. An exception would be through mishandling either obesity or under nourishment and illegal practices associated with showing the female. **Registration & Transfer:** All animals sell with completed pedigrees or applications for registration. **Location:** The sale will be held at the farm which is located one mile east of Modoc on Route 36, on the north side of the road. **Air Travel:** There are commercial flights to Indianapolis, Indiana, and Dayton Ohio. There are private paved strips at New Castle and Winchester, Indiana. **Terms:** The terms of the sale are cash or check payable to Cagwin Cattle Services, Inc. Payment to be made to the clerk immediately following the sale and before the cattle are removed from Cates Farms. Purchasers or their representative must sign the bill of sale prior to leaving the sale site. **Billed Accounts:** All billed

accounts are due and expected within 10 days of the sale date. **Insurance** will be available for your purchase at the sale through Harding & Harding. Contact either their representative or the clerk at the settlement desk. **Health:** Each animal will be represented by a state approved health certificate for interstate shipment. Buyers should make themselves aware of the health requirements for their respective states. All vaccinations are up-to-date and cattle born at Cates Farms have been vaccinated. A list will be available on sale day listing any non-vaccinations. **Announcements** made sale day will take precedence over printed material in this catalog. **Genetic Conditions:** We apologize that the results for all genetic conditions are not done at the time of the catalog. We at Cates Farms feel it is very important to have all carriers identified we also believe cattle with these genetic conditions are still as valuable and useful as before. It is up to us as breeders to simply be responsible when mating them. Complete results on all genetic conditions should be done by sale day and will be provided to you on an added sheet. **Liability:** Each animal will be at the buyer's risk as soon as sold, but will be cared for by the sellers for a reasonable amount of time. Neither the owners, employees, auctioneer, sale manager or other affiliated personnel can be responsible for any accidents, but they will make every effort to provide for the safety and comfort of those attending. **Transportation:** The Cates Families will make every effort to assist you in your transportation needs. Local trucking will be available. **Mail Bids:** Mailed or telephoned bids will be handled in a most confidential manner. If you are unable to attend the sale personally, simply contact a representative of Cagwin Cattle Services, Inc., a special representative, a sale consultant or a member of the Cates Farms firm far enough in advance prior to sale day. They will be able to assist you at ringside on sale day.



*Shorthorn Country*  
7607 NW Prairie View Rd  
Platte Woods, MO 64151-1544

**FIRST CLASS  
PRE-SORTED  
PAID**

Montezuma, Iowa  
Permit No. 30



# STAR *search* XX

**SATURDAY, SEPTEMBER 3, 2022**

AT THE FARM, MODOC, INDIANA

